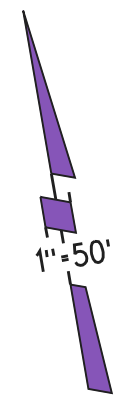
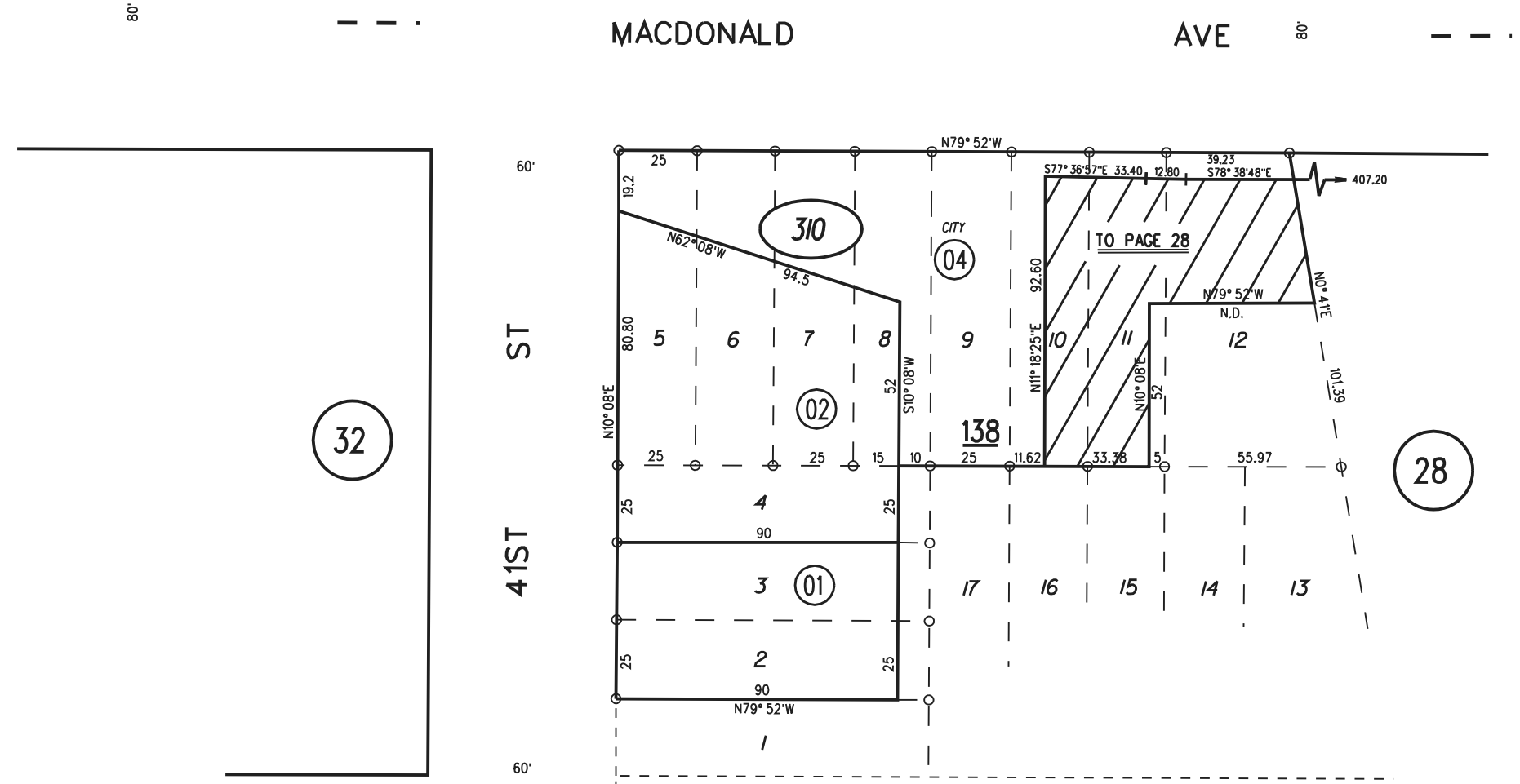
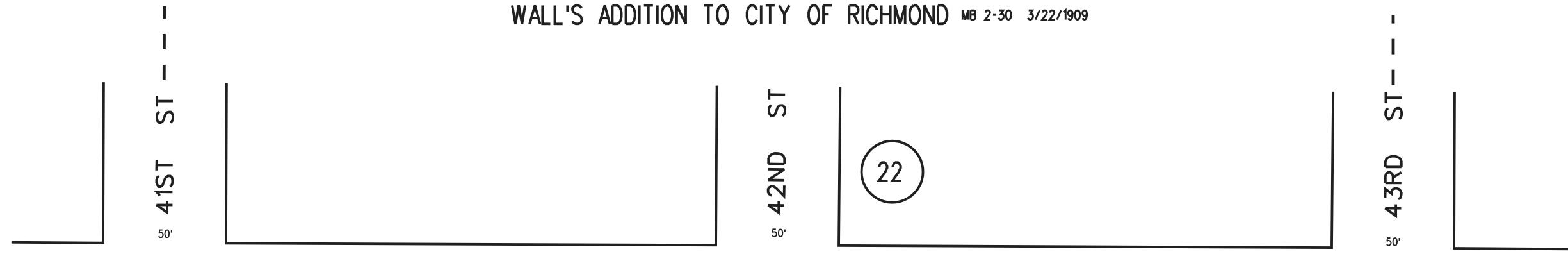


WALL'S ADDITION TO CITY OF RICHMOND MB 2-30 3/22/1909



NOTE: THIS MAP WAS PREPARED FOR ASSESSMENT PURPOSES ONLY. NO LIABILITY IS ASSUMED FOR THE ACCURACY OF THE INFORMATION DELINEATED HEREON. ASSESSOR'S PARCELS MAY NOT COMPLY WITH LOCAL LOT SPLIT OR BUILDING SITE ORDINANCES.

28

VACATED Pd.1  
61102 11-7-58

(BISSELL AVE)

310 04  
4/22/08