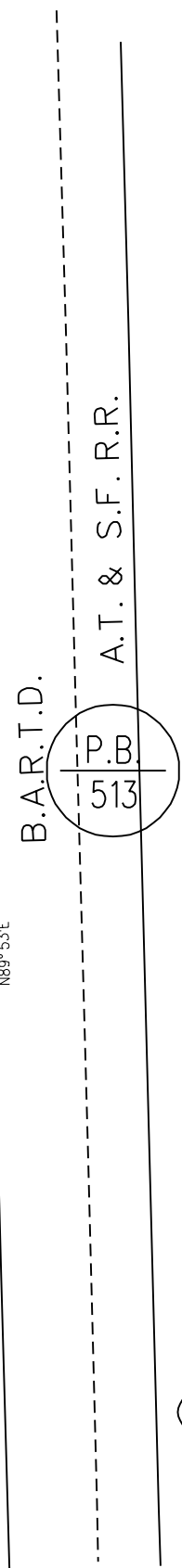
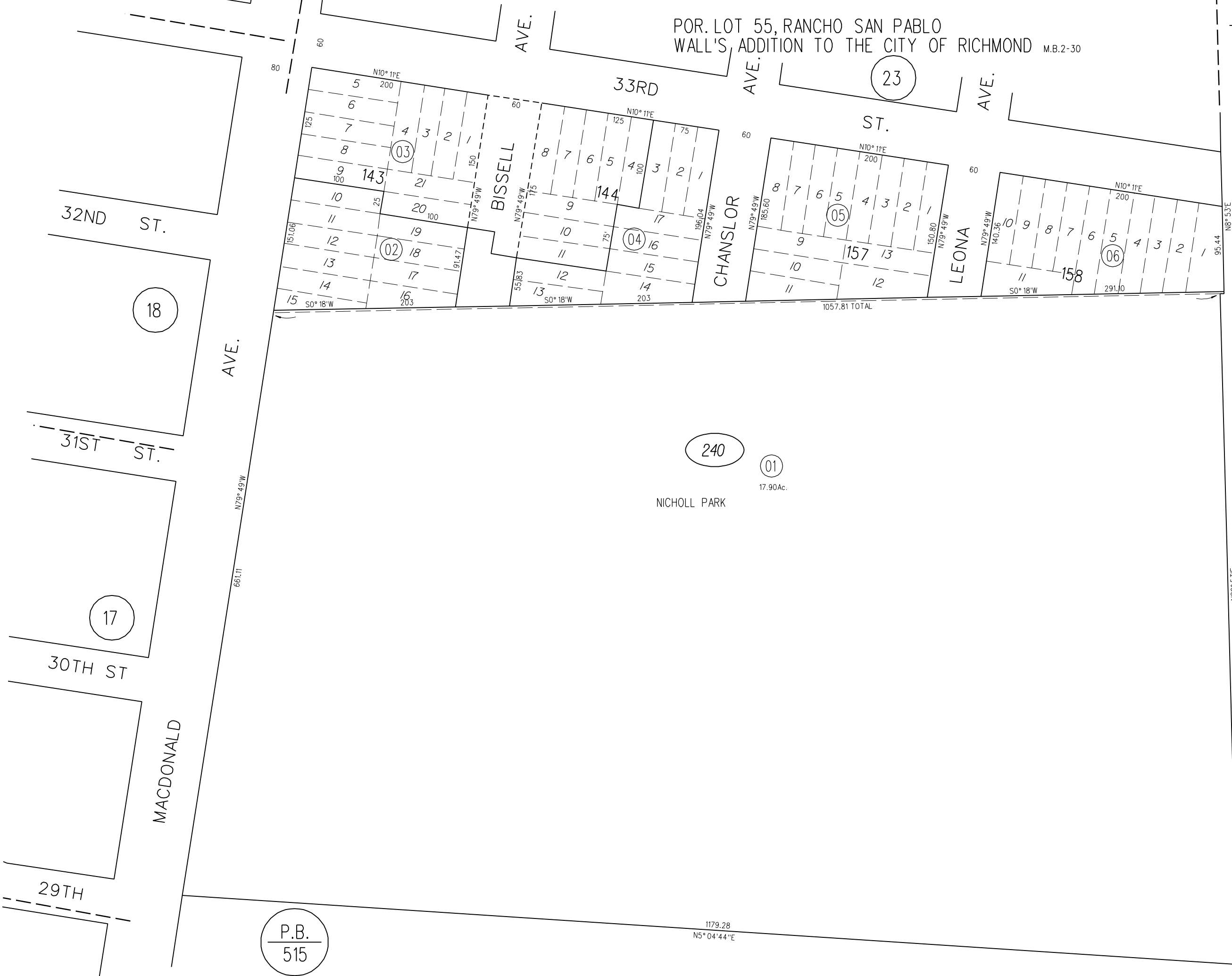


POR. LOT 55, RANCHO SAN PABLO
WALL'S ADDITION TO THE CITY OF RICHMOND M.B.2-30

TAX CODE AREA



1962 ROLL
FM144/6-7-15-80
ASSESSOR'S MAP
8-24-59 G.C.C. BOOK 516 PAGE 24
CONTRA COSTA COUNTY, CALIF.

P.B.
515

1179.28
N5° 04' 44" E