

A- NICHOLS MACDONALD AVE. CIVIC CENTER M.B. 8-190
B- RICHMOND CENTER M.B. 4-87
C- RICHMOND CENTER ADDITION M.B. 5-118

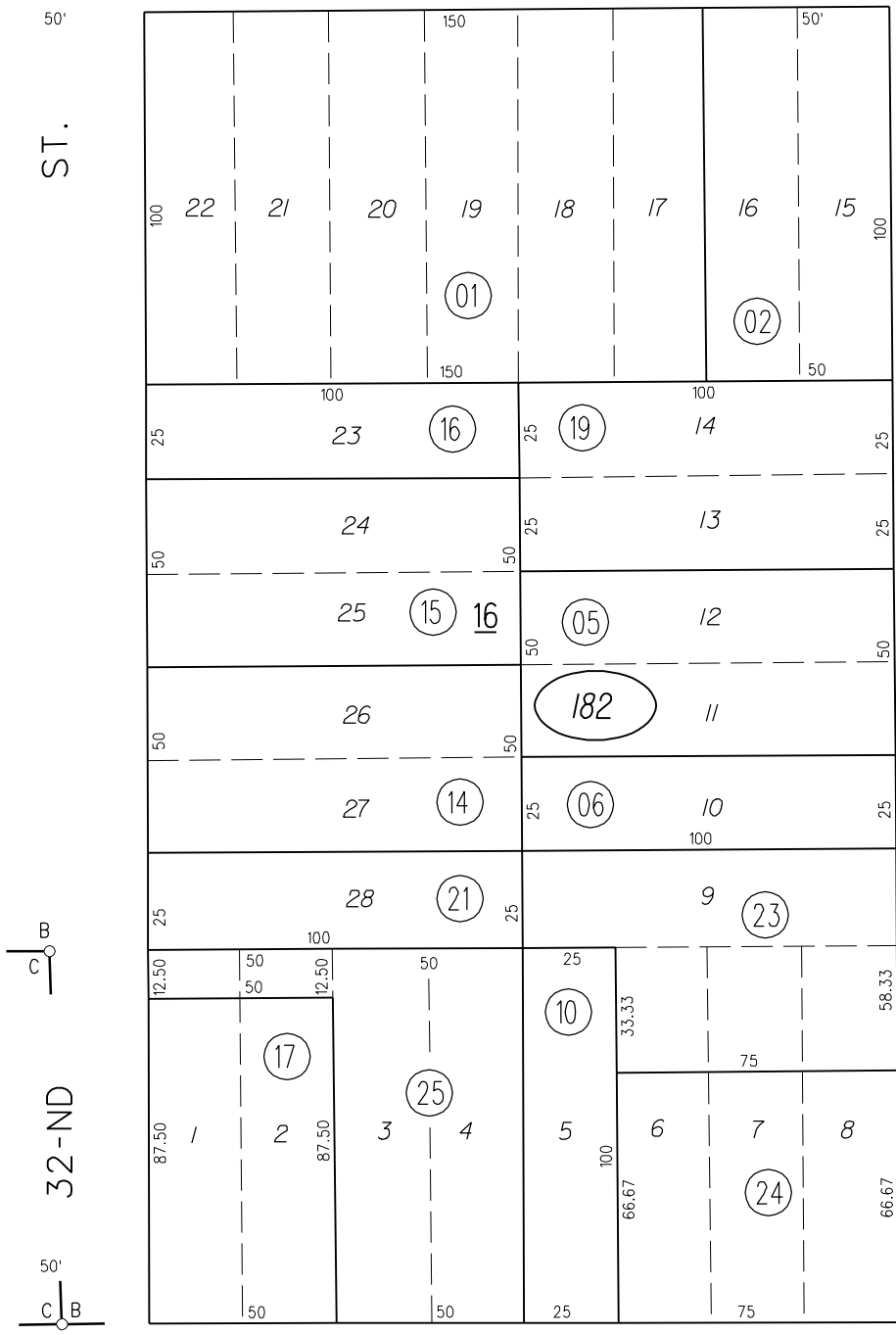
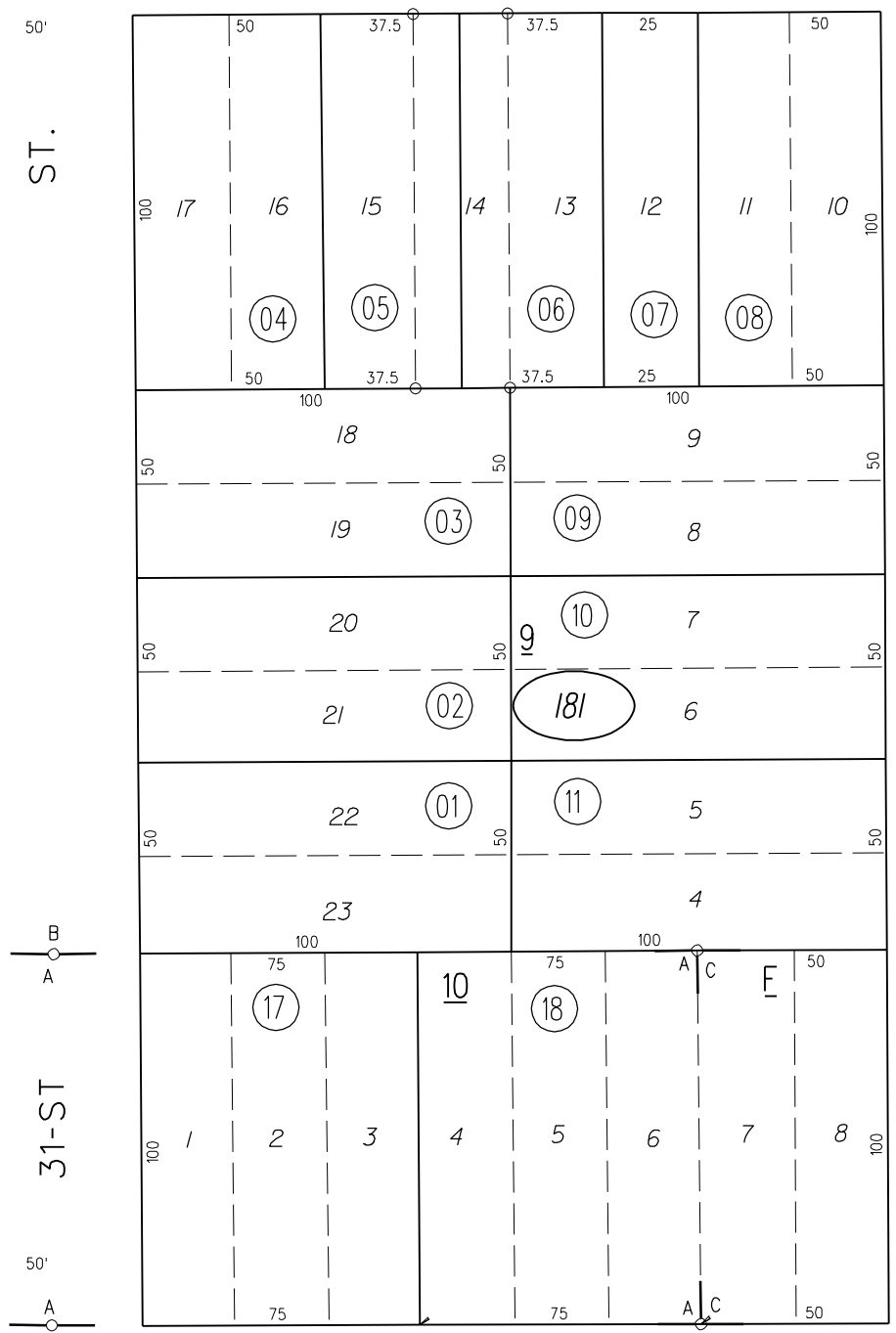
14

13

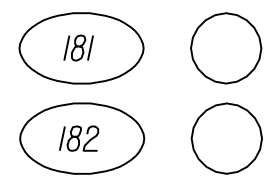
NEVIN

AVENUE

17



19



NOTE: THIS MAP WAS PREPARED FOR ASSESSMENT PURPOSES ONLY. NO LIABILITY IS ASSUMED FOR THE ACCURACY OF THE INFORMATION DELINEATED HEREON. ASSESSOR'S PARCELS MAY NOT COMPLY WITH LOCAL LOT SPLIT OR BUILDING SITE ORDINANCES.

MACDONALD

24

AVENUE