

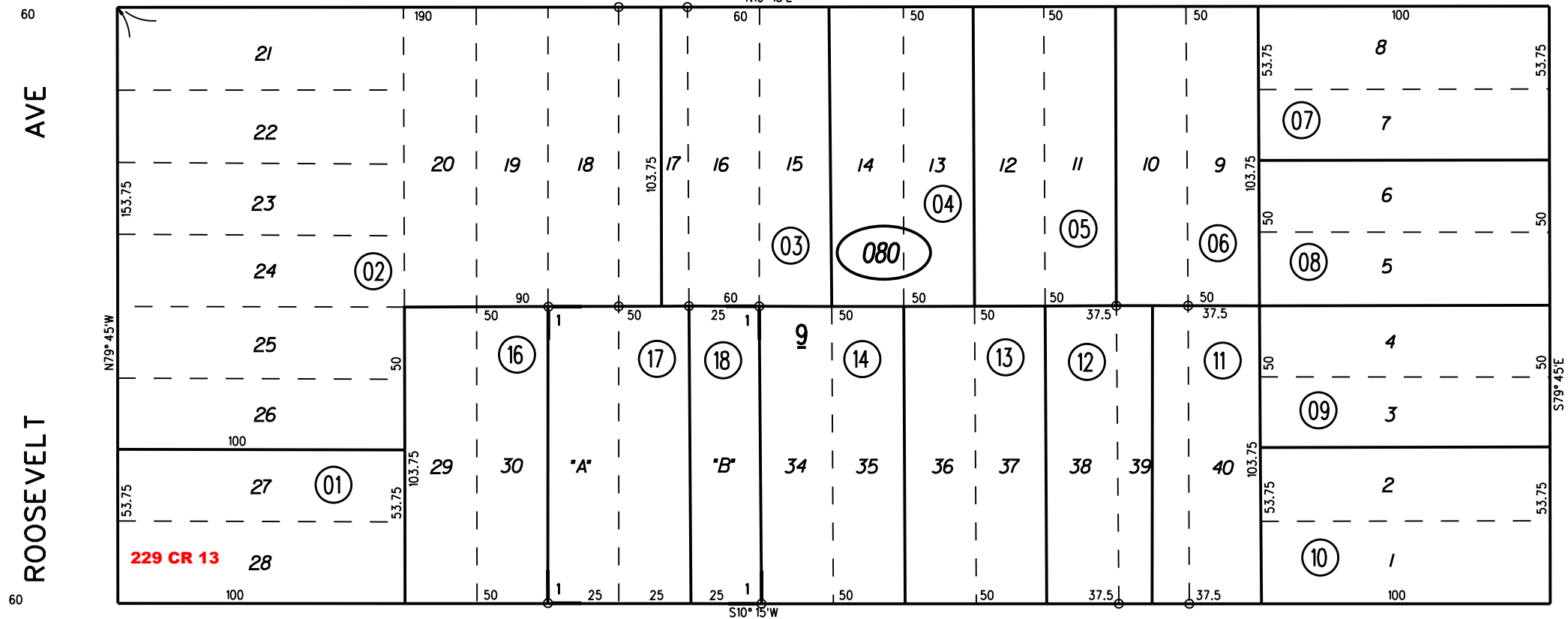
RICHMOND-PULLMAN HOME TRACT M.B. 3-72

1- 216PM11 5-20-20

P.B.
517

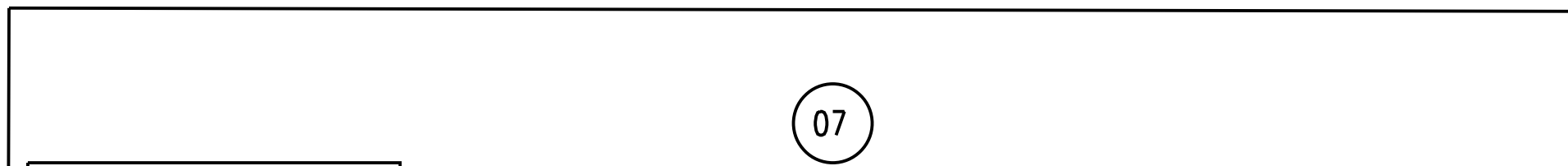


80 37-TH ST 80



P.B.
518

60 36-TH ST 60



NOTE: THIS MAP WAS PREPARED FOR ASSESSMENT PURPOSES ONLY. NO LIABILITY IS ASSUMED FOR THE ACCURACY OF THE INFORMATION DELINEATED HEREON. ASSESSOR'S PARCELS MAY NOT COMPLY WITH LOCAL LOT SPLIT OR BUILDING SITE ORDINANCES.

080

216
PM11
6/2/20

1962 ROLL

ASSESSOR'S MAP
BOOK 516 PAGE 08

FM. 141-86 CONTRA COSTA COUNTY, CALIF.