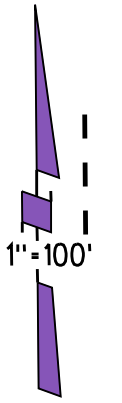


1"=100'



P.B.
540

PORTOLA AVE

05

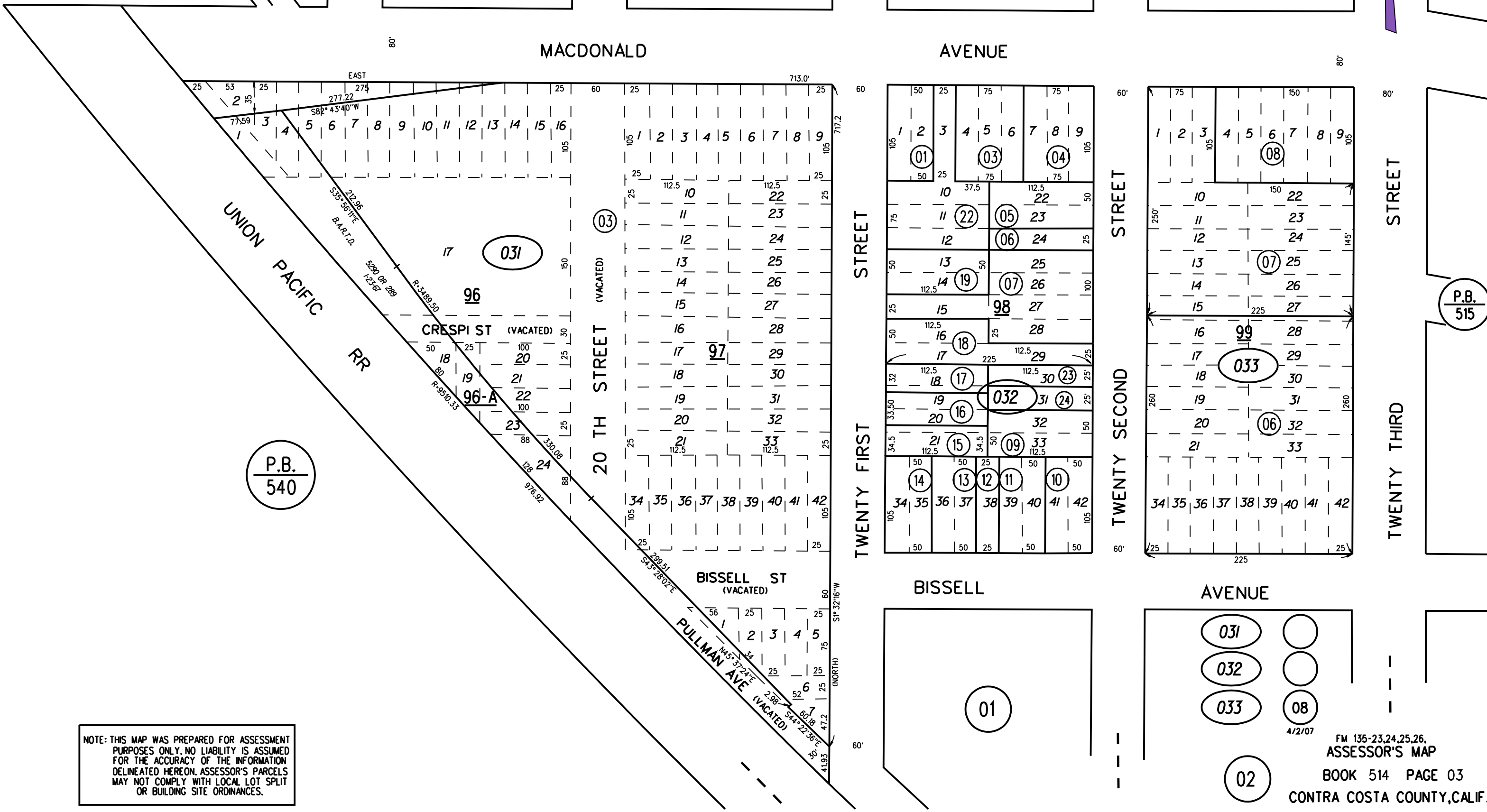
06

07

08

09

MACDONALD AVENUE



UNION PACIFIC RR

P.B.
540

NOTE: THIS MAP WAS PREPARED FOR ASSESSMENT PURPOSES ONLY. NO LIABILITY IS ASSUMED FOR THE ACCURACY OF THE INFORMATION DELINEATED HEREON. ASSESSOR'S PARCELS MAY NOT COMPLY WITH LOCAL LOT SPLIT OR BUILDING SITE ORDINANCES.

P.B.
515

STREET

TWENTY THIRD STREET

STREET

TWENTY FIRST STREET

STREET

TWENTY SECOND STREET

BISSELL AVENUE

BISSELL AVENUE

01

031

032

033

02

08

08

08

4/2/07

FM 135-23,24,25,26, ASSESSOR'S MAP BOOK 514 PAGE 03 CONTRA COSTA COUNTY,CALIF.