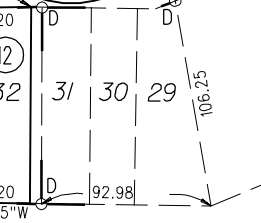
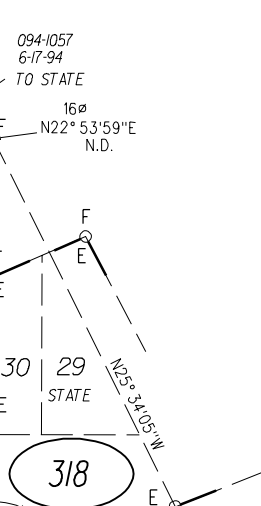
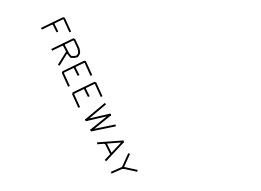
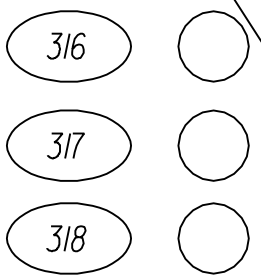
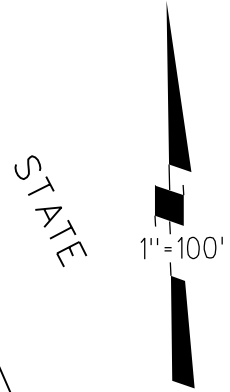
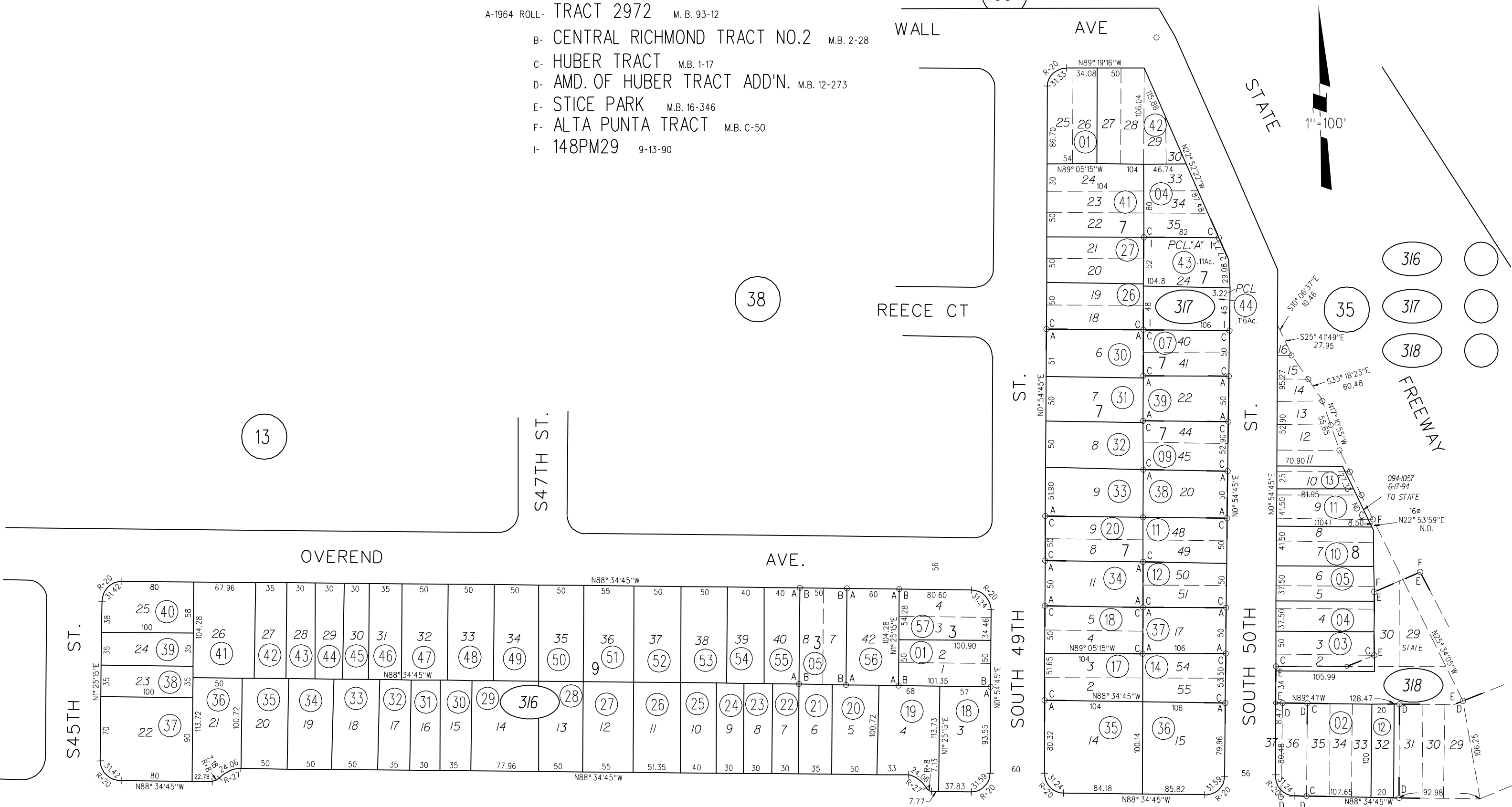


- A-1964 ROLL- TRACT 2972 M.B. 93-12
- B- CENTRAL RICHMOND TRACT NO.2 M.B. 2-28
- C- HUBER TRACT M.B. 1-17
- D- AMD. OF HUBER TRACT ADD'N. M.B. 12-273
- E- STICE PARK M.B. 16-346
- F- ALTA PUNTA TRACT M.B. C-50
- I- 148PM29 9-13-90

(33)



NOTE: THIS MAP WAS PREPARED FOR ASSESSMENT PURPOSES ONLY. NO LIABILITY IS ASSUMED FOR THE ACCURACY OF THE INFORMATION DELINEATED HEREON. ASSESSOR'S PARCELS MAY NOT COMPLY WITH LOCAL LOT SPLIT OR BUILDING SITE ORDINANCES.

S47TH

(29)

(23)