

RICHMOND ANNEX
POR. RANCHO SAN PABLO

M.B. 6-144

SANTA CLARA AVE.

10

SANTA CLARA ST.

ST.

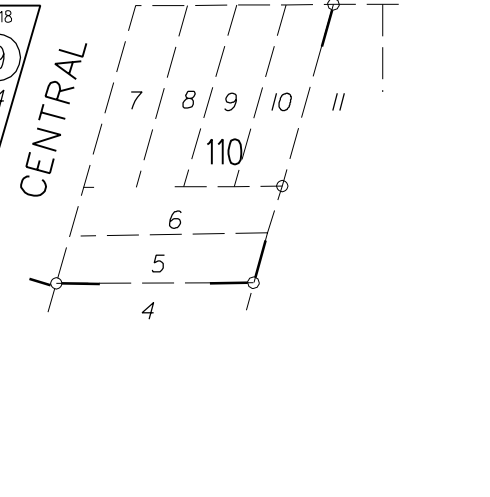
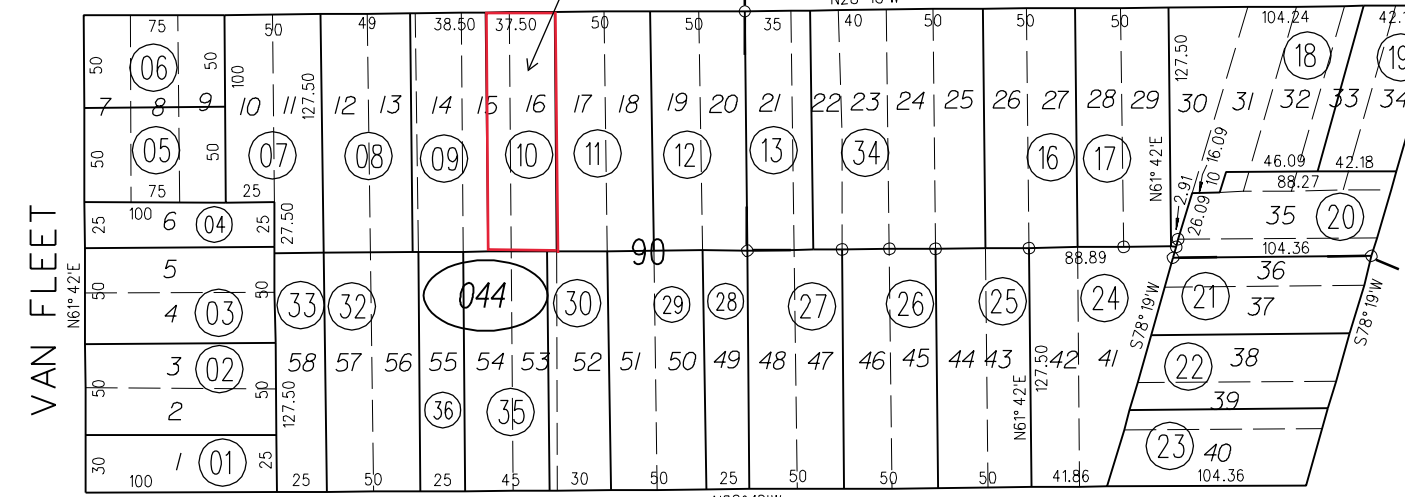
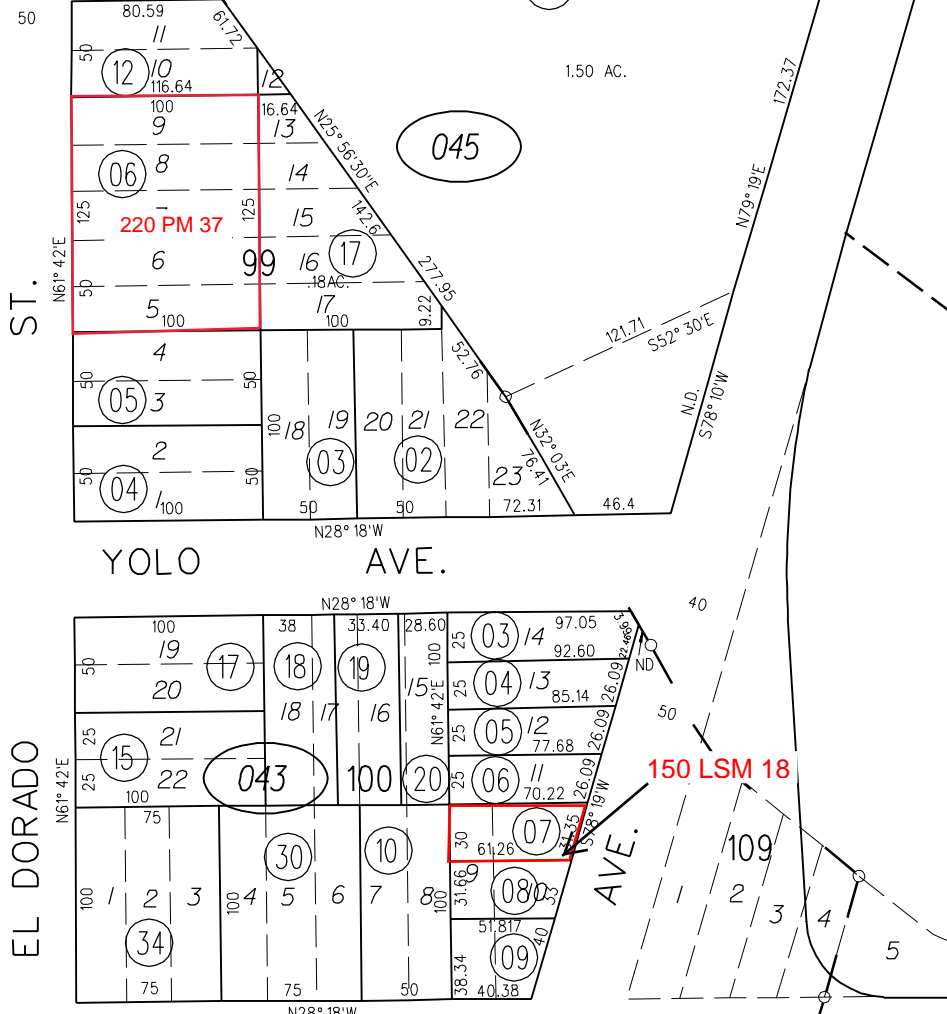
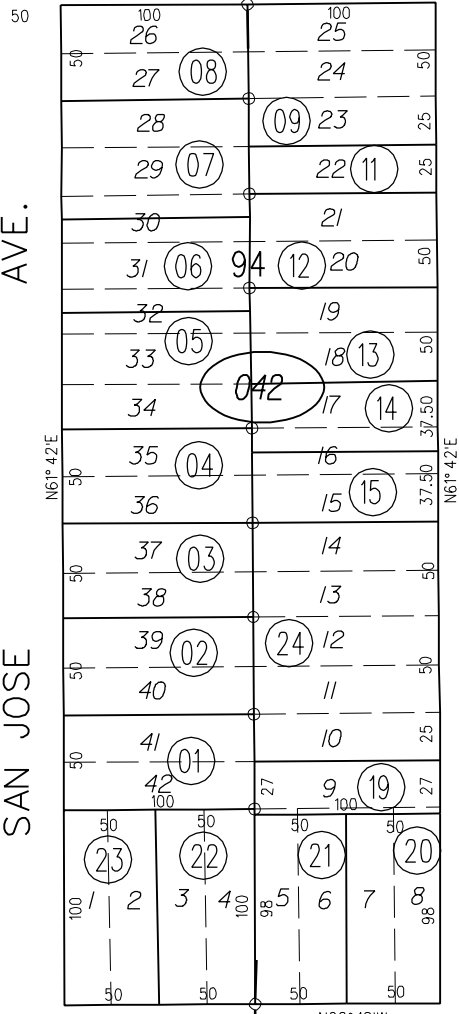
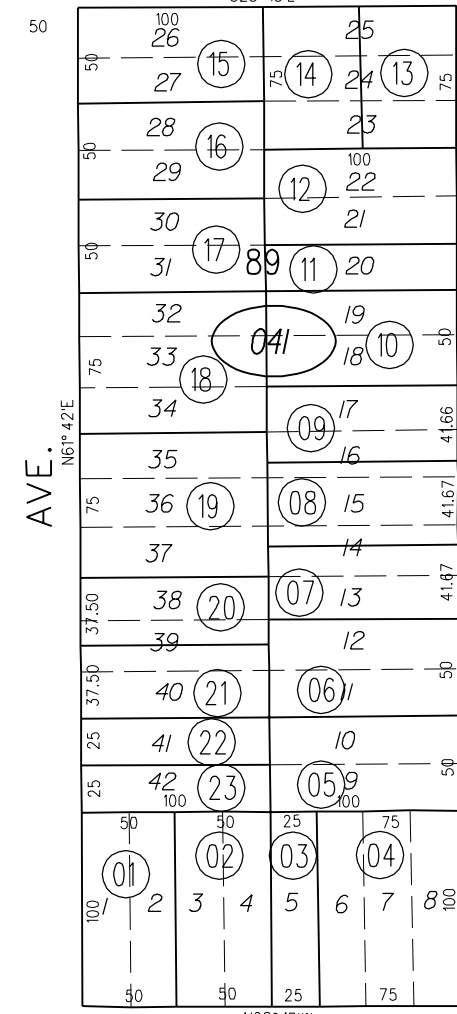
(AVE.)

YOLO AVE.

SAN MATEO ST.

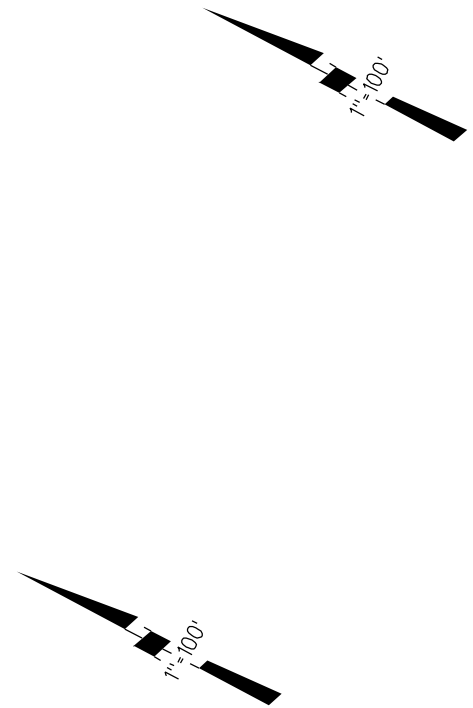
(AVE.)

SAN LUIS ST.



NOTE: THIS MAP WAS PREPARED FOR ASSESSMENT PURPOSES ONLY. NO LIABILITY IS ASSUMED FOR THE ACCURACY OF THE INFORMATION DELINEATED HEREON. ASSESSOR'S PARCELS MAY NOT COMPLY WITH LOCAL LOT SPLIT OR BUILDING SITE ORDINANCES.

- 041
- 042
- 043
- 044
- 045



FM.70/37,38 & 150/35,36,40

ASSESSOR'S MAP

BOOK 510 PAGE 04

12-9-59 G.C.C. CONTRA COSTA COUNTY, CALIF.