

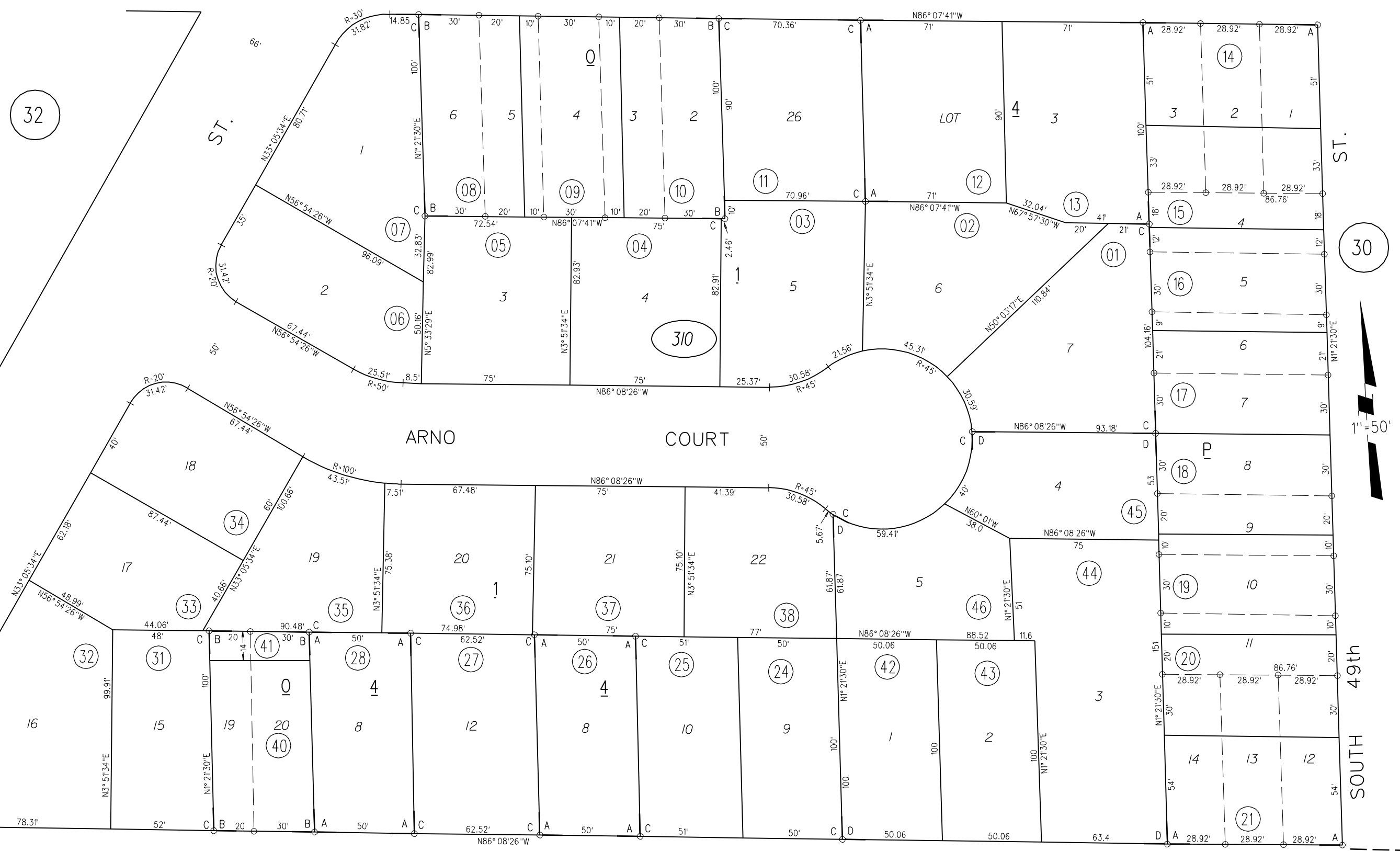
A - TOWN OF STEGE M.B. E-98
B - EAST SHORE PARK M.B. 3-58
C - TRACT 2638 M.B. 83.5-20
1972 ROLL D - TRACT 3980 M.B. 141-19

TAX CODE AREA

PB
513

POTRERO

AVE.



32

30

28

310

1962 ROLL
ASSESSOR'S MAP
BOOK 509 PAGE 31
CONTRA COSTA COUNTY, CALIF.

146/54.57, por. 146/55