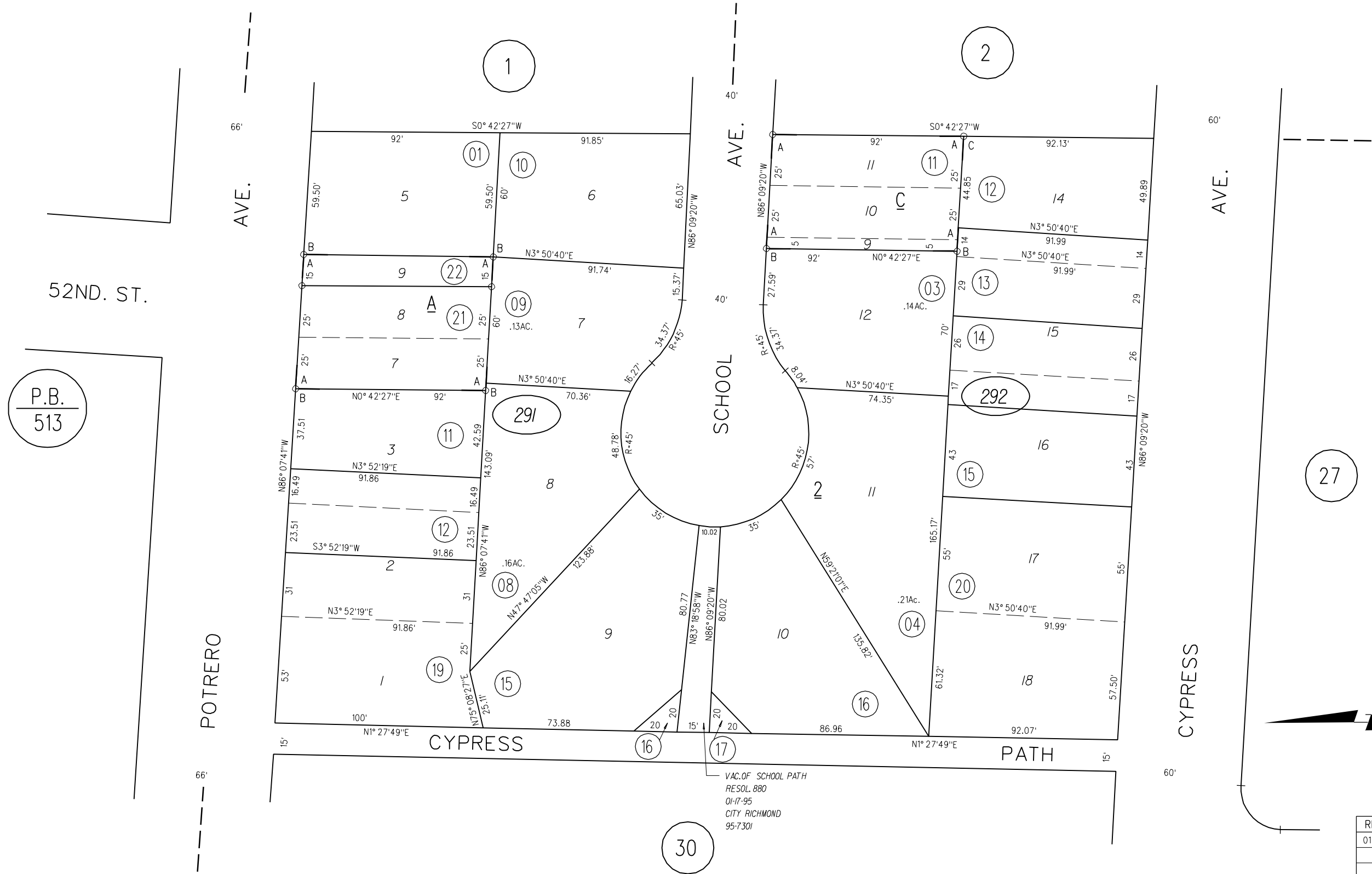


A- FIRST ADDITION TO BAY VIEW PARK M.B. E-102

B- TRACT 2638 M.B. 83.5-20



VAC. OF SCHOOL PATH
RESOL. 880
01-17-95
CITY RICHMOND
95-7301

REVISED	CHANGE	BY
01-17-95	VAC. SCHOOL PAT.	MJ

291 ○ 292 ○