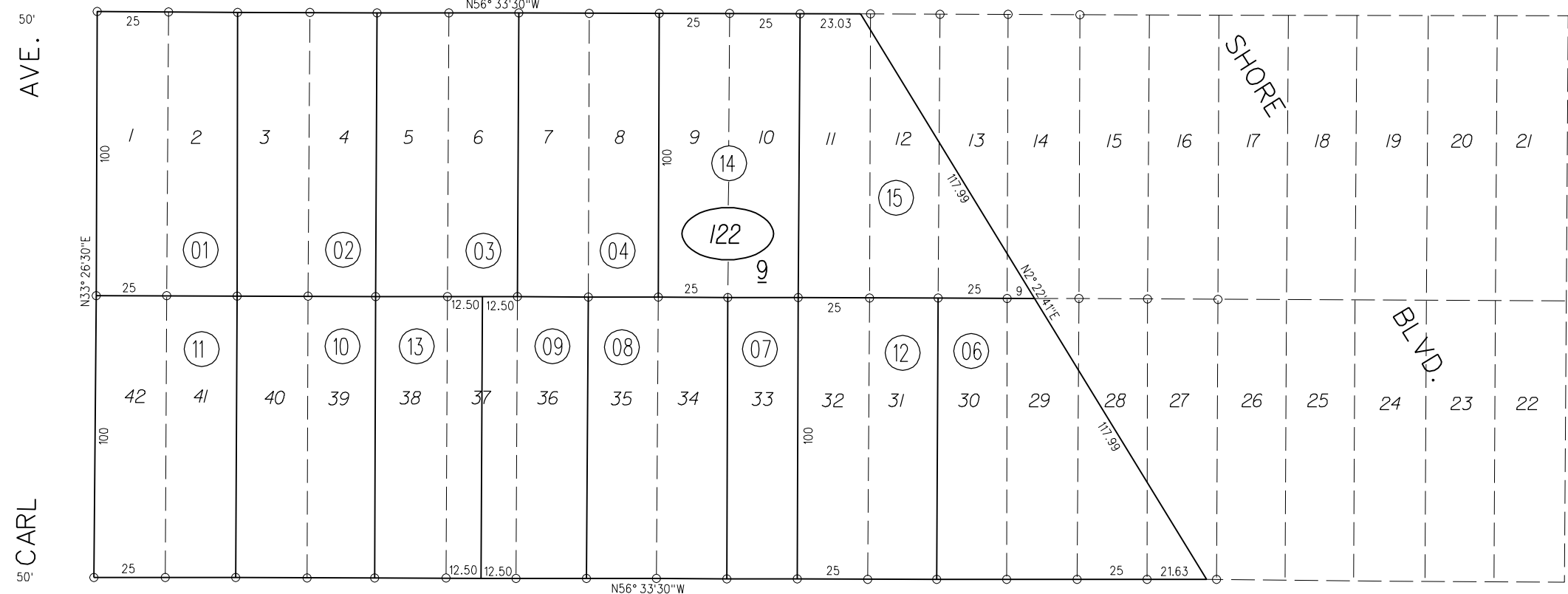


50' SANTA CLARA ST.



(IMPERIAL AVE.)

24

50' CARL AVE.

50' MERCED ST.

NOTE: THIS MAP WAS PREPARED FOR ASSESSMENT PURPOSES ONLY. NO LIABILITY IS ASSUMED FOR THE ACCURACY OF THE INFORMATION DELINEATED HEREON. ASSESSOR'S PARCELS MAY NOT COMPLY WITH LOCAL LOT SPLIT OR BUILDING SITE ORDINANCES.

13

REVISED	CHANGE	BY
12-04-00	CRE 122-014&015	KR

