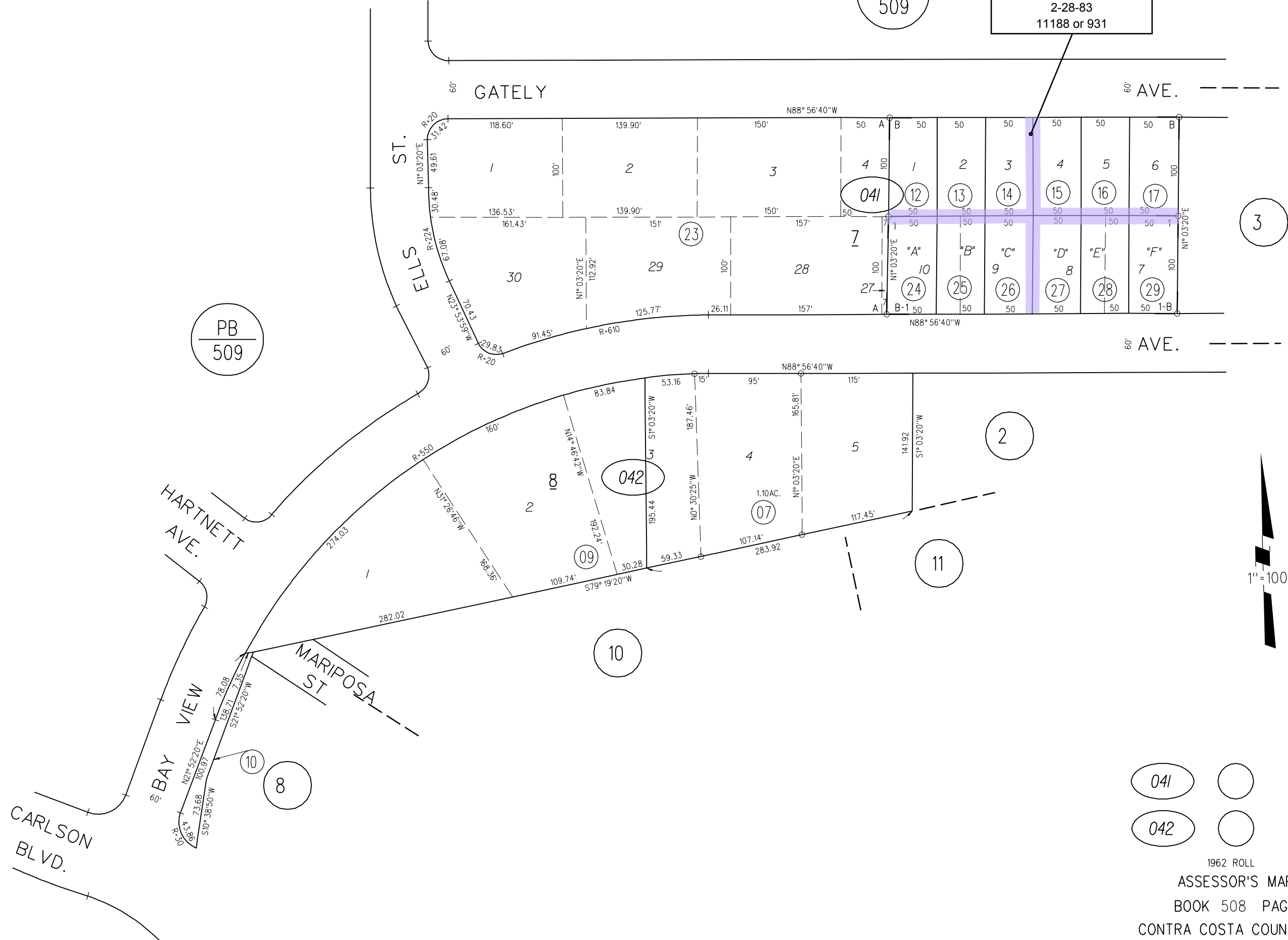


1966 ROLL - A - TRACT 2638 M.B. 83.5-20  
 B - TRACT 3547 M.B. 109-29  
 1- 78P.M.6 6-22-79

TAX CODE AREA

PB  
509

Vacated, City of Richmond  
2-28-83  
11188 or 931



PB  
509

041  
042

1962 ROLL  
 ASSESSOR'S MAP  
 BOOK 508 PAGE 04  
 CONTRA COSTA COUNTY, CALIF.