

A- RICHMOND ANNEX MB 6-144 3/18/1912
POR SEC 28&29 TIN R4W MDBM
POR OF S&O LANDS SURVEY NO 171

INTERSTATE

INTERSTATE



01

12

14

15

22

SAN JOAQUIN ST

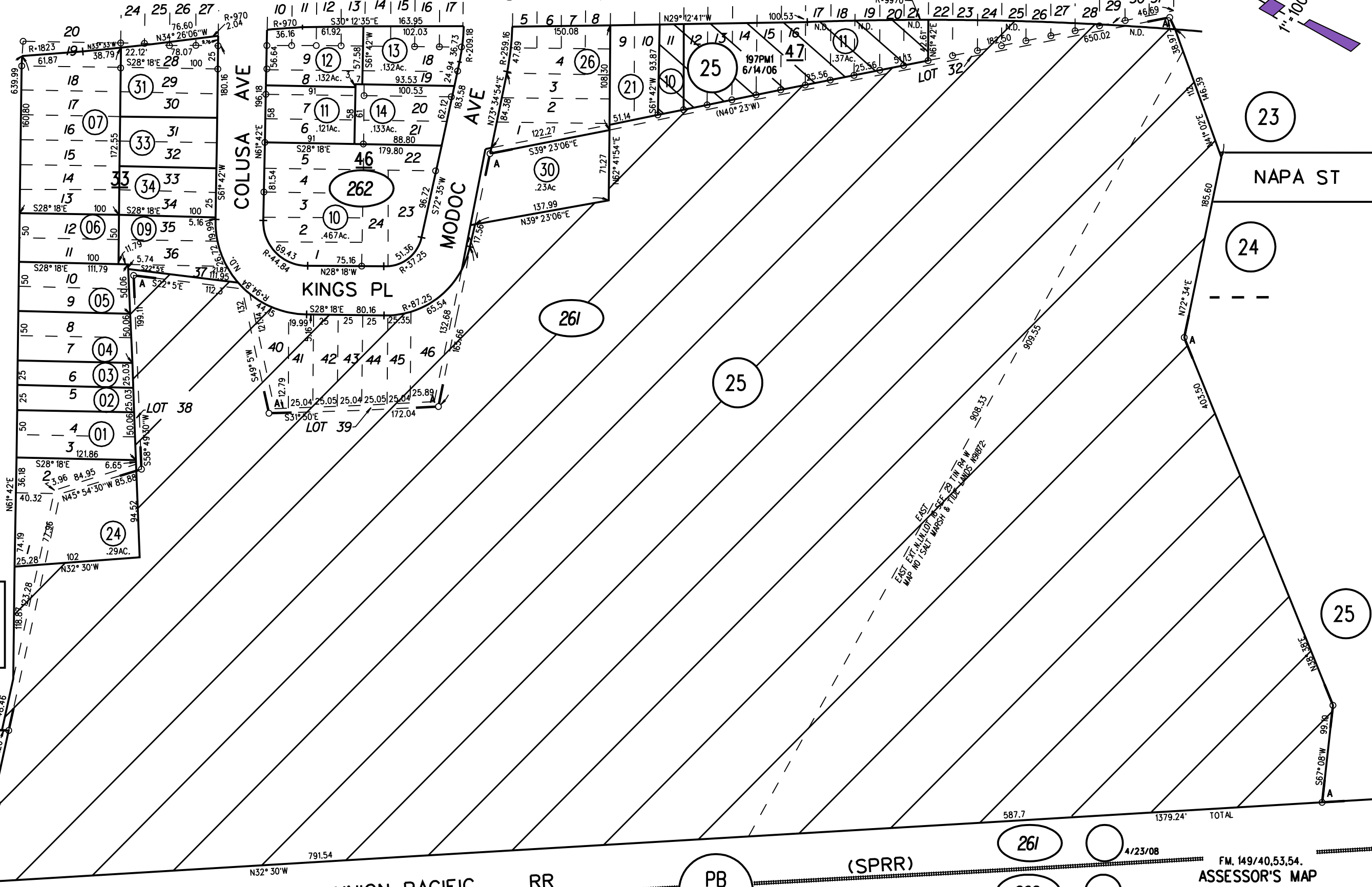
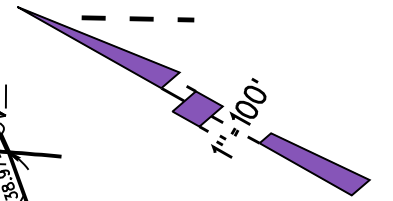
COLUSA AVE

MODOC AVE

KINGS PL

NAPA ST

UNION PACIFIC RR



PB 508

PB 560

(SPRR)

261

262

4/23/08

FM. 149/40,53,54.
ASSESSOR'S MAP
BOOK 507 PAGE 26
CONTRA COSTA COUNTY, CALIF.