

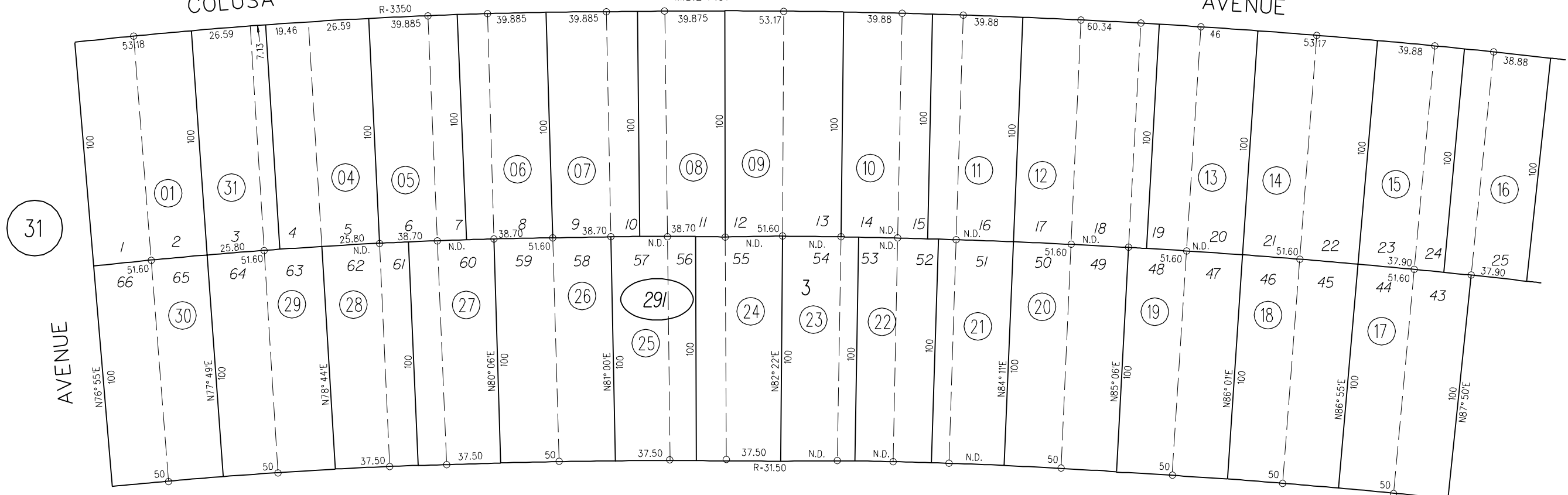
NORTH PORTION OF LOTS 3&6 CERRITO PARK

TAX CODE AREA 300

M.B.2-P.37

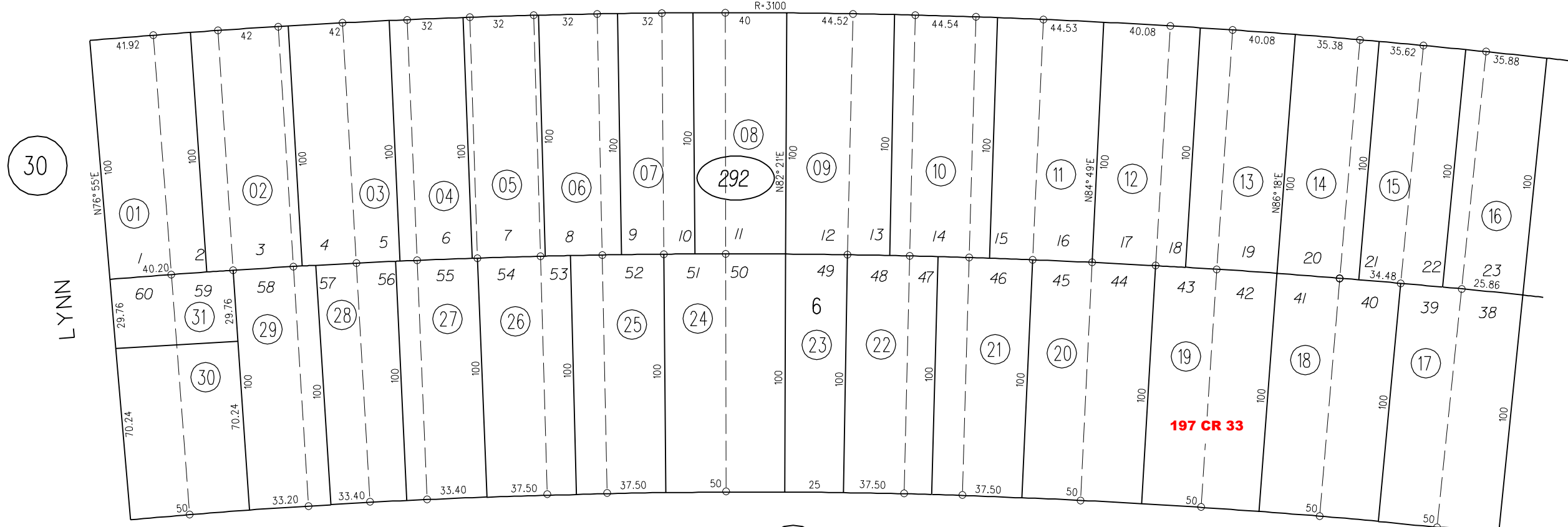
COLUSA

AVENUE



SAN CARLOS

AVENUE

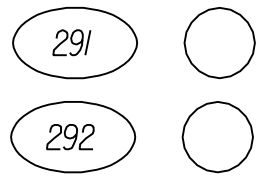


30

28

LYNN

197 CR 33



26

FM. 15/47
ASSESSOR'S MAP
BOOK 504 PAGE 29