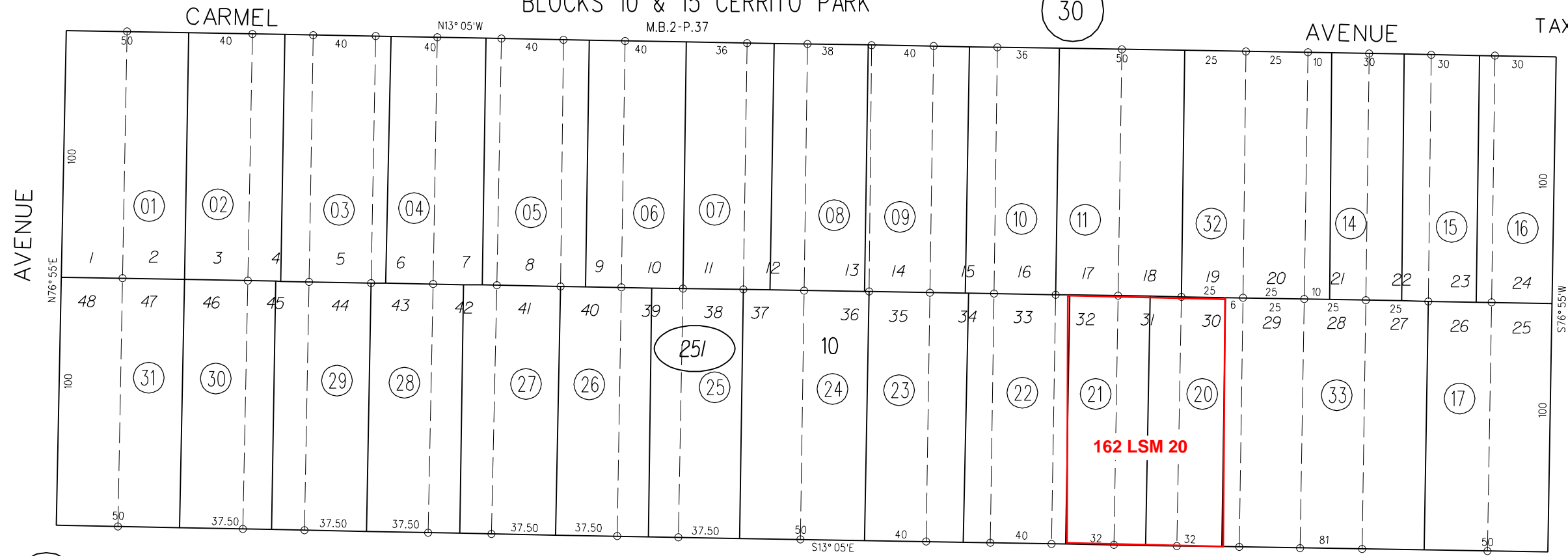


BLOCKS 10 & 15 CERRITO PARK

30

TAX CODE AREA 300



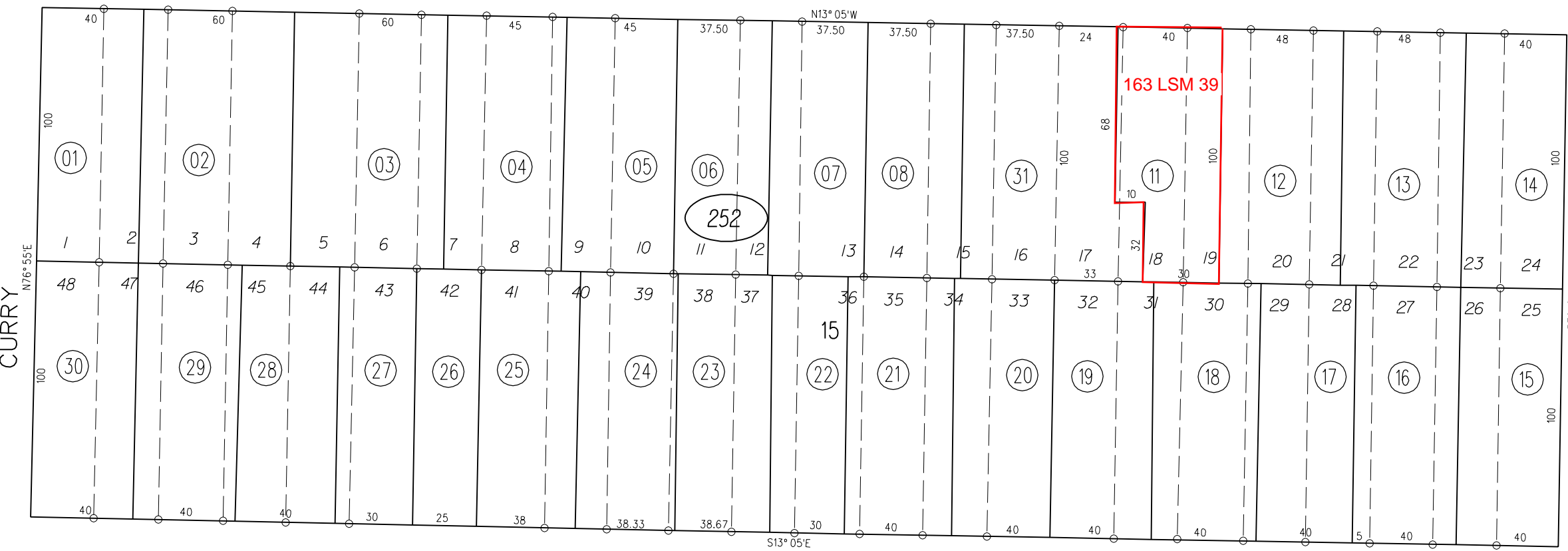
AVENUE.

24

RAMONA

AVENUE

26

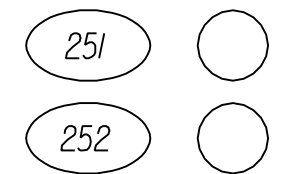


LYNN

POMONA

AVENUE

23



3-28-94
(BLK.251/PCL.33)
FM.15/52

ASSESSOR'S MAP

BOOK 504 PAGE 25

3-4-60 G.C.C. CONTRA COSTA COUNTY,CALIF.