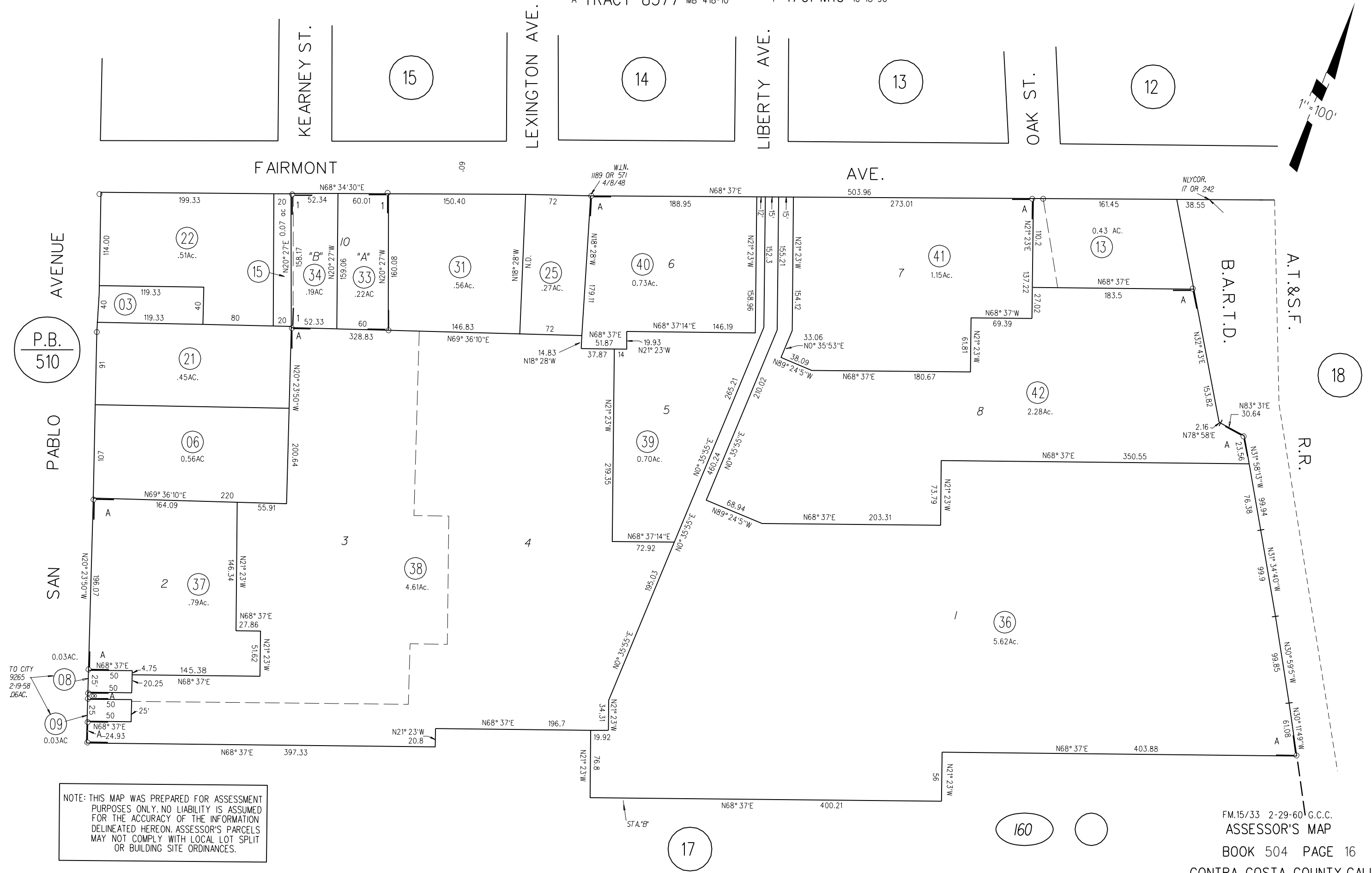
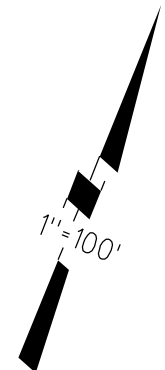


POR. LOTS 4 & 7, ALL LOTS 8,9 & 10 RO. SAN PABLO

A- TRACT 8377 MB 418-10 1- 170PM10 10-18-96

N-6



NOTE: THIS MAP WAS PREPARED FOR ASSESSMENT PURPOSES ONLY. NO LIABILITY IS ASSUMED FOR THE ACCURACY OF THE INFORMATION DELINEATED HEREON. ASSESSOR'S PARCELS MAY NOT COMPLY WITH LOCAL LOT SPLIT OR BUILDING SITE ORDINANCES.