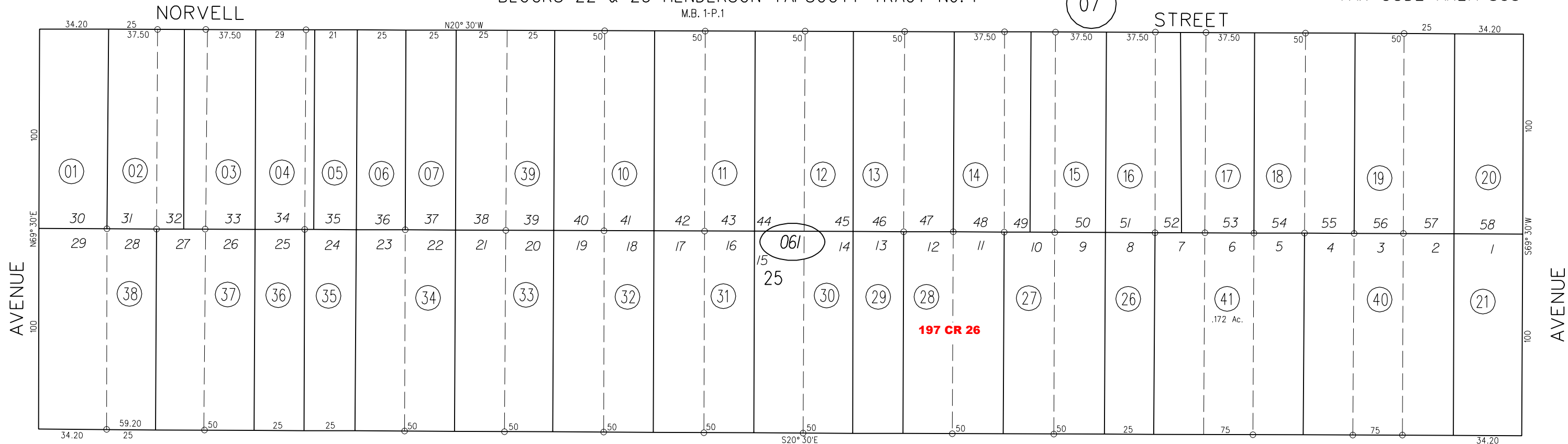


BLOCKS 22 & 25 HENDERSON TAPSCOTT TRACT No. 1

TAX CODE AREA 300

M.B. 1-P.1

07

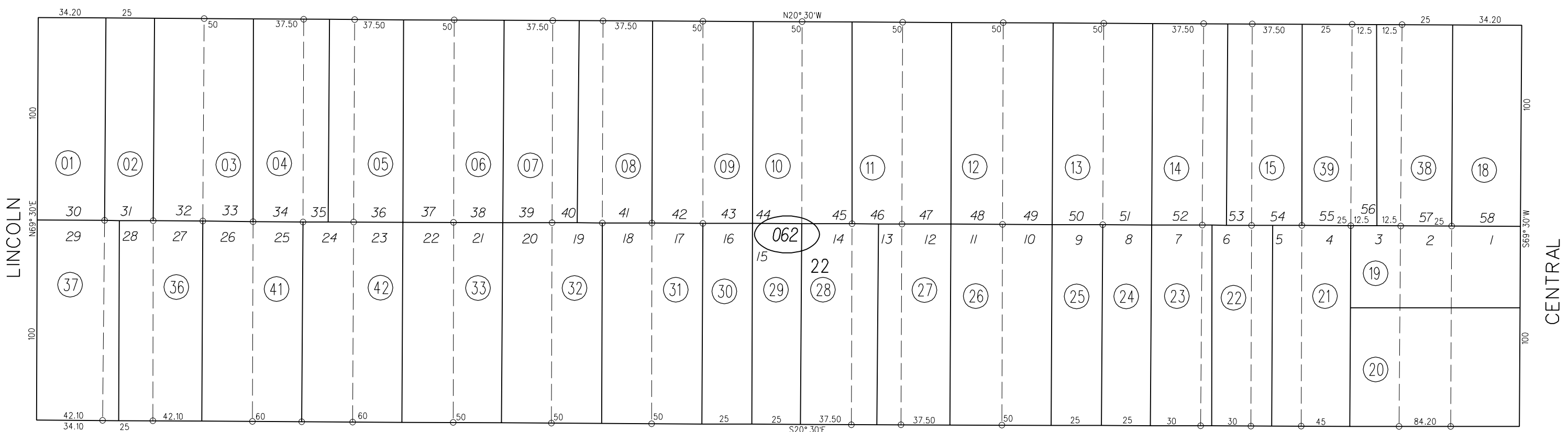
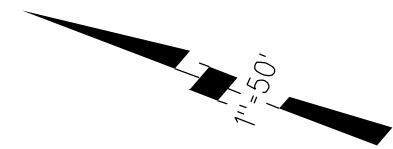


PB 503

EVERETT

STREET

11



RICHMOND

STREET

CENTRAL

03

061

062

05

ASSESSOR'S MAP 4-28-93

BOOK 504 PAGE 06

FM.15/13 1-8-60 G.C.C. CONTRA COSTA COUNTY, CALIF.