

BLOCKS 46 & 47 NORTH BERKELEY TERRACE

M.B. "I"-26

10

BLAKE

STREET

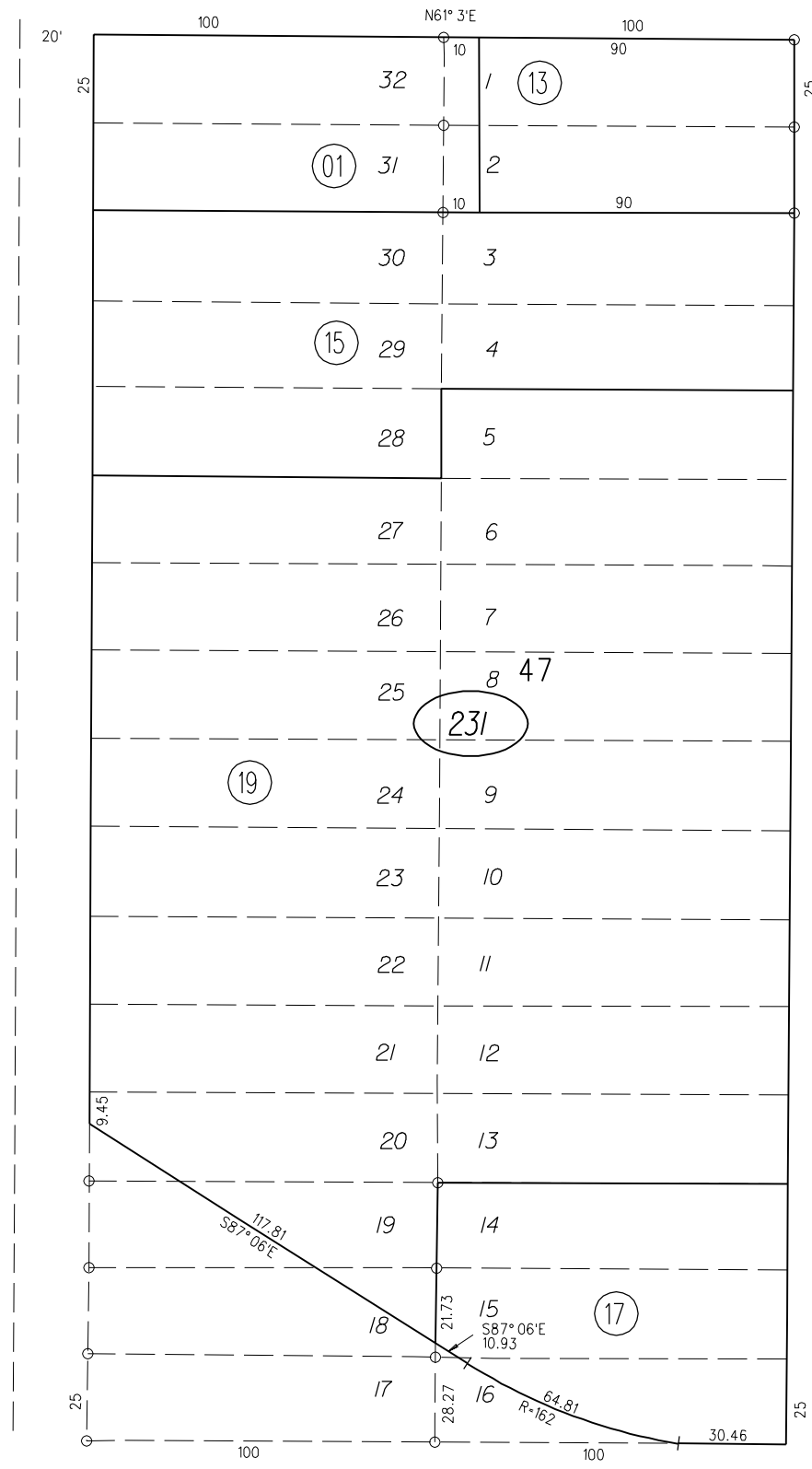
TAX CODE AREA

P B
513

100'

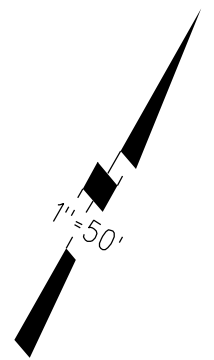
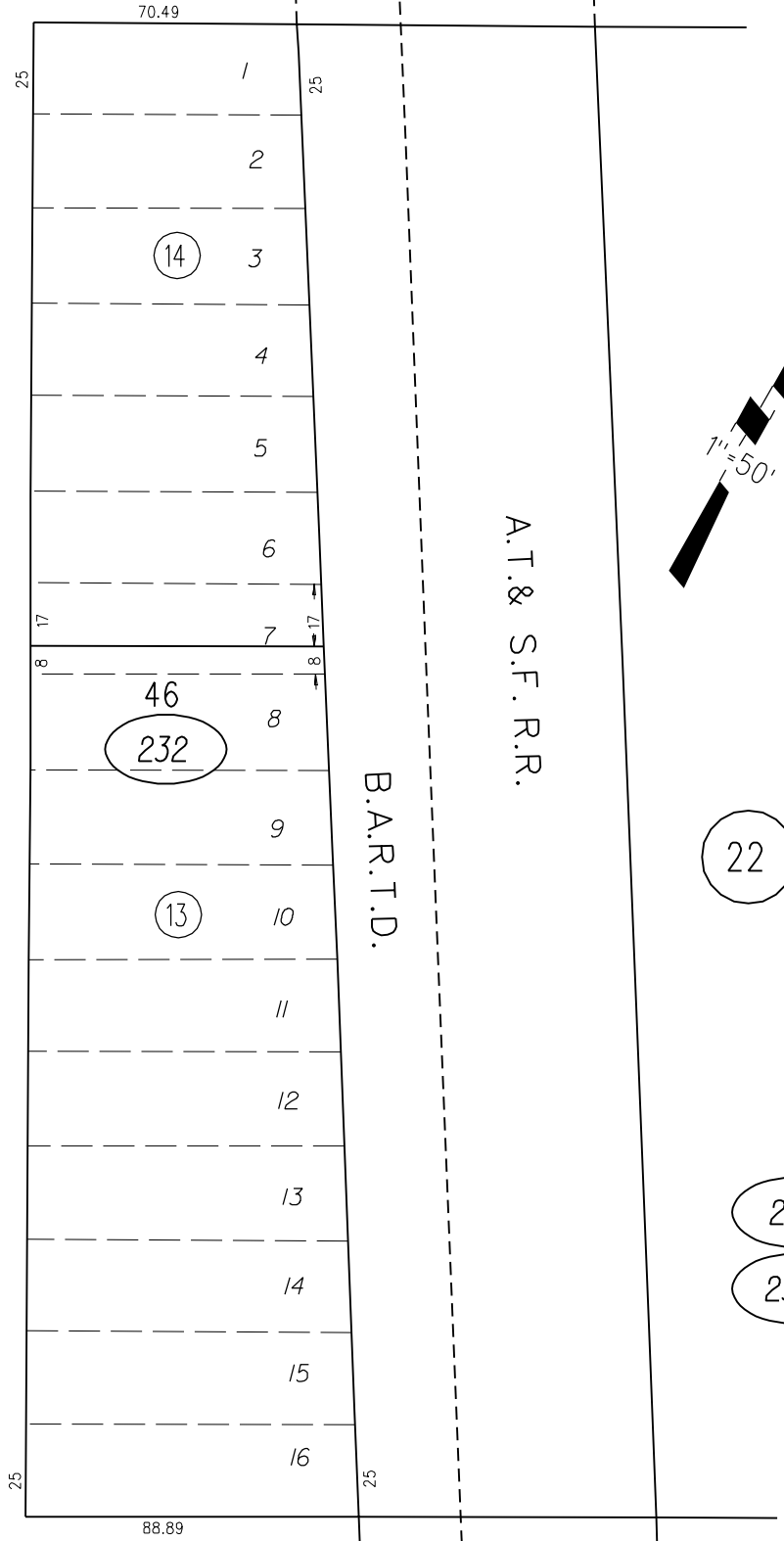
AVENUE

SAN PABLO



STREET

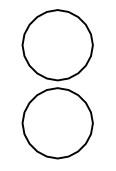
KEARNEY



22

231

232



POTRERO

24

AVENUE

25

1960 ROLL 10-7-82
ASSESSOR'S MAP
BOOK 502 PAGE 23