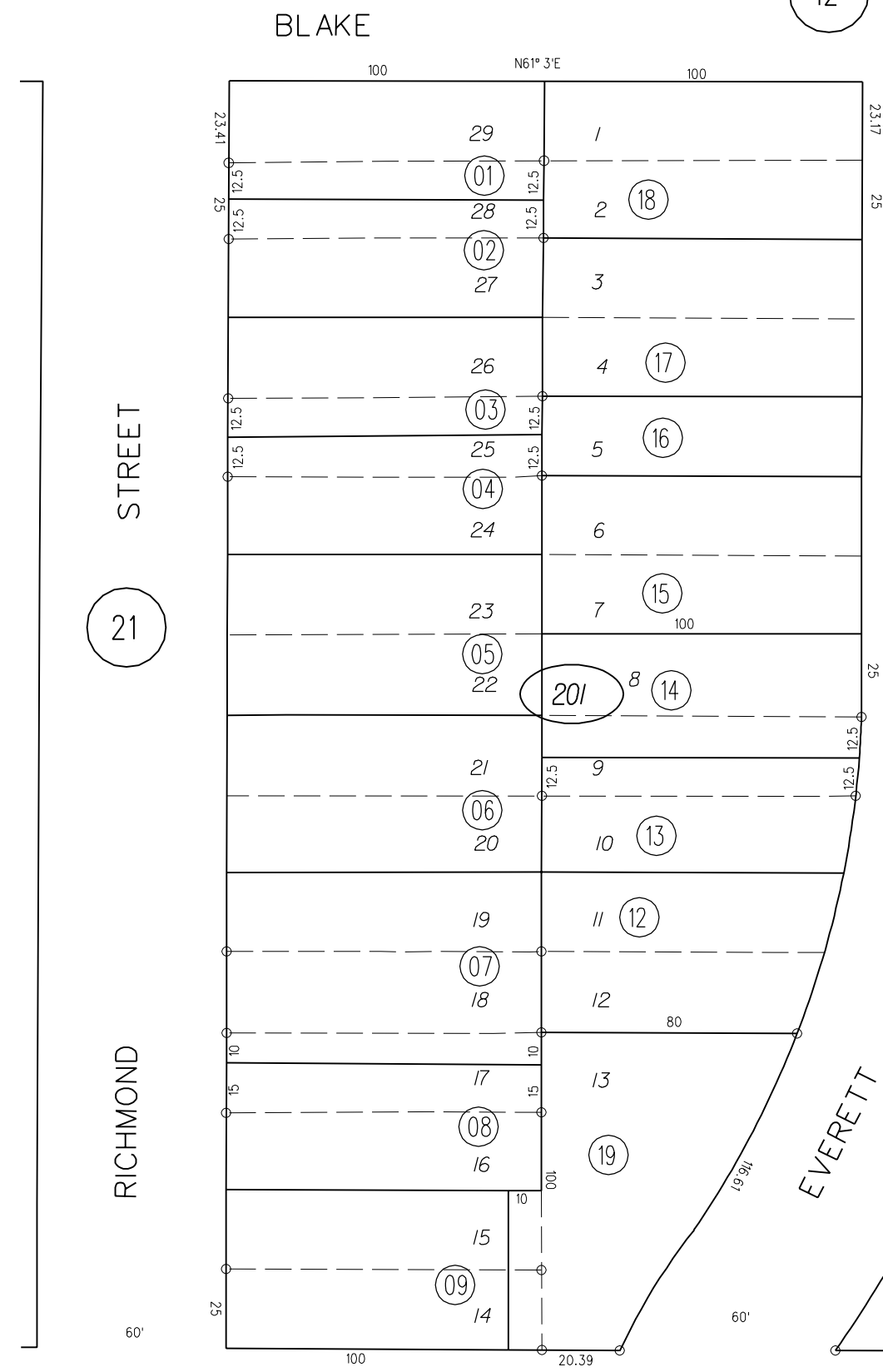


BLOCK 18 AND POR. OF BLOCKS 19 & 27 NORTH BERKELEY TERRACE

TAX CODE AREA

M.B. "I"-26

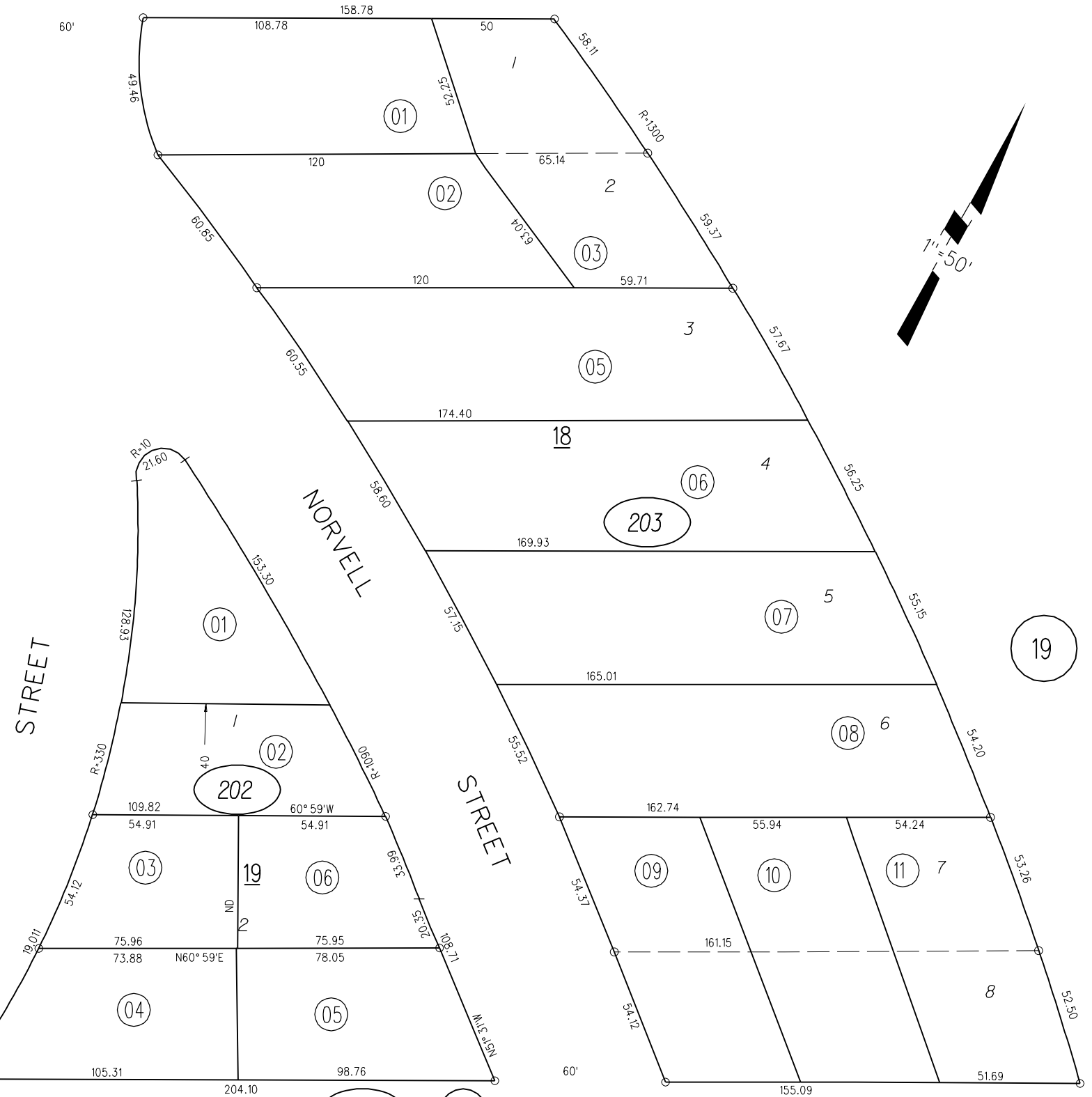
12



STREET  
21

RICHMOND

POTRERO AVE.



STREET

NORVELL

STREET

30

- 201 ○
- 202 ○
- 203 ○

