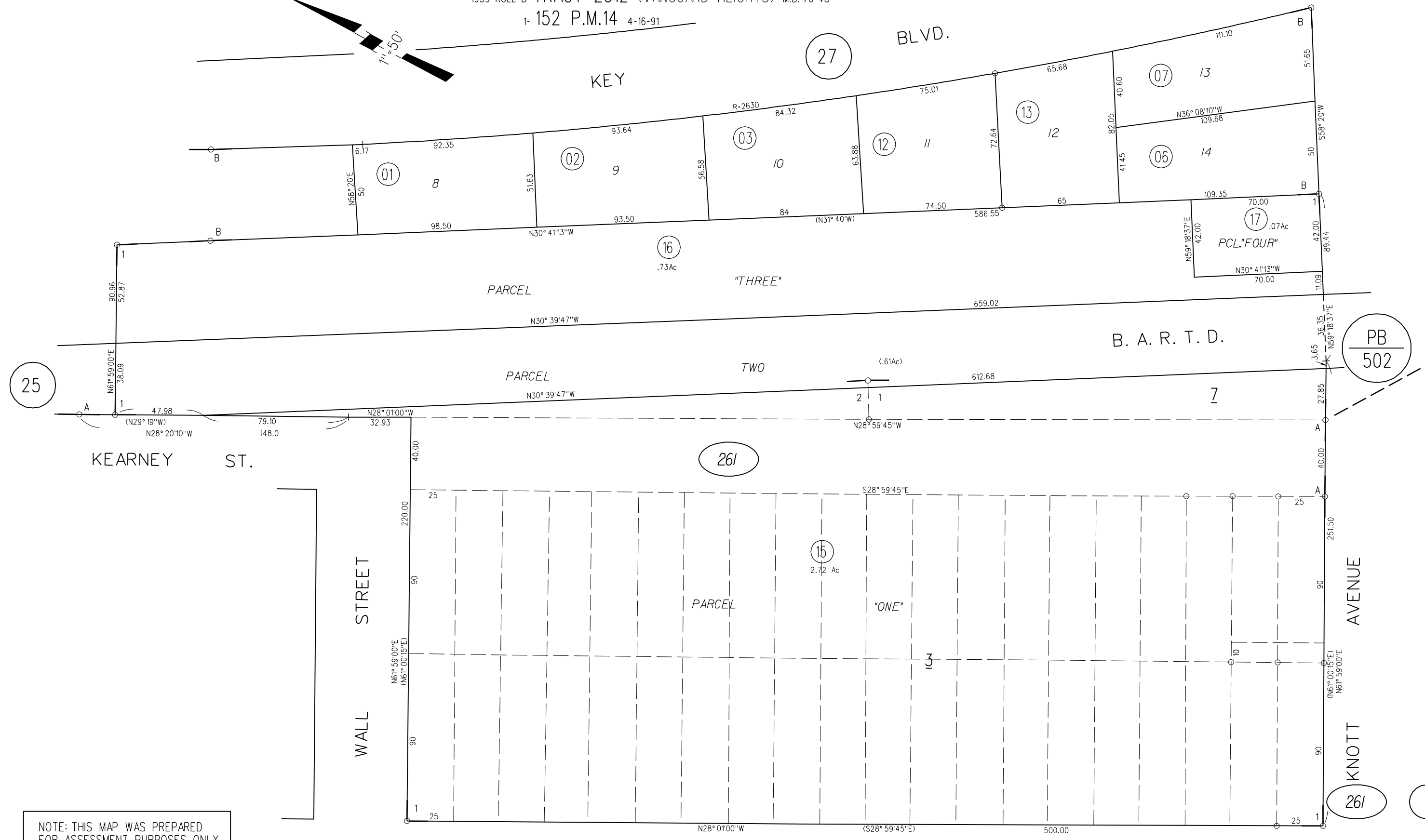
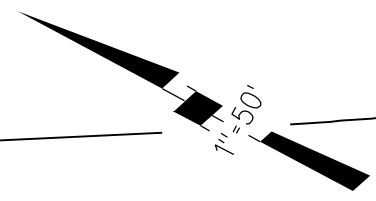


A- RICHMOND JUNCTION M.B. 9-221  
 1959 ROLL-B- TRACT 2612 (VANGUARD HEIGHTS) M.B. 70-48  
 1- 152 P.M.14 4-16-91



NOTE: THIS MAP WAS PREPARED FOR ASSESSMENT PURPOSES ONLY. NO LIABILITY IS ASSUMED FOR THE ACCURACY OF THE INFORMATION DELINEATED HEREON.