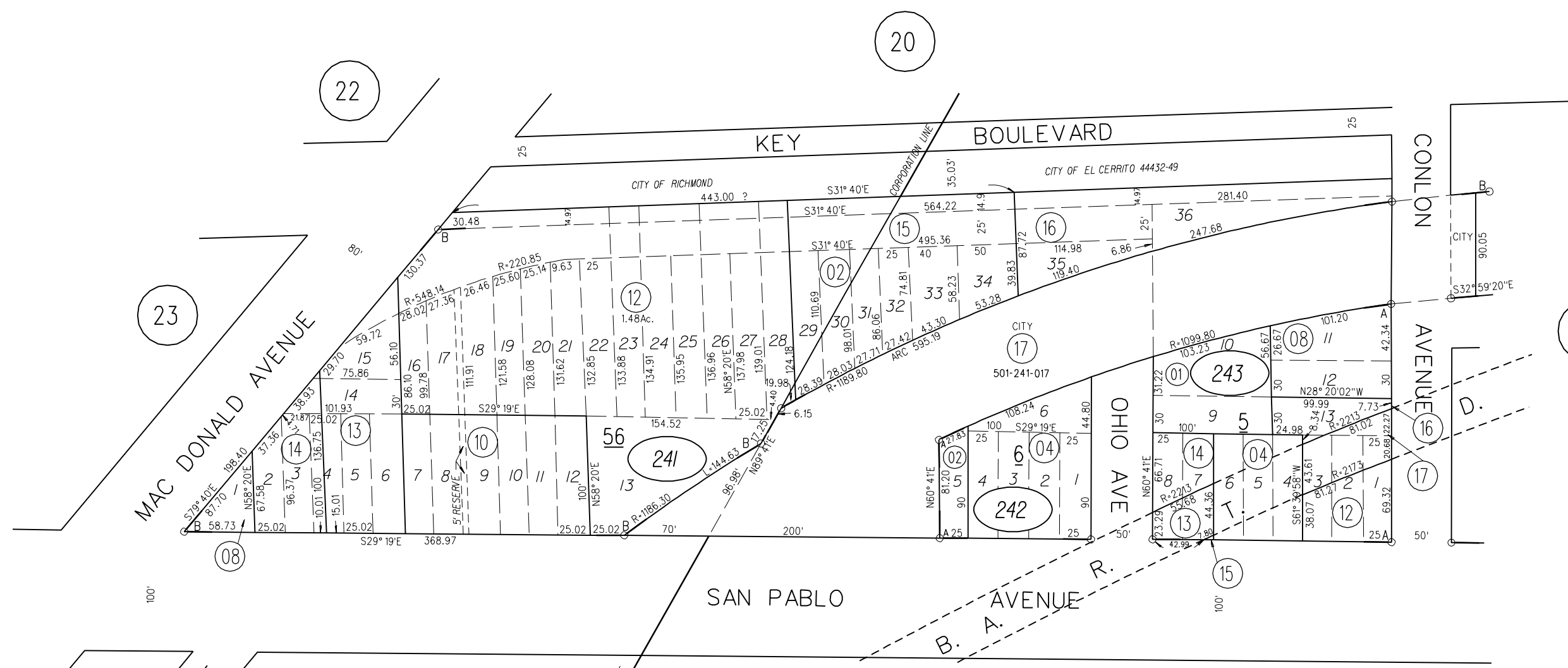
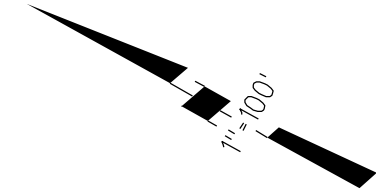


A- RICHMOND JUNCTION M.B. 9-221

B- PORTION OF RICHMOND JUNCTION ADDN M.B. 11-247

249



23

22

20

25

PB  
517

PB  
513

241

17

3/2/04

242

243

NOTE: THIS MAP WAS PREPARED FOR ASSESSMENT PURPOSES ONLY. NO LIABILITY IS ASSUMED FOR THE ACCURACY OF THE INFORMATION DELINEATED HEREON. ASSESSOR'S PARCELS MAY NOT COMPLY WITH LOCAL LOT SPLIT OR BUILDING SITE ORDINANCES.