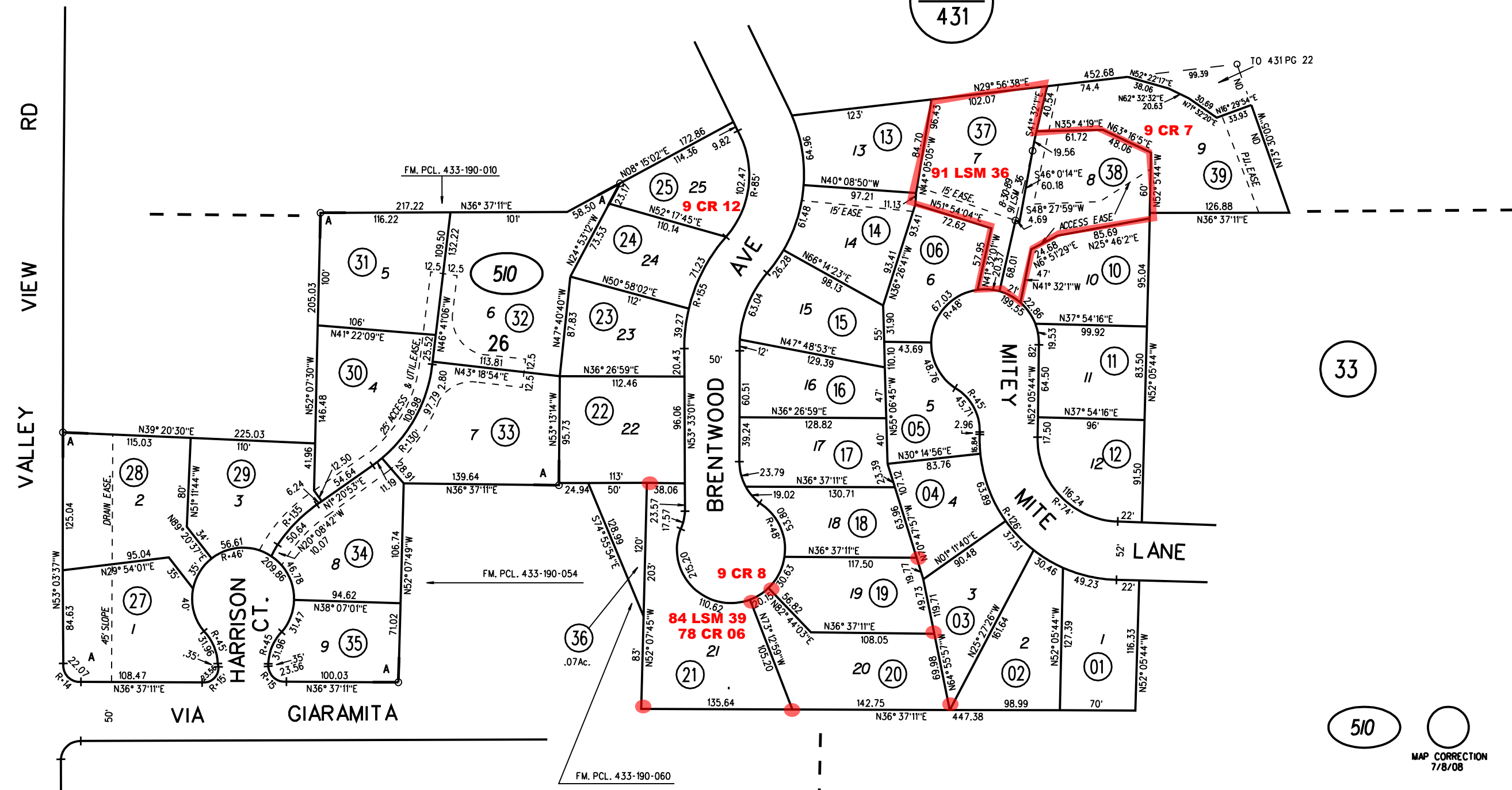


P.B.
431



20

33

19

510

MAP CORRECTION
7/8/08

NOTE: THIS MAP WAS PREPARED FOR ASSESSMENT PURPOSES ONLY. NO LIABILITY IS ASSUMED FOR THE ACCURACY OF THE INFORMATION DELINEATED HEREON. ASSESSOR'S PARCELS MAY NOT COMPLY WITH LOCAL LOT SPLIT OR BUILDING SITE ORDINANCES.

FM. BK. 433, PG. 19 1-14-88
 FM. BK. 431, PG. 22)
 FM. BK. 433, PG. 19) 10-8-87
ASSESSOR'S MAP

BOOK 433 PAGE 51
 CONTRA COSTA COUNTY, CALIF.