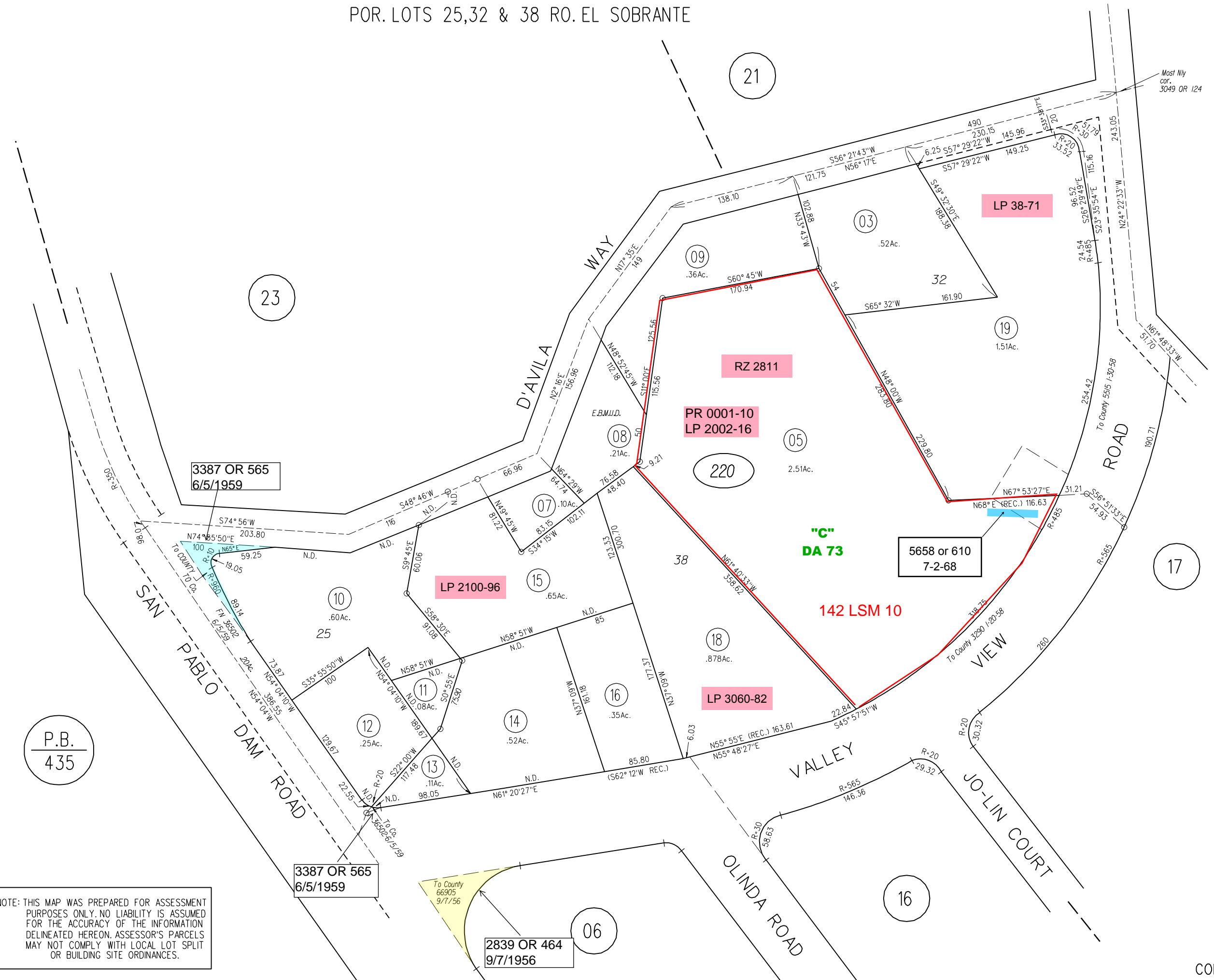
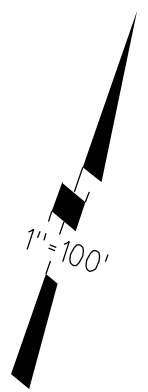


POR. LOTS 25,32 & 38 RO. EL SOBRANTE



P.B.
435

3387 OR 565
6/5/1959

3387 OR 565
6/5/1959

LP 2100-96

PR 0001-10
LP 2002-16

220

"C"
DA 73

5658 or 610
7-2-68

142 LSM 10

LP 3060-82

2839 OR 464
9/7/1956

NOTE: THIS MAP WAS PREPARED FOR ASSESSMENT PURPOSES ONLY. NO LIABILITY IS ASSUMED FOR THE ACCURACY OF THE INFORMATION DELINEATED HEREON. ASSESSOR'S PARCELS MAY NOT COMPLY WITH LOCAL LOT SPLIT OR BUILDING SITE ORDINANCES.