

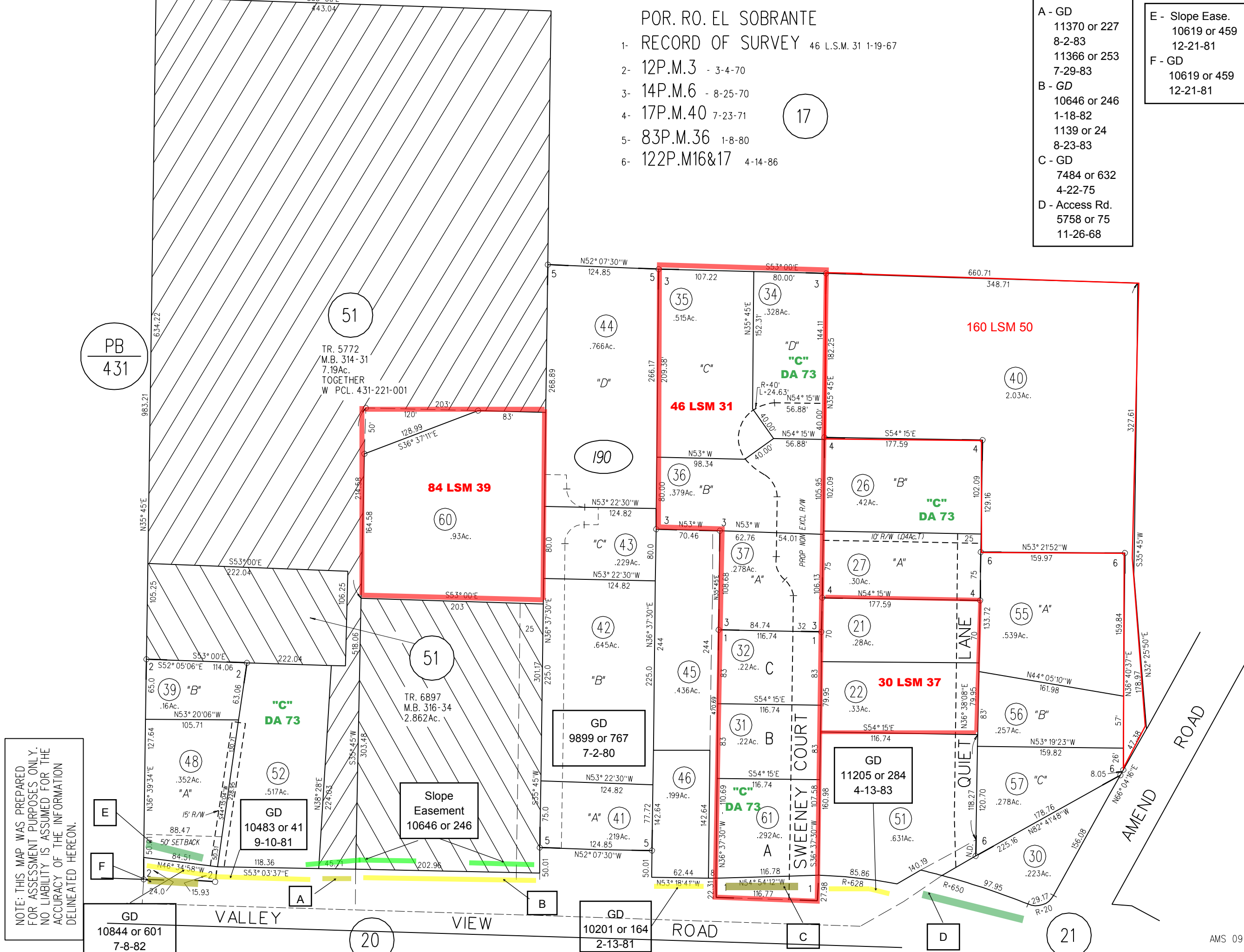
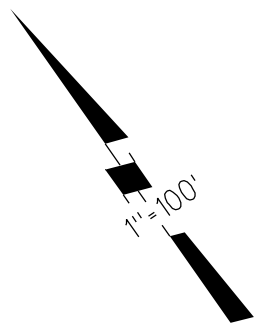
POR. RO. EL SOBRANTE  
 RECORD OF SURVEY 46 L.S.M. 31 1-19-67  
 1- 12P.M.3 - 3-4-70  
 2- 14P.M.6 - 8-25-70  
 3- 17P.M.40 7-23-71  
 4- 83P.M.36 1-8-80  
 5- 122P.M16&17 4-14-86

17

A - GD  
 11370 or 227  
 8-2-83  
 11366 or 253  
 7-29-83  
 B - GD  
 10646 or 246  
 1-18-82  
 1139 or 24  
 8-23-83  
 C - GD  
 7484 or 632  
 4-22-75  
 D - Access Rd.  
 5758 or 75  
 11-26-68

E - Slope Ease.  
 10619 or 459  
 12-21-81  
 F - GD  
 10619 or 459  
 12-21-81

J-7



17

190

ASSESSOR'S MAP  
 BOOK 433 PAGE 19

AMS 09-15-99 CONTRA COSTA COUNTY, CALIF.