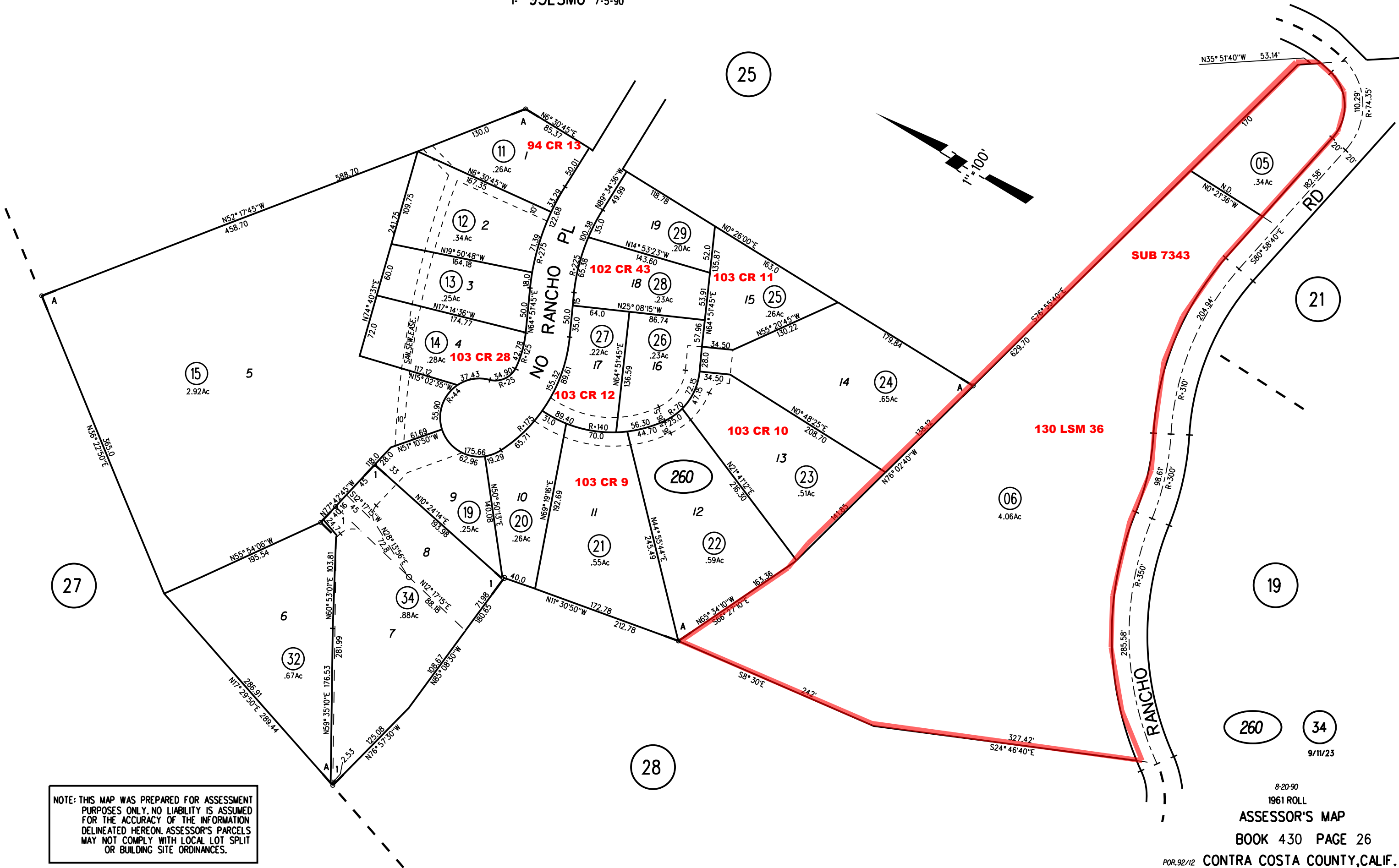


POR. SEC. 27, T.2N., R.4W., M.D.B. & M.

1982 - A - TRACT 5509 M.B. 251-44

1- 95LSM6 7-5-90



NOTE: THIS MAP WAS PREPARED FOR ASSESSMENT PURPOSES ONLY. NO LIABILITY IS ASSUMED FOR THE ACCURACY OF THE INFORMATION DELINEATED HEREON. ASSESSOR'S PARCELS MAY NOT COMPLY WITH LOCAL LOT SPLIT OR BUILDING SITE ORDINANCES.

8-20-90
1961 ROLL
ASSESSOR'S MAP
BOOK 430 PAGE 26
CONTRA COSTA COUNTY, CALIF.
Sanborn Date : 02/02/1999