

POR SEC 27 T2N, R4W, MDB&M

- 1- 30LSM48 10-22-64
- 2- 34PM49 8-6-74
- 3- 87PM30 7-9-80
- 4- 98PM30 11-20-81
- 5- 192PM32 3-1-05

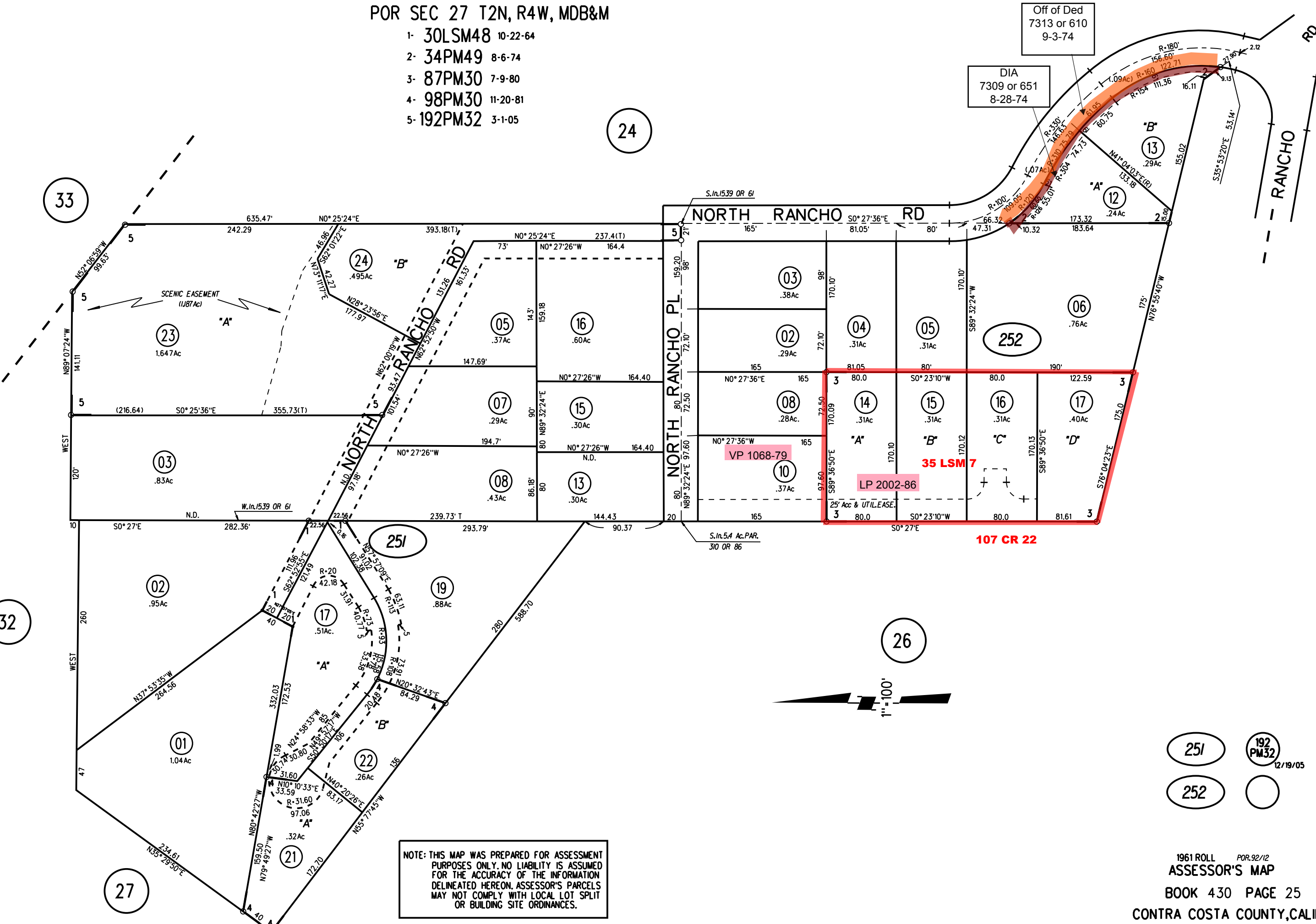
24

33

32

27

26



NOTE: THIS MAP WAS PREPARED FOR ASSESSMENT PURPOSES ONLY. NO LIABILITY IS ASSUMED FOR THE ACCURACY OF THE INFORMATION DELINEATED HEREON. ASSESSOR'S PARCELS MAY NOT COMPLY WITH LOCAL LOT SPLIT OR BUILDING SITE ORDINANCES.

251  
192 PM32 12/19/05  
252