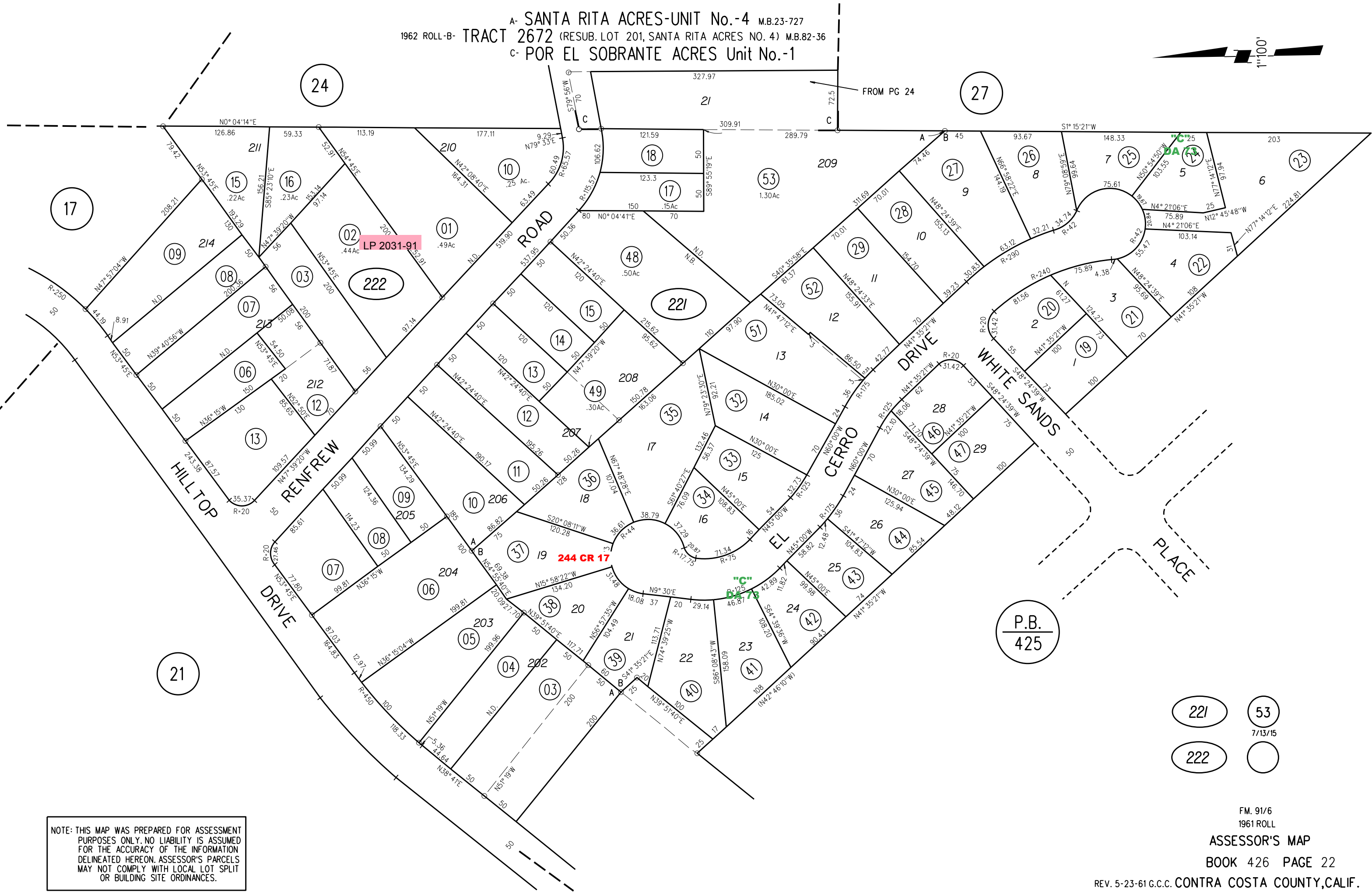


A- SANTA RITA ACRES-UNIT No.-4 M.B.23-727
 1962 ROLL-B- TRACT 2672 (RESUB. LOT 201, SANTA RITA ACRES NO. 4) M.B.82-36
 C- POR EL SOBRANTE ACRES Unit No.-1



LP 2031-91

244 CR 17

C 2473

P.B.
425

221 53
7/13/15
222

NOTE: THIS MAP WAS PREPARED FOR ASSESSMENT PURPOSES ONLY. NO LIABILITY IS ASSUMED FOR THE ACCURACY OF THE INFORMATION DELINEATED HEREON. ASSESSOR'S PARCELS MAY NOT COMPLY WITH LOCAL LOT SPLIT OR BUILDING SITE ORDINANCES.