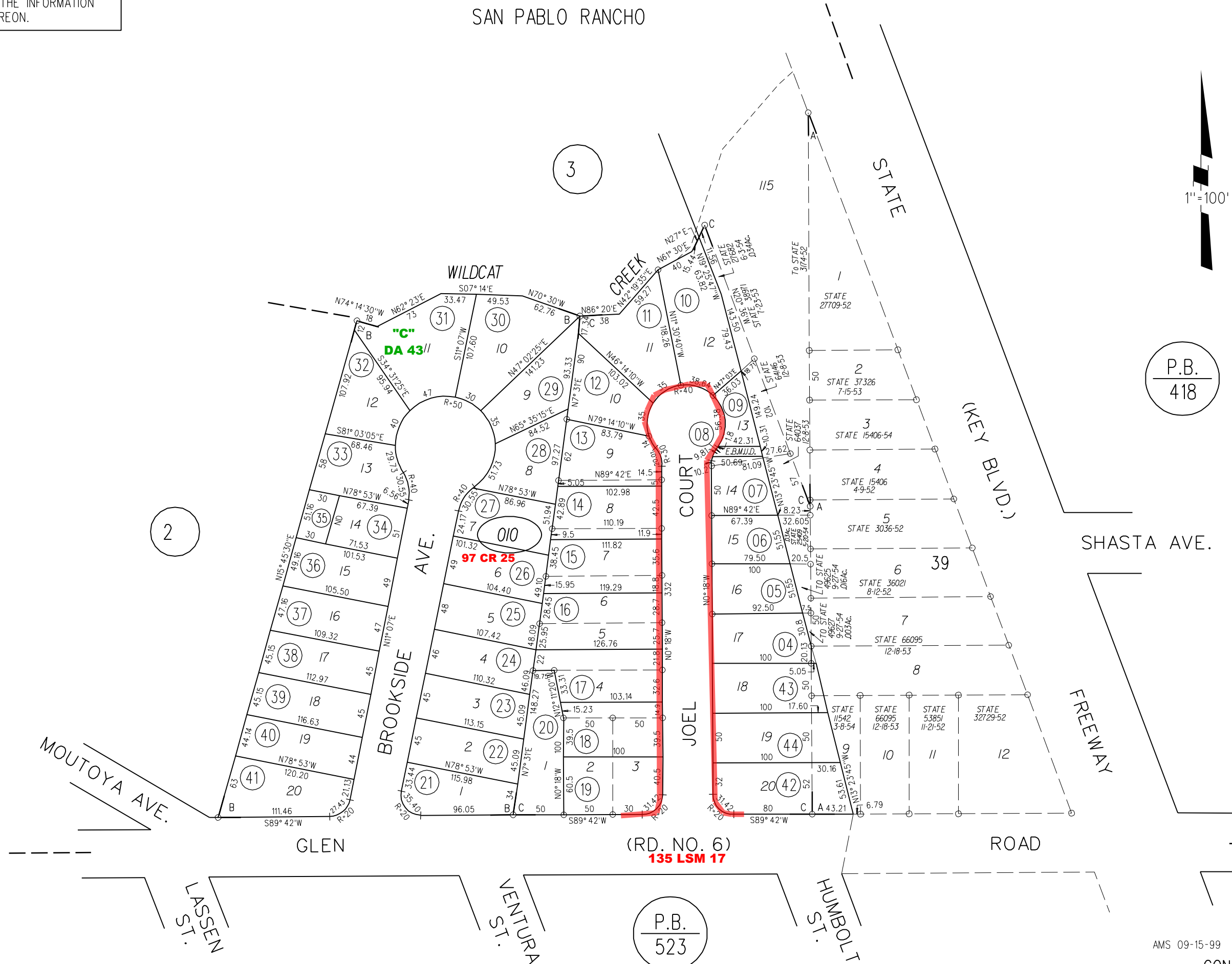


NOTE: THIS MAP WAS PREPARED FOR ASSESSMENT PURPOSES ONLY. NO LIABILITY IS ASSUMED FOR THE ACCURACY OF THE INFORMATION DELINEATED HEREON.

A- EAST RICHMOND BLVD. M.B. 1-19  
 B- BROOKSIDE M.B. 25-810  
 C- CATHERINE TRACT M.B. 37-20  
 SAN PABLO RANCHO

TAX CODE AREA



P.B.  
418

P.B.  
523

1961 ROLL  
 ASSESSOR'S MAP  
 AMS 09-15-99 BOOK 417 PAGE 01  
 CONTRA COSTA COUNTY, CALIF.