

POR. ANDRADE ROSE NO. 1 TRACT

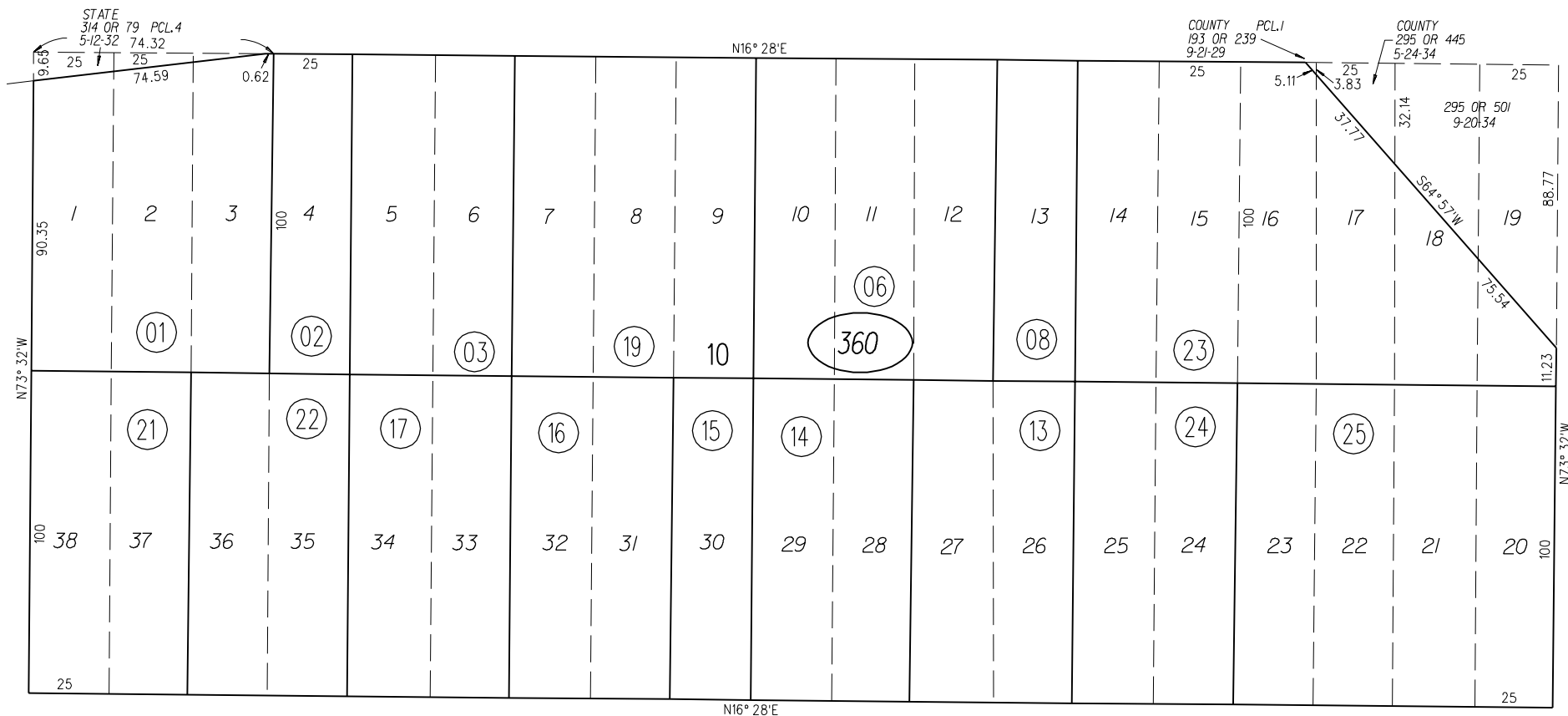
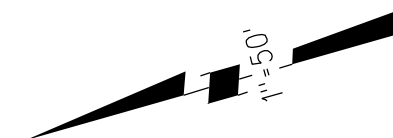
M.B. 10-233

DA 127

34

SAN PABLO AVENUE

(22 ND ST.)



31

LAKE ST.

RUMRILL ST.

BLVD.

HOWARD

21 ST

ST.

37

360

360

NOTE: THIS MAP WAS PREPARED FOR ASSESSMENT PURPOSES ONLY. NO LIABILITY IS ASSUMED FOR THE ACCURACY OF THE INFORMATION DELINEATED HEREON.

FM. 16/14
1961 ROLL
ASSESSOR'S MAP
BOOK 413 PAGE 36