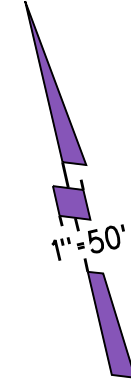


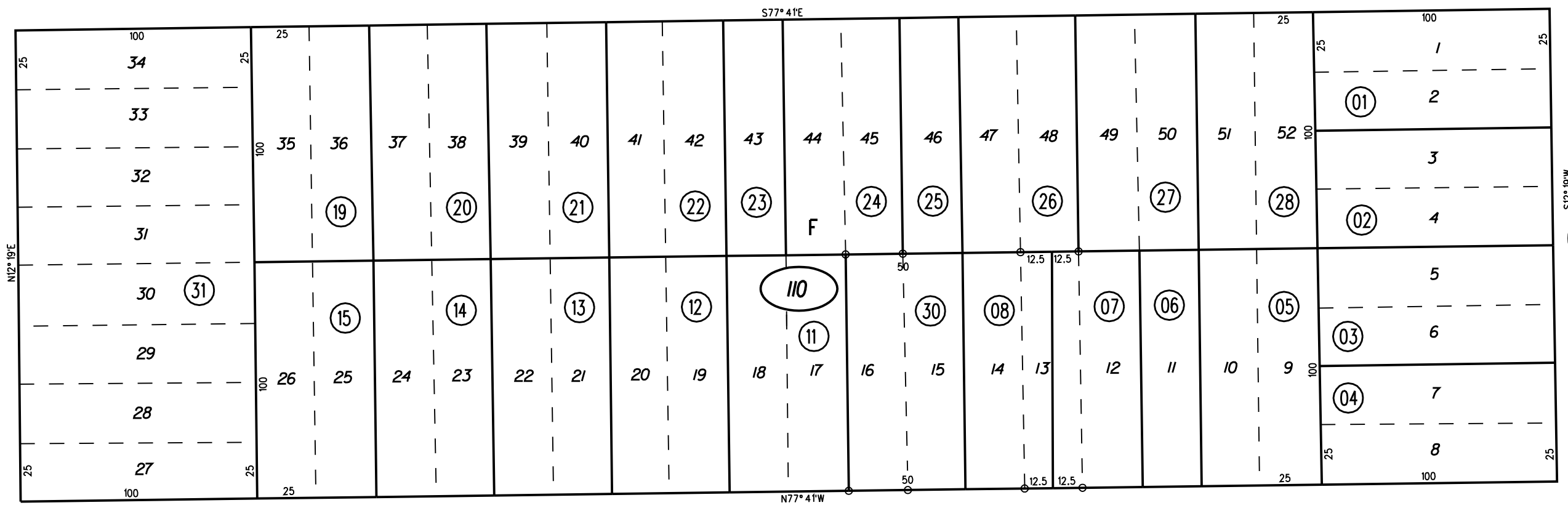
BROADWAY ADDITION M.B.12-264



P.B. 408  
BNSF RR (AT&SF RR)

INCORPORATION LINE  
S.B.E. 804-7-60  
RICHMOND  
SAN PABLO

ROAD (GIANT RD.) NO. 21



50

50

N12°19'E

25

100

60

50

JOHN

STANTON

10

S77°41'E

N77°41'W

DA 127

13

110

31  
4/25/07

AVE

AVE

ST.

12

11 TH

60

55

NOTE: THIS MAP WAS PREPARED FOR ASSESSMENT PURPOSES ONLY. NO LIABILITY IS ASSUMED FOR THE ACCURACY OF THE INFORMATION DELINEATED HEREON. ASSESSOR'S PARCELS MAY NOT COMPLY WITH LOCAL LOT SPLIT OR BUILDING SITE ORDINANCES.

FM. 16/1  
ASSESSOR'S MAP  
BOOK 413 PAGE 11  
CONTRA COSTA COUNTY, CALIF.