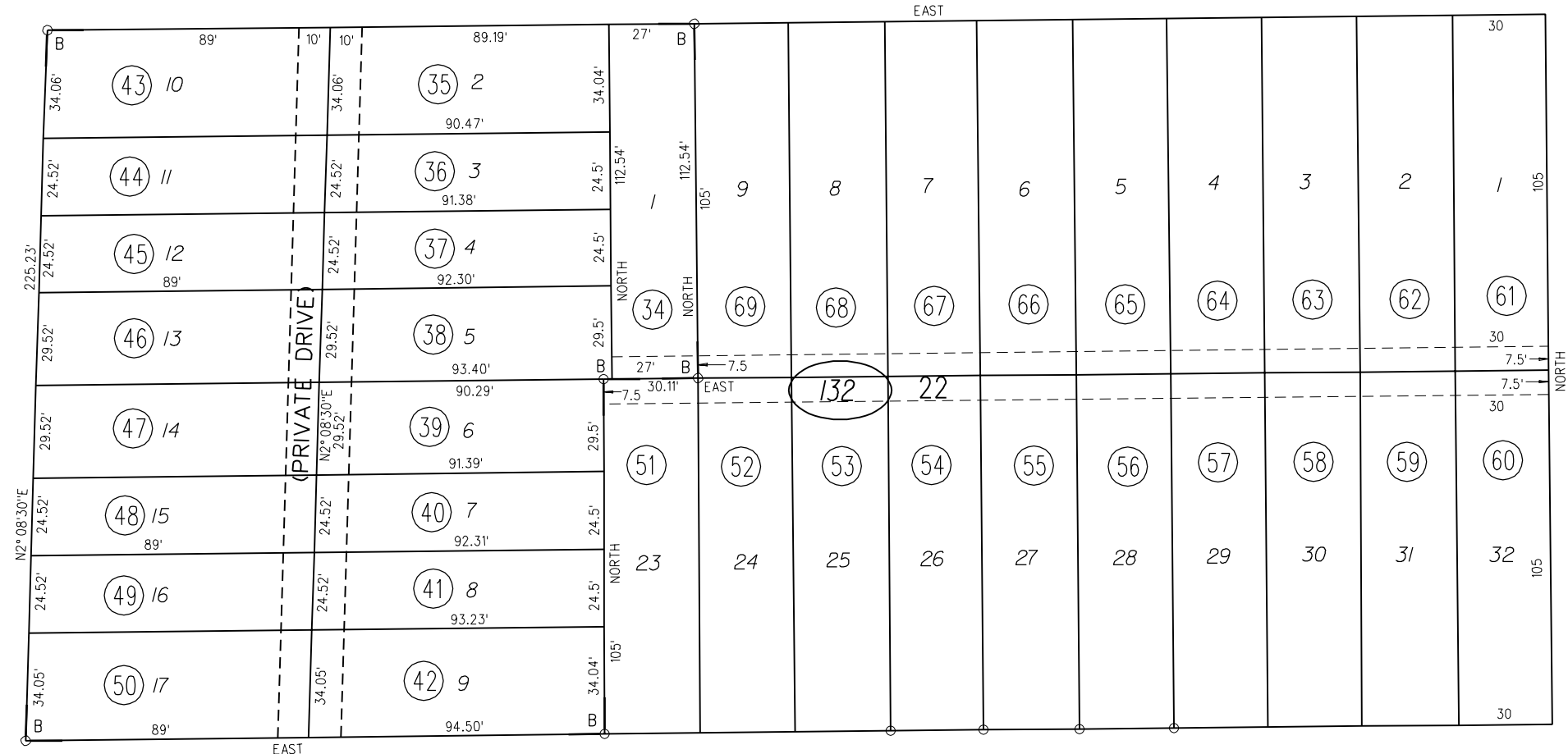


22

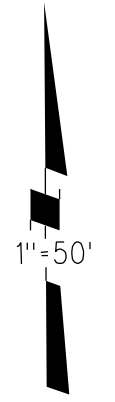
A- EMERIC SUB'N No.2 (SAN PABLO RANCHO) M.B. 1-21
B-1990 ROLL- TRACT 7209 (RUMRILL SUBDIVISION No.1) M.B. 331-26
1- 159PM2 7-21-92

TAX CODE AREA

70 EMERIC AVE. 70

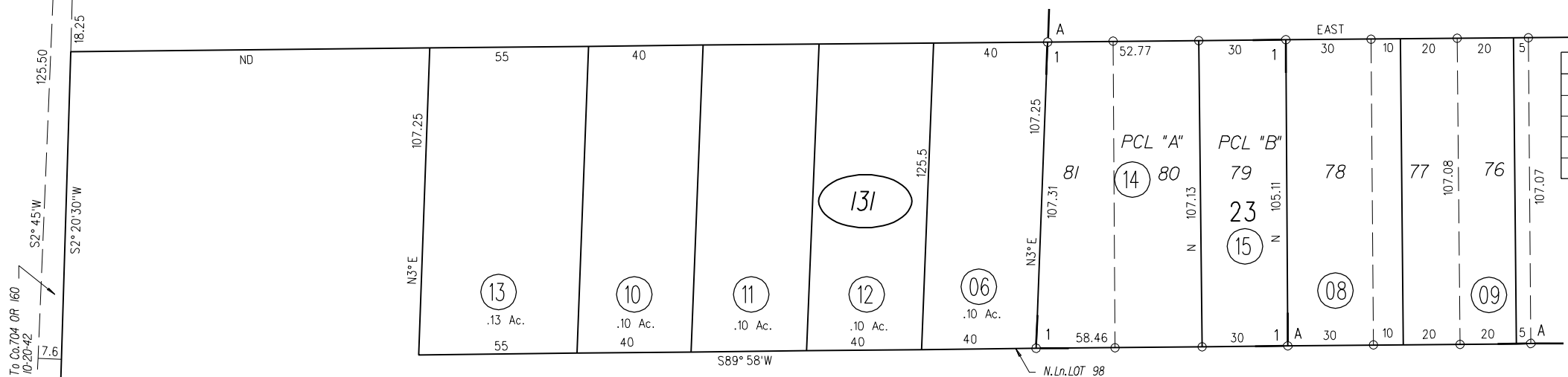


50 ST. 50
15th

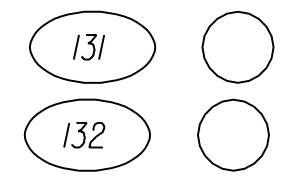


14

32 CALIFORNIA AVE. 50



REVISED	CHANGE	BY
8-12-92	159PM2	MJ



1961 ROLL 8-13-92
ASSESSOR'S MAP
BOOK 410 PAGE 13
17-15 CONTRA COSTA COUNTY, CALIF.

02

BLVD.

RUMRILL

SUTRO AVE.

12