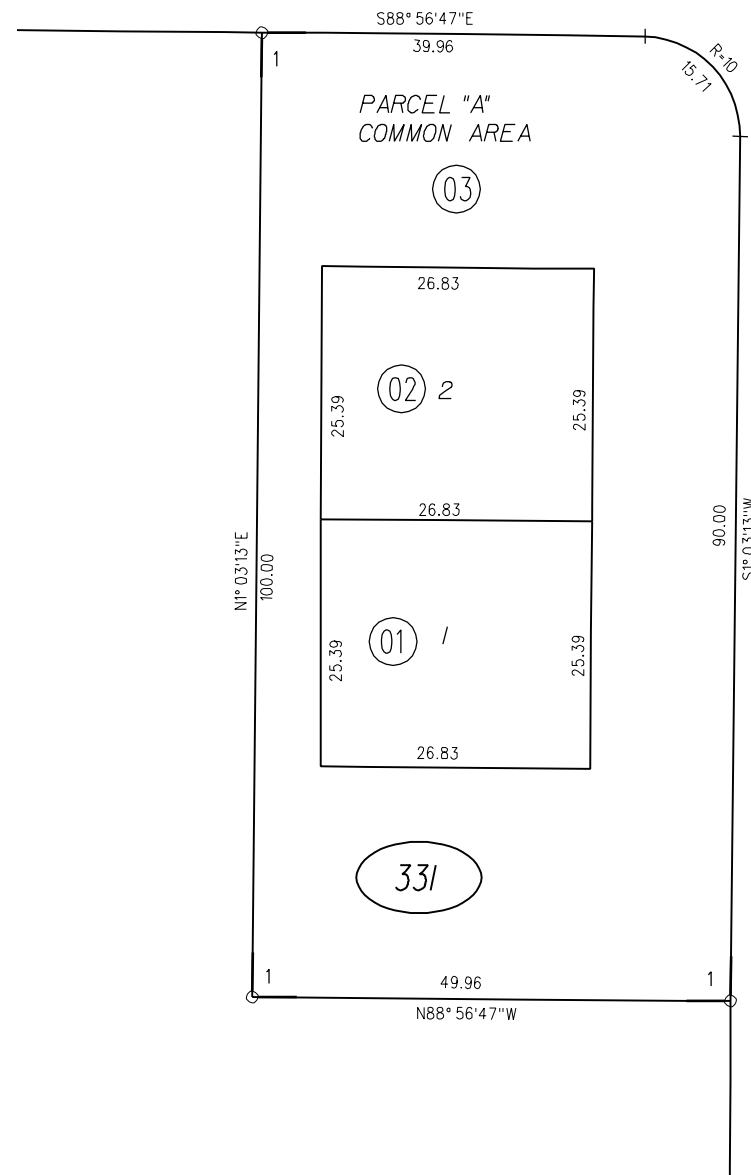


1-1983 ROLL 102 P.M. 43 9-14-82
 2-1983 ROLL 102 P.M. 44 9-14-82

60' MARKET

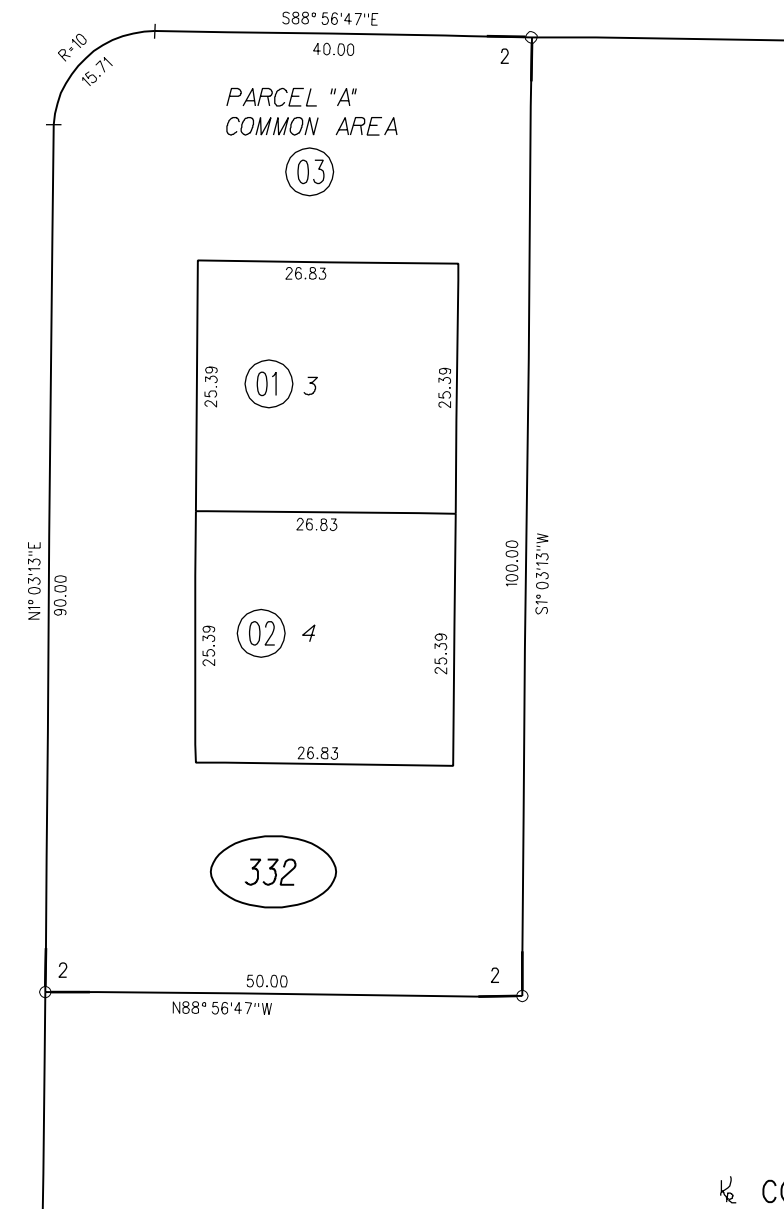


STREET

1" = 20'

60'

TRUMAN STREET



331

332

FM. 409/16,19 9-29-82

ASSESSOR'S MAP

BOOK 409 PAGE 33

CONTRA COSTA COUNTY, CALIF.