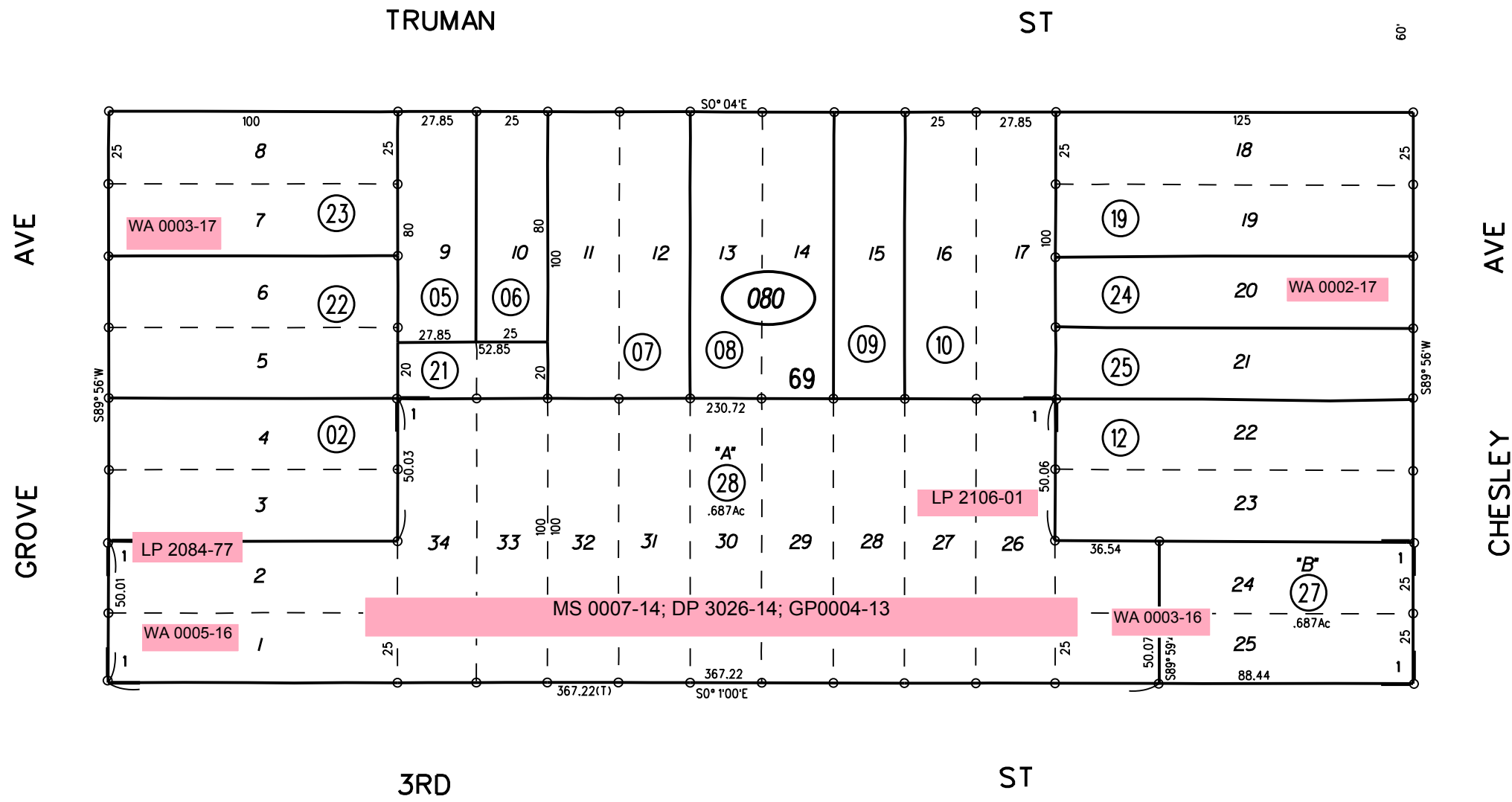
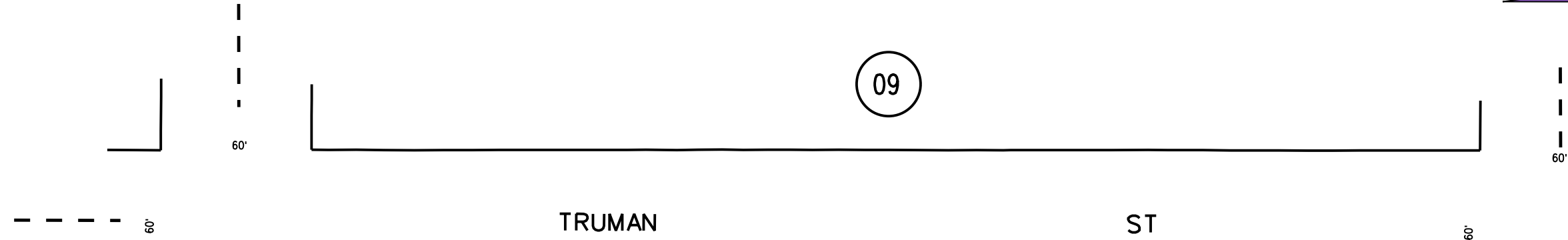
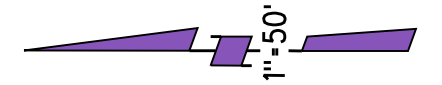


NORTH RICHMOND LAND & FERRY CO. TRACT NO. 2 MB 5-124

1- 213PM31 2/26/18



18

P.B.
561

NOTE: THIS MAP WAS PREPARED FOR ASSESSMENT PURPOSES ONLY. NO LIABILITY IS ASSUMED FOR THE ACCURACY OF THE INFORMATION DELINEATED HEREON. ASSESSOR'S PARCELS MAY NOT COMPLY WITH LOCAL LOT SPLIT OR BUILDING SITE ORDINANCES.

FILBERT ST

080 213 PM31 7/2/18

1961 ROLL ASSESSOR'S MAP BOOK 409 PAGE 08 CONTRA COSTA COUNTY, CALIF.