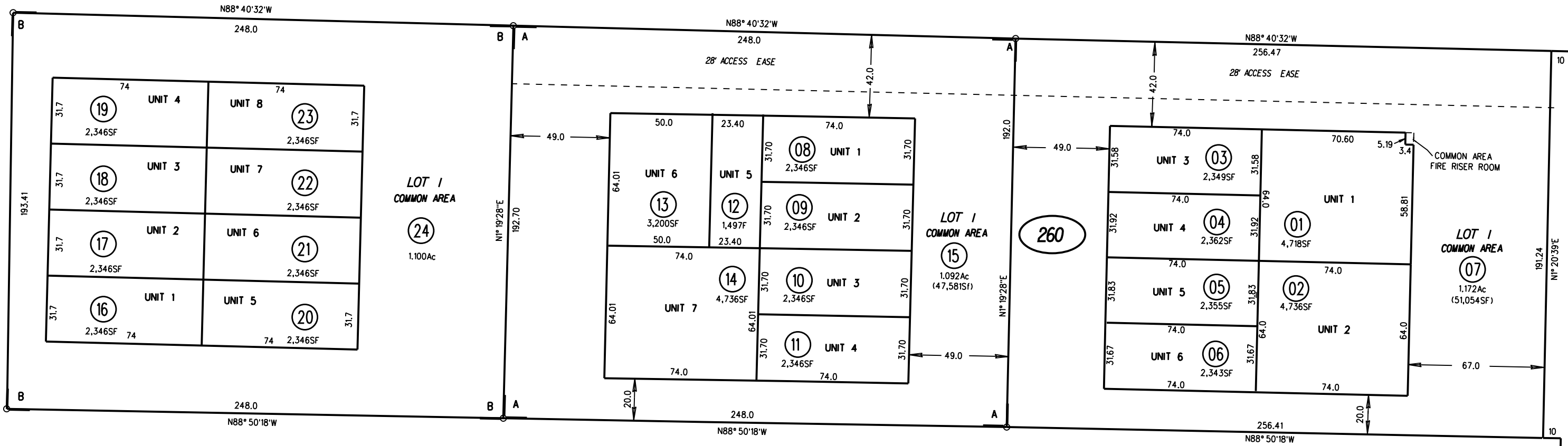


TRACT 9054 MB 499-1 11/6/06 (CENTRAL INDUSTRIAL CENTER CONDOMINIUMS)
 CC&R'S 2006-355731 11/6/06
 A- TRACT 9055 MB 503-43 10/4/07 (CENTRAL INDUSTRIAL CENTER II CONDOS)
 CC&R'S 2007-0286156 10/15/07
 B- TRACT 9056 MB 505-45 10/4/07 (CENTRAL INDUSTRIAL CENTER II CONDOS)
 CC&R'S 2007-0286158 10/15/07

1" = 50'

BROOKSIDE DR

CENTRAL ST



19

260

20

19

260

TR 9056
1/3/24

NOTE: THIS MAP WAS PREPARED FOR ASSESSMENT PURPOSES ONLY. NO LIABILITY IS ASSUMED FOR THE ACCURACY OF THE INFORMATION DELINEATED HEREON. ASSESSOR'S PARCELS MAY NOT COMPLY WITH LOCAL LOT SPLIT OR BUILDING SITE ORDINANCES.