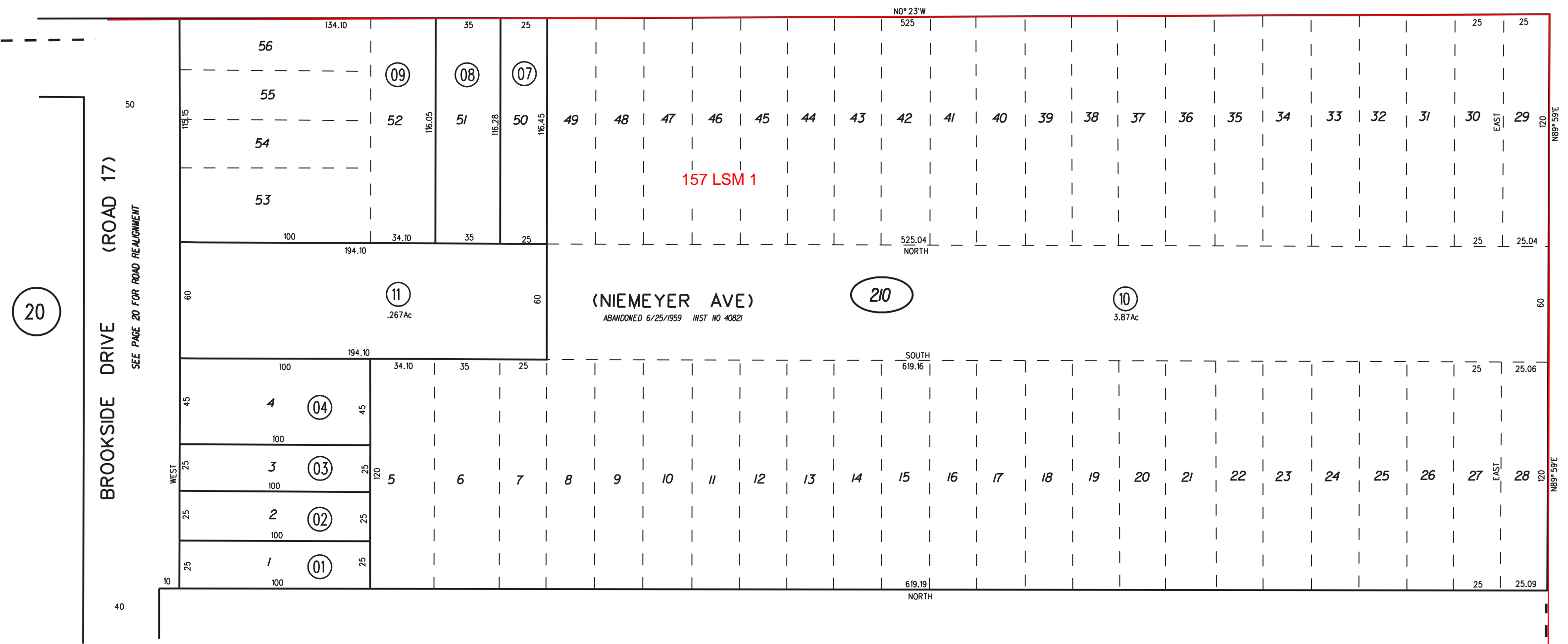


PB  
409



20

210

10  
3.87Ac

11  
.267Ac

(NIEMEYER AVE)  
ABANDONED 6/25/1959 INST NO 40821

BROOKSIDE DRIVE (ROAD 17)  
SEE PAGE 20 FOR ROAD REALIGNMENT

NOTE: THIS MAP WAS PREPARED FOR ASSESSMENT PURPOSES ONLY. NO LIABILITY IS ASSUMED FOR THE ACCURACY OF THE INFORMATION DELINEATED HEREON. ASSESSOR'S PARCELS MAY NOT COMPLY WITH LOCAL LOT SPLIT OR BUILDING SITE ORDINANCES.

20

210

11  
2/23/11