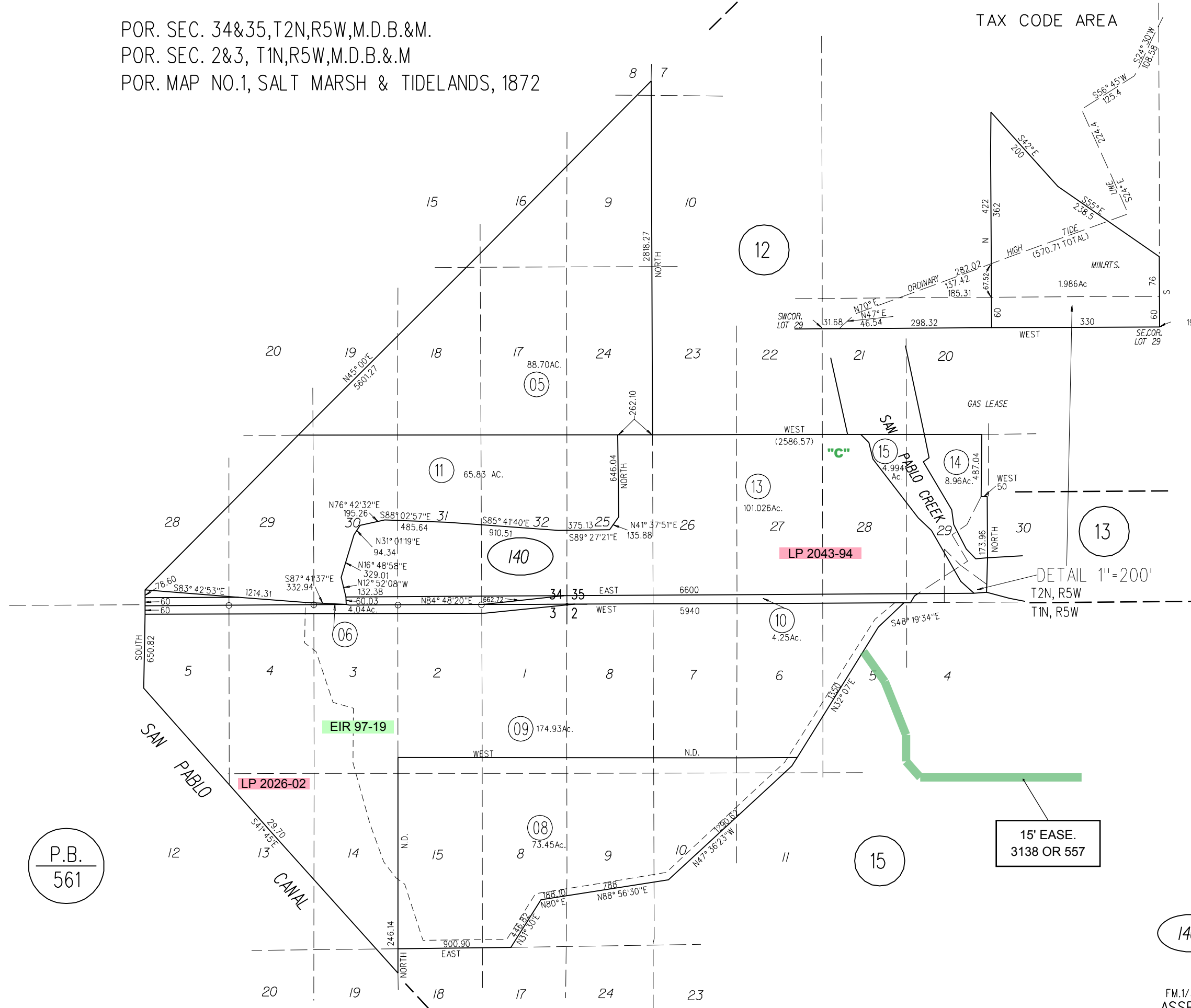


POR. SEC. 34&35, T2N, R5W, M.D.B.&M.
 POR. SEC. 2&3, T1N, R5W, M.D.B.&M.
 POR. MAP NO.1, SALT MARSH & TIDELANDS, 1872

TAX CODE AREA

1" = 800'

SE.COR.
SEC.35



P.B.
561

15' EASE.
3138 OR 557

140

1961 ROLL
 FM.1/34 5-15-90
 ASSESSOR'S MAP
 BOOK 408 PAGE 14