

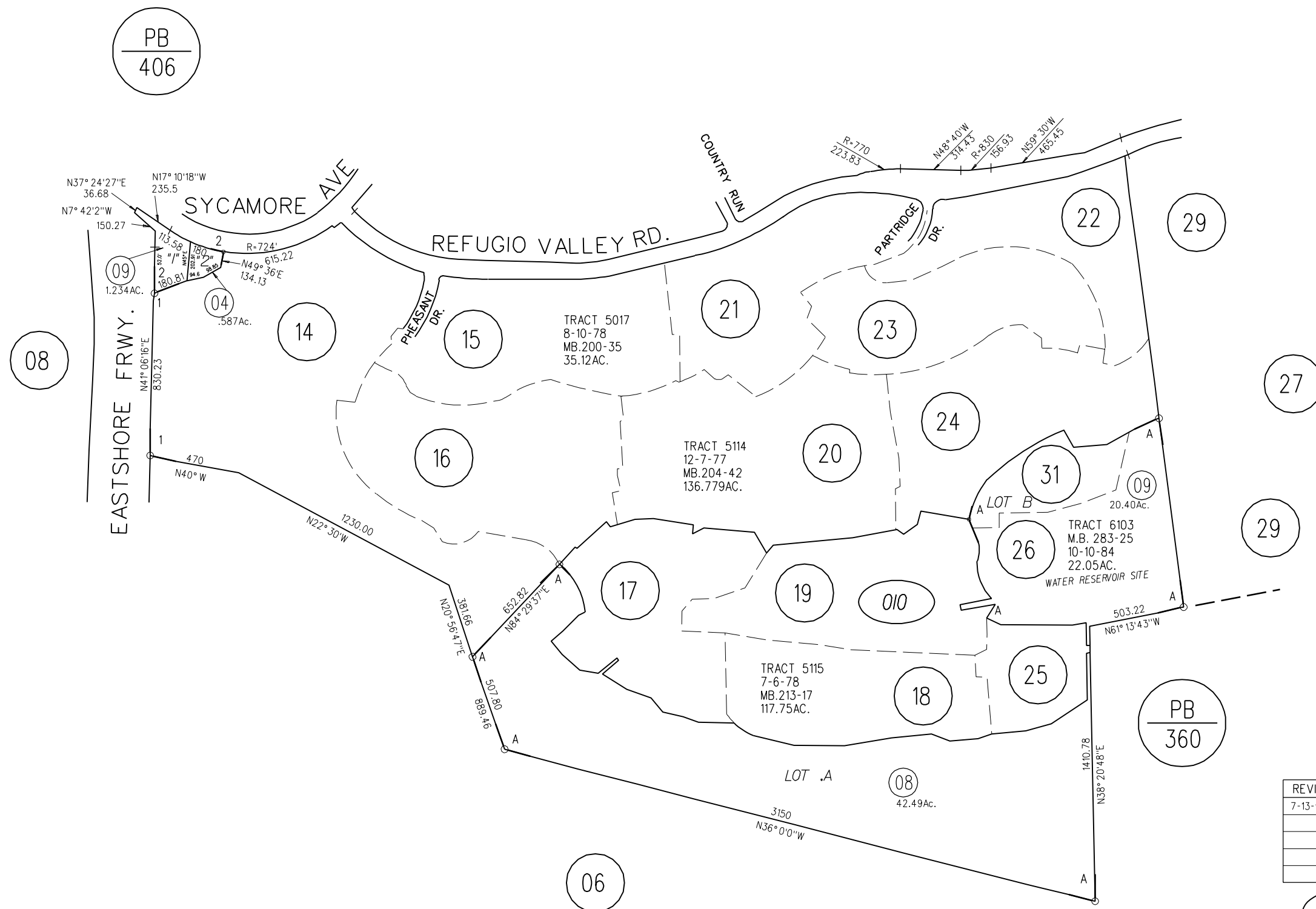
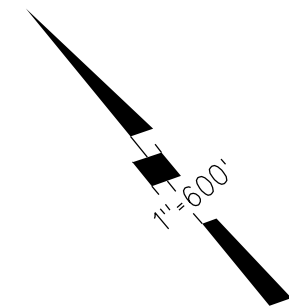
POR. TOWN OF HERCULES

1- 47P.M.25 & 26 6-19-76

2- 57P.M.49 & 50 9-19-77

3- 62P.M. 9 THRU 21 1-19-78

A-1979 ROLL- TRACT 5115 MB 213-17



PB
406

PB
360

REVISED	CHANGE	BY
7-13-94	CRE PCL 9	MJ

010