

CORNER RECORD

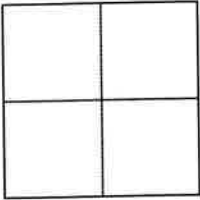
Agency Index 238 CR 44
Document Number 111207
County of CONTRA COSTA, California

City of ORINDA

Brief Legal Description MONUMENT LOCATED WITHIN LAS PIEDRAS
REFERENCE APN: 265-090-027 (163 LSM 47)

CORNER TYPE

COORDINATES (Optional)



- Government Corner
- Meander
- Rancho
- Control
- Property
- Other

N. _____ E. _____
 Elevation _____
 Units Metric U.S. Survey Foot
 Horizontal Datum _____
 Zone _____ Epoch Date _____
 Vertical Datum _____
 Complies with Public Resources Code §§8801-8819
 Complies with Public Resources Code §§8890-8902

Date of Survey 04/01/2022

PLS Act Ref.: 8765 (d) 8771 8773 Other:

Corner/Monument: Left as found Established Rebuilt Pre-Construction
 Found and tagged Reestablished Referenced Post-Construction

Narrative of corner identified and monument as found, set, reset, replaced, or removed:

See sheet #2 for description (s):
FOUND MAG & WASHER STAMPED "LS 5452 HUMANN"

FOUND AND SET POINTS AS SHOWN ON PAGE 2.
 THIS POINT WAS REFERENCED PRIOR TO A CONSTRUCTION PROJECT IN THE VICINITY.
 THE TIES SHOWN HEREON ARE FOR THE PURPOSE OF PERPETUATING FOUND MONUMENTATION. NO CLAIM IS MADE AS TO THE RELATIONSHIP OF THE POINTS OR LINES SHOWN HEREON TO TRUE BOUNDARY LOCATION.
 21051-Las Piedras-CR-33

SURVEYOR'S STATEMENT

This Corner Record was prepared by me or under my direction in conformance with the Professional Land Surveyors' Act on APRIL 04, 2022, 2022.
 Signed [Signature] P.L.S. or R.C.E. No. 8525
SCOTT V. CUNHA



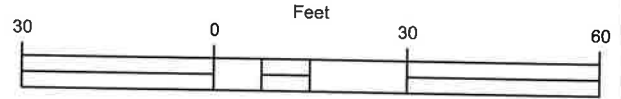
COUNTY SURVEYOR'S STATEMENT

This Corner Record was received April 13, 2022
 and examined and filed October 10, 2022.
 Signed Dana M. Trezise P.L.S. or R.C.E. No. 7438
 Title Interim County Surveyor
 County Surveyor's Comment _____



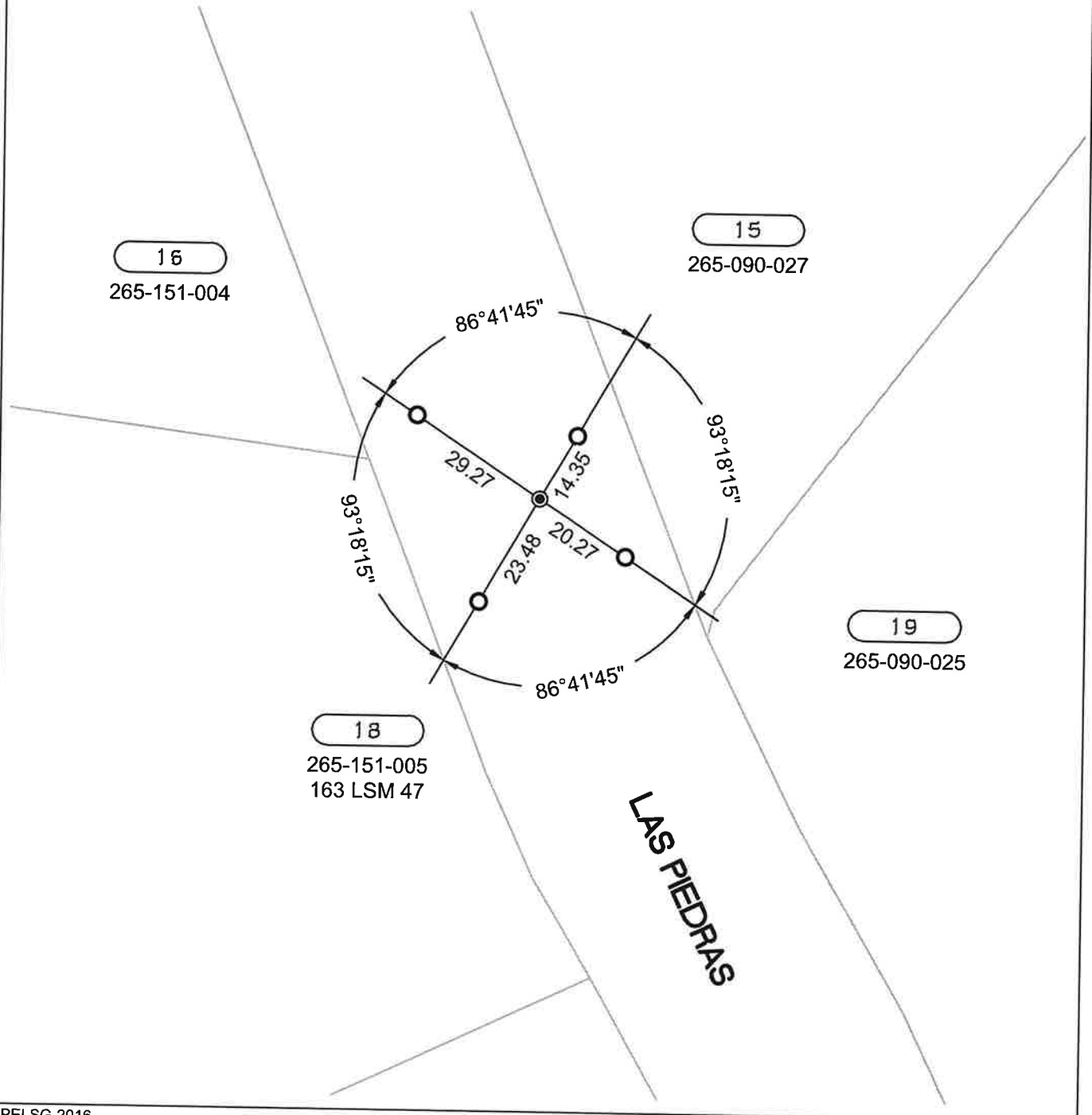
LEGEND

- FOUND MAG & WASHER "LS 5452 HUMANN"
- SET REBAR & CAP "CUNHA RP"
- 5289 REFERENCE STREET ADDRESS



ALL MEASUREMENTS IN US SURVEY FEET AND DECIMAL THEREOF

SCALE: 1" = 30'



16
265-151-004

15
265-090-027

19
265-090-025

18
265-151-005
163 LSM 47

LAS PIEDRAS