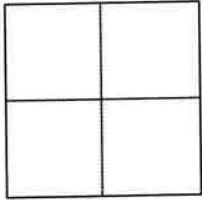


CORNER RECORD

Agency Index 238 CR 41
Document Number CR 11204
County of CONTRA COSTA, California

City of ORINDA

Brief Legal Description MONUMENT LOCATED WITHIN LOMAS CANTADAS
REF APN: 265-100-004 137 LSM 12



- CORNER TYPE
- Government Corner Control
 Meander Property
 Rancho Other

Date of Survey 03/18/2022

COORDINATES (Optional)

N. _____ E. _____
Elevation _____
Units Metric U.S. Survey Foot
Horizontal Datum _____
Zone _____ Epoch Date _____
Vertical Datum _____
 Complies with Public Resources Code §§8801-8819
 Complies with Public Resources Code §§8890-8902

PLS Act Ref.: 8765 (d) 8771 8773 Other:

Corner/ Monument: Left as found Established Rebuilt Pre-Construction
 Found and tagged Reestablished Referenced Post-Construction

Narrative of corner identified and monument as found, set, reset, replaced, or removed:
 See sheet #2 for description (s):
FOUND NAIL AND TAG "LS 7136"

FOUND AND SET POINTS AS SHOWN ON PAGE 2.
THIS POINT WAS REFERENCED PRIOR TO A CONSTRUCTION PROJECT IN THE VICINITY.
THE TIES SHOWN HEREON ARE FOR THE PURPOSE OF PERPETUATING FOUND MONUMENTATION. NO CLAIM IS MADE AS TO THE RELATIONSHIP OF THE POINTS OR LINES SHOWN HEREON TO TRUE BOUNDARY LOCATION.
21051-Lomas Cantadas-CR-02

SURVEYOR'S STATEMENT

This Corner Record was prepared by me or under my direction in conformance with
the Professional Land Surveyors' Act on MARCH 25, 2022
Signed *Scott V. Cunha* P.L.S. or R.C.E. No. 8525
SCOTT V. CUNHA



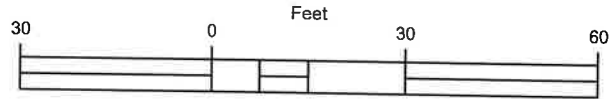
COUNTY SURVEYOR'S STATEMENT

This Corner Record was received 4.13.2022
and examined and filed October 10, 2022
Signed *Dana M. Trezise* P.L.S. or R.C.E. No. 7438
Title *Interim County Surveyor*
County Surveyor's Comment _____



LEGEND

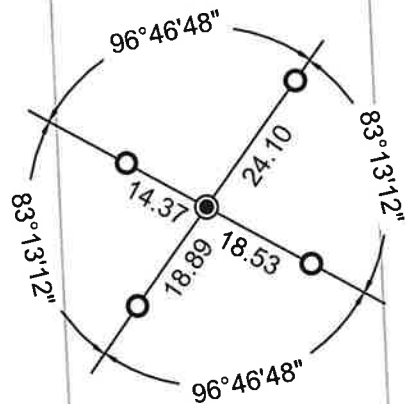
- FOUND NAIL AND TAG LS 7136
- SET REBAR & CAP "RP LS 8525"
- 5289 REFERENCE STREET ADDRESS



SCALE: 1" = 30'

ALL MEASUREMENTS IN U.S. SURVEY FEET AND DECIMAL THEREOF

6
DEL VALLE
265-140-006



5
265-100-005

7
265-100-004
137 LSM 12

LOMAS CANTADAS