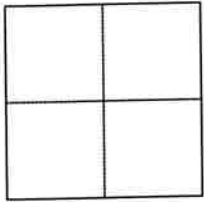


# CORNER RECORD

Agency Index 238 CR 20  
Document Number 11183  
County of CONTRA COSTA, California

City of ORINDA

Brief Legal Description MONUMENT WELL LOCATED WITHIN RHEEM BLVD  
REFERENCE APN: 270-132-007, MAP OF RHEEM HIGHLANDS (35 M 38)



- CORNER TYPE
- Government Corner       Control  
 Meander                       Property  
 Rancho                             Other

COORDINATES (Optional)

N. \_\_\_\_\_ E. \_\_\_\_\_  
 Elevation \_\_\_\_\_  
 Units  Metric  U.S. Survey Foot  
 Horizontal Datum \_\_\_\_\_  
 Zone \_\_\_\_\_ Epoch Date \_\_\_\_\_  
 Vertical Datum \_\_\_\_\_  
 Complies with Public Resources Code §§8801-8819  
 Complies with Public Resources Code §§8890-8902

Date of Survey 03/31/2022

PLS Act Ref.:  8765 (d)       8771       8773       Other:

Corner/ Monument:  Left as found       Established       Rebuilt       Pre-Construction  
 Found and tagged       Reestablished       Referenced       Post-Construction

Narrative of corner identified and monument as found, set, reset, replaced, or removed:

See sheet #2 for description (s):  
**FOUND 1.5" BRASS DISK WITH PUNCH IN MONUMENT WELL.**  
**MONUMENT BURIED: LID 0.2' BELOW GRADE, DISK 1.6' BELOW LID. EXCAVATED PRIOR TO REFERENCING.**  
 FOUND AND SET POINTS AS SHOWN ON PAGE 2.  
 THIS POINT WAS REFERENCED PRIOR TO A CONSTRUCTION PROJECT IN THE VICINITY.  
 THE TIES SHOWN HEREON ARE FOR THE PURPOSE OF PERPETUATING FOUND MONUMENTATION. NO CLAIM IS MADE AS TO THE RELATIONSHIP OF THE POINTS OR LINES SHOWN HEREON TO TRUE BOUNDARY LOCATION.  
 21051-Rheem Blvd-CR-23

### SURVEYOR'S STATEMENT

This Corner Record was prepared by me or under my direction in conformance with  
 the Professional Land Surveyors' Act on APRIL 05, 2022.  
 Signed *Scott V. Cunha* P.L.S. or R.C.E. No. 8525  
SCOTT V. CUNHA



### COUNTY SURVEYOR'S STATEMENT

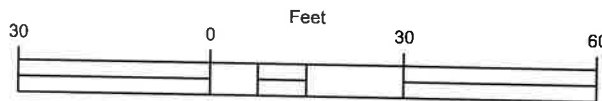
This Corner Record was received 4.13.2022  
 and examined and filed 10.10.2022  
 Signed *Dana M. Trejise* P.L.S. or R.C.E. No. 7438  
 Title *Interim County Surveyor*  
 County Surveyor's Comment \_\_\_\_\_



### LEGEND

- FOUND 1.5" BRASS DISK WITH PUNCH IN MONUMENT WELL
- ✕ SET CUT CROSS IN CONCRETE
- ⊗ SET MAG NAIL AND WASHER "CUNHA RP"
- SET REBAR & CAP "CUNHA RP"
- 5289 REFERENCE STREET ADDRESS

SCALE: 1"=30'

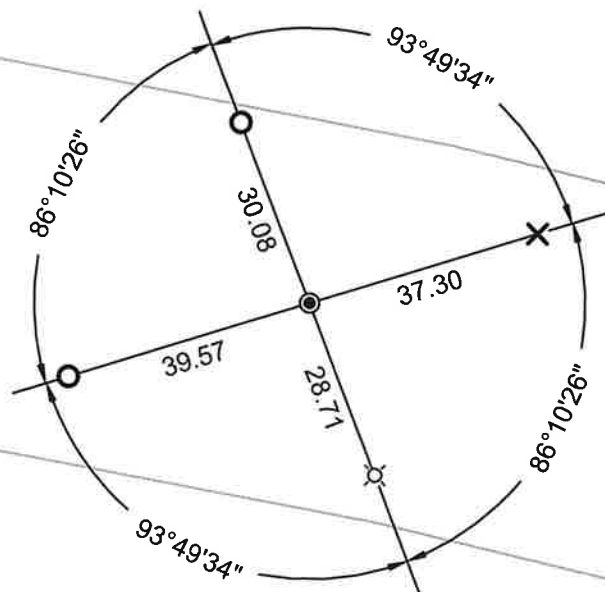


ALL MEASUREMENTS IN US SURVEY FEET AND DECIMAL THEREOF

SCALE: 1" = 30'

103  
270-132-008  
PORTION  
LOTS 60 & 61  
35 M 38

105  
270-132-007  
PORTION  
LOTS 59 & 60  
35 M 38



RHEEM BLVD

106  
270-131-015  
PARCEL A  
46 PM 18