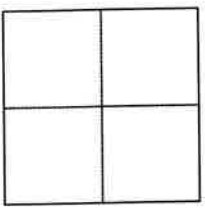


CORNER RECORD

Agency Index 238 CR 18
Document Number 11181
County of CONTRA COSTA, California

City of ORINDA

Brief Legal Description MONUMENT WELL LOCATED WITHIN RHEEM BLVD
REFERENCE APN: 270-132-003, MAP OF RHEEM HIGHLANDS (35 M 38)



CORNER TYPE
 Government Corner
 Meander
 Rancho
 Control
 Property
 Other

COORDINATES (Optional)
N. _____ E. _____
Elevation _____
Units Metric U.S. Survey Foot
Horizontal Datum _____
Zone _____ Epoch Date _____
Vertical Datum _____
 Complies with Public Resources Code §§8801-8819
 Complies with Public Resources Code §§8890-8902

Date of Survey 04/01/2022

PLS Act Ref.: 8765 (d) 8771 8773 Other:
Corner/Monument: Left as found Established Rebuilt Pre-Construction
 Found and tagged Reestablished Referenced Post-Construction

Narrative of corner identified and monument as found, set, reset, replaced, or removed:
 See sheet #2 for description (s):
FOUND 1.5" BRASS DISK WITH PUNCH IN MONUMENT WELL, NO LID. STAMPED "CCCO RH 27"
MONUMENT BURIED: RIM 0.75' BELOW GRADE, DISK 1.35' BELOW RIM. EXCAVATED PRIOR TO REFERENCING.

FOUND AND SET POINTS AS SHOWN ON PAGE 2.
THIS POINT WAS REFERENCED PRIOR TO A CONSTRUCTION PROJECT IN THE VICINITY.
THE TIES SHOWN HEREON ARE FOR THE PURPOSE OF PERPETUATING FOUND MONUMENTATION. NO CLAIM IS MADE AS TO THE RELATIONSHIP OF THE POINTS OR LINES SHOWN HEREON TO TRUE BOUNDARY LOCATION.
21051-Rheem Blvd-CR-29

SURVEYOR'S STATEMENT

This Corner Record was prepared by me or under my direction in conformance with the Professional Land Surveyors' Act on APRIL 05, 2022.
Signed [Signature] P.L.S. or R.C.E. No. 8525
SCOTT V. CUNHA



COUNTY SURVEYOR'S STATEMENT

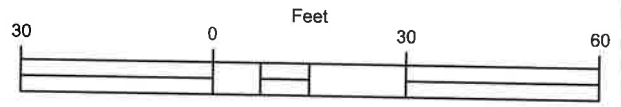
This Corner Record was received April 13, 2022
and examined and filed October 5, 2022.
Signed Dana M. Trejise P.L.S. or R.C.E. No. 7438
Title Interim County Surveyor
County Surveyor's Comment _____





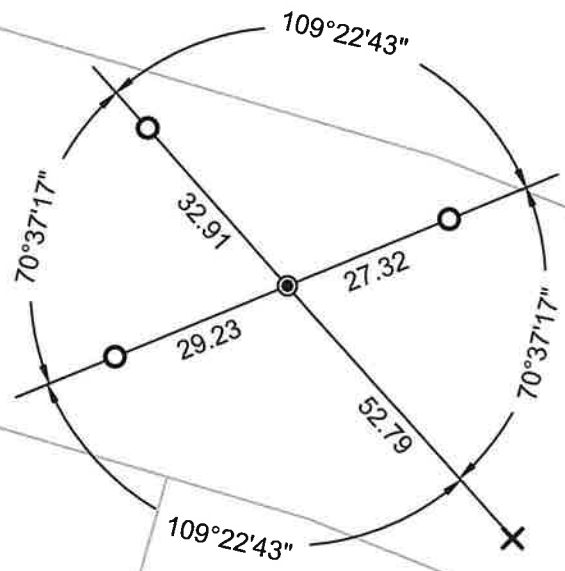
LEGEND

- FOUND 1.5" BRASS DISK WITH PUNCH IN MONUMENT WELL
- ✕ SET CUT CROSS IN CONCRETE
- SET REBAR & CAP "CUNHA RP"
- (5289) REFERENCE STREET ADDRESS



ALL MEASUREMENTS IN US SURVEY FEET AND DECIMAL THEREOF SCALE: 1" = 30'

PORTION
 LOTS 56 & 57
 35 M 38
 (117)
 270-132-003



RHEEM BLVD

(9)
 LIND CT
 270-131-013
 PORTION
 LOT 40
 35 M 38

(120)
 270-131-012
 LOT 41
 35 M 38