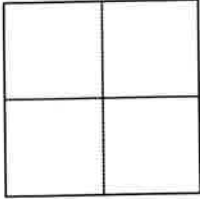


# CORNER RECORD

Agency Index 238 CR 15  
Document Number 11178  
County of CONTRA COSTA, California

City of ORINDA

Brief Legal Description WELL MONUMENT LOCATED WITHIN ST. STEPHENS DRIVE  
REFERENCE APN: 260-151-006, TRACT 2065 (57 M 21)



### CORNER TYPE

- Government Corner
- Meander
- Rancho
- Control
- Property
- Other

Date of Survey 03/08/2022

### COORDINATES (Optional)

N. \_\_\_\_\_ E. \_\_\_\_\_  
Elevation \_\_\_\_\_  
Units  Metric  U.S. Survey Foot  
Horizontal Datum \_\_\_\_\_  
Zone \_\_\_\_\_ Epoch Date \_\_\_\_\_  
Vertical Datum \_\_\_\_\_  
 Complies with Public Resources Code §§8801-8819  
 Complies with Public Resources Code §§8890-8902

PLS Act Ref.:  8765 (d)  8771  8773  Other:

Corner/Monument:  Left as found  Established  Rebuilt  Pre-Construction  
 Found and tagged  Reestablished  Referenced  Post-Construction

Narrative of corner identified and monument as found, set, reset, replaced, or removed:

- See sheet #2 for description (s):
- FOUND 1.25" BRASS DISK WITH PUNCH IN MONUMENT WELL.

FOUND AND SET POINTS AS SHOWN ON PAGE 2.  
THIS POINT WAS REFERENCED PRIOR TO A CONSTRUCTION PROJECT IN THE VICINITY.  
THE TIES SHOWN HEREON ARE FOR THE PURPOSE OF PERPETUATING FOUND MONUMENTATION. NO CLAIM IS MADE AS TO THE RELATIONSHIP OF THE POINTS OR LINES SHOWN HEREON TO TRUE BOUNDARY LOCATION.  
21051-St Stephens Dr-CR-03

### SURVEYOR'S STATEMENT

This Corner Record was prepared by me or under my direction in conformance with the Professional Land Surveyors' Act on MARCH 24, 2022.  
Signed *Scott V. Cunha* P.L.S. or R.C.E. No. 8525  
SCOTT V. CUNHA



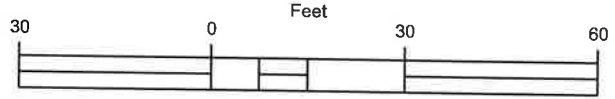
### COUNTY SURVEYOR'S STATEMENT

This Corner Record was received April 13, 2022  
and examined and filed October 5, 2022.  
Signed *Dana M. Trejise* P.L.S. or R.C.E. No. 7438  
Title Interim County Surveyor  
County Surveyor's Comment \_\_\_\_\_



### LEGEND

- FOUND 1.25" BRASS DISK WITH PUNCH IN MONUMENT WELL
- ✕ SET CUT CROSS IN CONCRETE
- ⊗ SET MAG NAIL AND WASHER "CUNHA RP"
- ⊗ SET REBAR & CAP WITH TACK "CUNHA RP"
- (5289) REFERENCE STREET ADDRESS



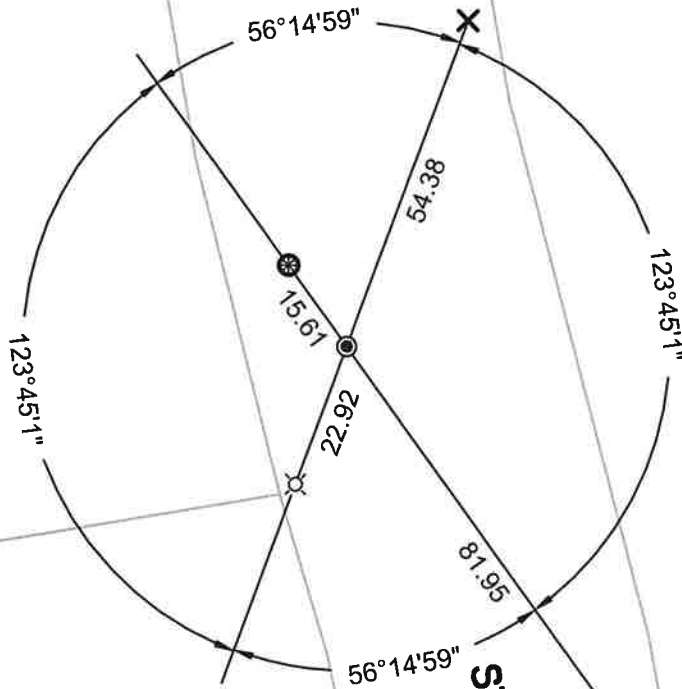
ALL MEASUREMENTS IN US SURVEY FEET AND DECIMAL THEREOF

SCALE: 1" = 30'

(15)  
 260-153-018  
 PORTION  
 LOTS 15 & 16  
 57 M 21

(14)  
 260-151-006  
 LOT 4 &  
 PORTION LOT 5  
 57 M 21

(11)  
 260-153-006  
 LOT 17  
 57 M 21



ST STEPHENS DR