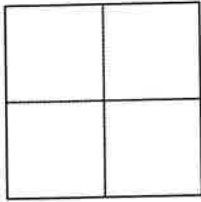


CORNER RECORD

Agency Index 238 CR 12
Document Number 11175
County of CONTRA COSTA, California

City of ORINDA

Brief Legal Description WELL MONUMENT LOCATED WITHIN ST. STEPHENS DRIVE
REFERENCE APN: 260-151-010, TRACT 2065 (57 M 21)



- CORNER TYPE
- Government Corner Control
 Meander Property
 Rancho Other

Date of Survey 03/09/2022

COORDINATES (Optional)

N. _____ E. _____
Elevation _____
Units Metric U.S. Survey Foot
Horizontal Datum _____
Zone _____ Epoch Date _____
Vertical Datum _____
 Complies with Public Resources Code §§8801-8819
 Complies with Public Resources Code §§8890-8902

PLS Act Ref.: 8765 (d) 8771 8773 Other:

Corner/Monument: Left as found Established Rebuilt Pre-Construction
 Found and tagged Reestablished Referenced Post-Construction

Narrative of corner identified and monument as found, set, reset, replaced, or removed:

See sheet #2 for description (s):
FOUND 1.25" BRASS DISK WITH PUNCH IN MONUMENT WELL.

FOUND AND SET POINTS AS SHOWN ON PAGE 2.
THIS POINT WAS REFERENCED PRIOR TO A CONSTRUCTION PROJECT IN THE VICINITY.
THE TIES SHOWN HEREON ARE FOR THE PURPOSE OF PERPETUATING FOUND MONUMENTATION. NO CLAIM IS MADE AS TO THE RELATIONSHIP OF THE POINTS OR LINES SHOWN HEREON TO TRUE BOUNDARY LOCATION.
21051-St Stephens Dr-CR-06

SURVEYOR'S STATEMENT

This Corner Record was prepared by me or under my direction in conformance with
the Professional Land Surveyors' Act on MARCH 24, 2022.
Signed *Scott V. Cunha* P.L.S. or R.C.E. No. 8525
SCOTT V. CUNHA



COUNTY SURVEYOR'S STATEMENT

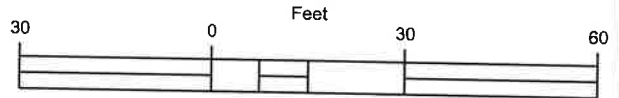
This Corner Record was received April 13, 2022
and examined and filed October 5, 2022.
Signed *Dana M. Trezise* P.L.S. or R.C.E. No. 7438
Title Interim County Surveyor
County Surveyor's Comment _____





LEGEND

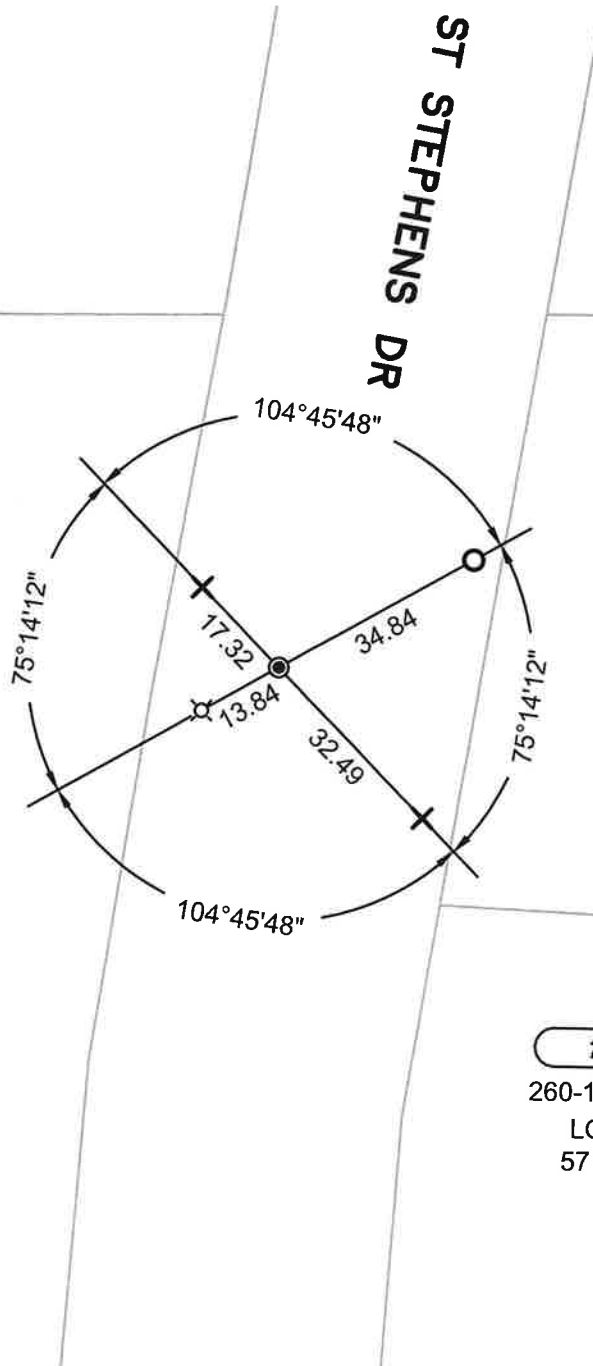
- FOUND 1.25" BRASS DISK WITH PUNCH IN MONUMENT WELL
- ✕ SET CUT CROSS IN CONCRETE
- ⊗ SET MAG NAIL AND WASHER "CUNHA RP"
- SET REBAR & CAP "CUNHA RP"
- (5289) REFERENCE STREET ADDRESS



ALL MEASUREMENTS IN US SURVEY FEET AND DECIMAL THEREOF

SCALE 1" = 30'

260-152-004
 PORTION
 LOTS 9 & 10
 57 M 21



(30)
 260-151-010
 LOT 8
 57 M 21

(26)
 260-151-020
 LOT 7
 57 M 21