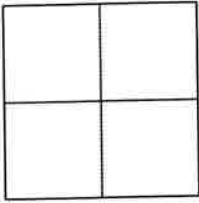


# CORNER RECORD

Agency Index 238 028  
Document Number 11171  
County of CONTRA COSTA, California

City of ORINDA

Brief Legal Description WELL MONUMENT LOCATED WITHIN ST. STEPHENS DRIVE  
REFERENCE APN: 260-120-009 TRACT 2333 (62 M 32)



- CORNER TYPE
- Government Corner       Control
- Meander                       Property
- Rancho                          Other

Date of Survey 03/16/2022

COORDINATES (Optional)

N. \_\_\_\_\_ E. \_\_\_\_\_

Elevation \_\_\_\_\_

Units  Metric                       U.S. Survey Foot

Horizontal Datum \_\_\_\_\_

Zone \_\_\_\_\_ Epoch Date \_\_\_\_\_

Vertical Datum \_\_\_\_\_

Complies with Public Resources Code §§8801-8819

Complies with Public Resources Code §§8890-8902

PLS Act Ref.:  8765 (d)       8771                       8773                       Other: \_\_\_\_\_

Corner/Monument:  Left as found       Established                       Rebuilt                       Pre-Construction

Found and tagged       Reestablished                       Referenced                       Post-Construction

Narrative of corner identified and monument as found, set, reset, replaced, or removed:

See sheet #2 for description (s):  
FOUND 1.25" BRASS DISK WITH PUNCH IN MONUMENT WELL.

FOUND AND SET POINTS AS SHOWN ON PAGE 2.  
THIS POINT WAS REFERENCED PRIOR TO A CONSTRUCTION PROJECT IN THE VICINITY.  
THE TIES SHOWN HEREON ARE FOR THE PURPOSE OF PERPETUATING FOUND MONUMENTATION. NO CLAIM IS MADE AS TO THE RELATIONSHIP OF THE POINTS OR LINES SHOWN HEREON TO TRUE BOUNDARY LOCATION.  
21051-St Stephens Dr-CR-11

### SURVEYOR'S STATEMENT

This Corner Record was prepared by me or under my direction in conformance with the Professional Land Surveyors' Act on MARCH 25, 2022.

Signed *Scott V. Cunha* P.L.S. or R.C.E. No. 8525

**SCOTT V. CUNHA**



### COUNTY SURVEYOR'S STATEMENT

This Corner Record was received April 13, 2022  
and examined and filed October 5, 2022.

Signed *Dana M. Trezise* P.L.S. or R.C.E. No. 7438

Title Interim County Surveyor

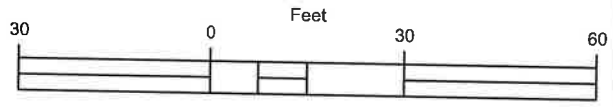
County Surveyor's Comment \_\_\_\_\_



### LEGEND

- FOUND 1.25" BRASS DISK WITH PUNCH IN MONUMENT WELL
- ✕ SET CUT CROSS IN CONCRETE
- ⊗ SET MAG NAIL AND WASHER "CUNHA RP"
- (5289) REFERENCE STREET ADDRESS

SCALE: 1"=30'



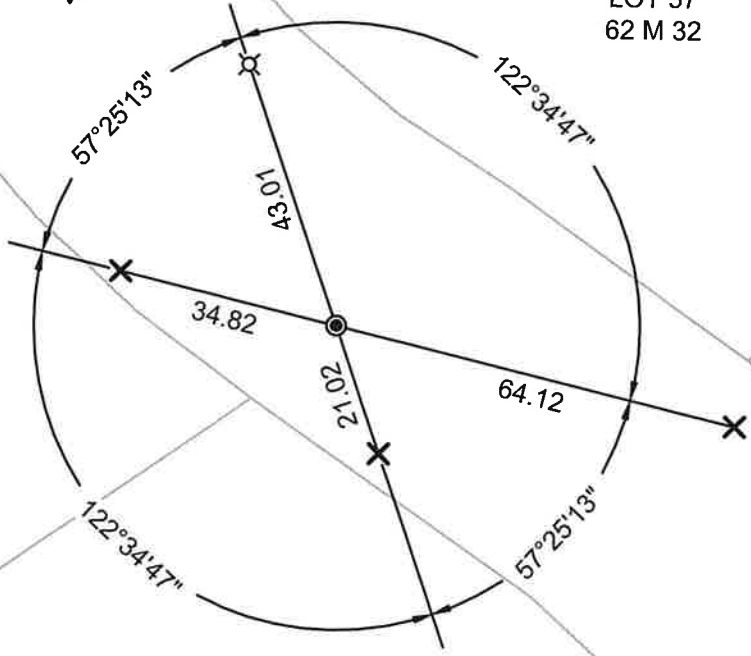
ALL MEASUREMENTS IN US SURVEY FEET AND DECIMAL THEREOF SCALE 1" = 30'

ST STEPHENS DR

58

260-120-009

LOT 57  
62 M 32



51

260-131-024

PORTION LOTS  
60 & 61  
62 M 32

47

260-131-005

LOT 62  
62 M 32