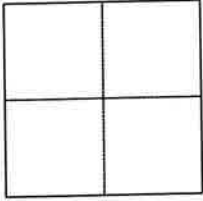


CORNER RECORD

Agency Index 238 CR 4
Document Number 11167
County of CONTRA COSTA, California

City of ORINDA

Brief Legal Description WELL MONUMENT LOCATED WITHIN WILDER RD
REFERENCE APN: 273-160-009 (507 M 11)



- CORNER TYPE
- Government Corner
 - Meander
 - Rancho
 - Control
 - Property
 - Other

Date of Survey 03/08/2022

COORDINATES (Optional)

N. _____ E. _____

Elevation _____

Units Metric U.S. Survey Foot

Horizontal Datum _____

Zone _____ Epoch Date _____

Vertical Datum _____

Complies with Public Resources Code §§8801-8819

Complies with Public Resources Code §§8890-8902

PLS Act Ref.: 8765 (d) 8771 8773 Other:

Corner/Monument: Left as found Established Rebuilt Pre-Construction

Found and tagged Reestablished Referenced Post-Construction

Narrative of corner identified and monument as found, set, reset, replaced, or removed:

See sheet #2 for description (s):

FOUND 2.5" BRASS DISK WITH PUNCH IN MONUMENT WELL. STAMPED RCE 29851. (2013-90172445) CERTIFICATE OF CORRECTION RECORDED FOR 507 M 11. FOUND AND SET POINTS AS SHOWN ON PAGE 2.

THIS POINT WAS REFERENCED PRIOR TO A CONSTRUCTION PROJECT IN THE VICINITY. THE TIES SHOWN HEREON ARE FOR THE PURPOSE OF PERPETUATING FOUND MONUMENTATION. NO CLAIM IS MADE AS TO THE RELATIONSHIP OF THE POINTS OR LINES SHOWN HEREON TO TRUE BOUNDARY LOCATION. OPPOSING REFERENCE POINTS ARE COLLINEAR WITH MONUMENT UNLESS OTHERWISE NOTED.

21051-Wilder Rd-CR-02

SURVEYOR'S STATEMENT

This Corner Record was prepared by me or under my direction in conformance with the Professional Land Surveyors' Act on MARCH 15, 2022.

Signed *Scott V. Cunha* P.L.S. or R.C.E. No. 8525

SCOTT V. CUNHA



COUNTY SURVEYOR'S STATEMENT

This Corner Record was received April 13, 2022 and examined and filed October 5, 2022.

Signed *Dana M. Trejise* P.L.S. or R.C.E. No. 7438

Title Interim County Surveyor

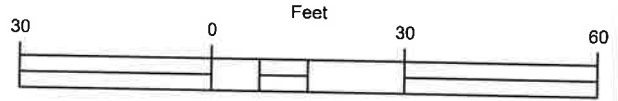
County Surveyor's Comment _____



SCALE: 1"=30'

LEGEND

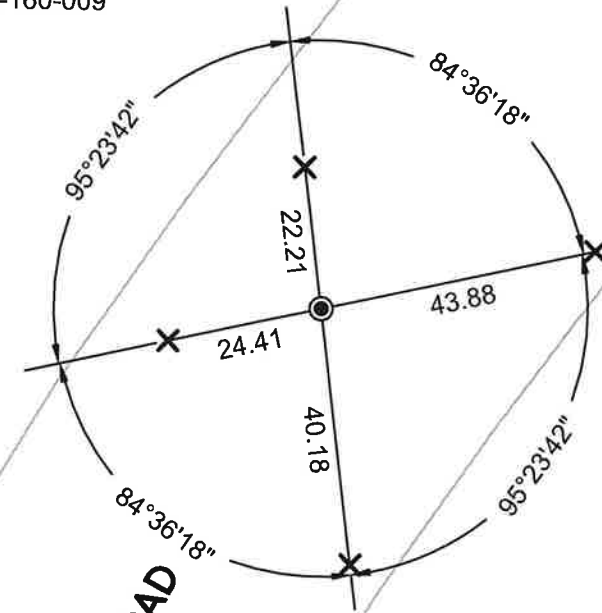
- FOUND 2.5" BRASS DISK WITH PUNCH
- ✕ SET CUT CROSS IN CURB
- (5289) REFERENCE STREET ADDRESS



ALL MEASUREMENTS IN US SURVEY FEET AND DECIMAL THEREOF

SCALE: 1" = 30'

(1)
273-160-009



273-160-019

WILDER ROAD
± 200LF TO
GATEWAY BLVD