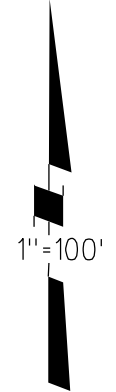
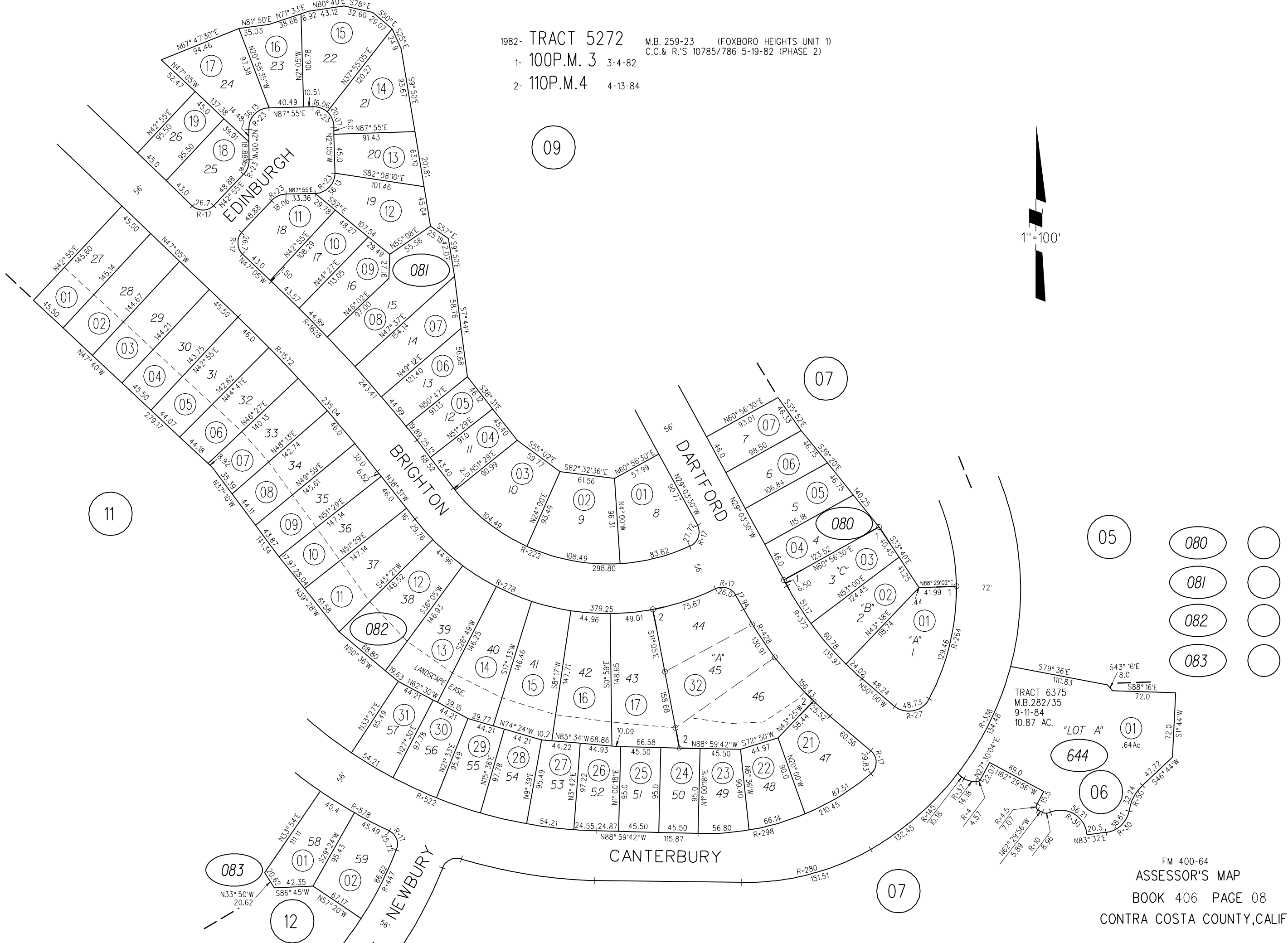


1982- TRACT 5272 M.B. 259-23 (FOXBORO HEIGHTS UNIT 1)
 1- 100P.M. 3 3-4-82 C.C. & R.'S 10785/786 5-19-82 (PHASE 2)
 2- 110P.M. 4 4-13-84



09

09



11

07

05

- 080
- 081
- 082
- 083

TRACT 6375
 M.B. 282/35
 9-11-84
 10.87 AC.
 "LOT A"
 01 .64 Ac
 644
 06

07