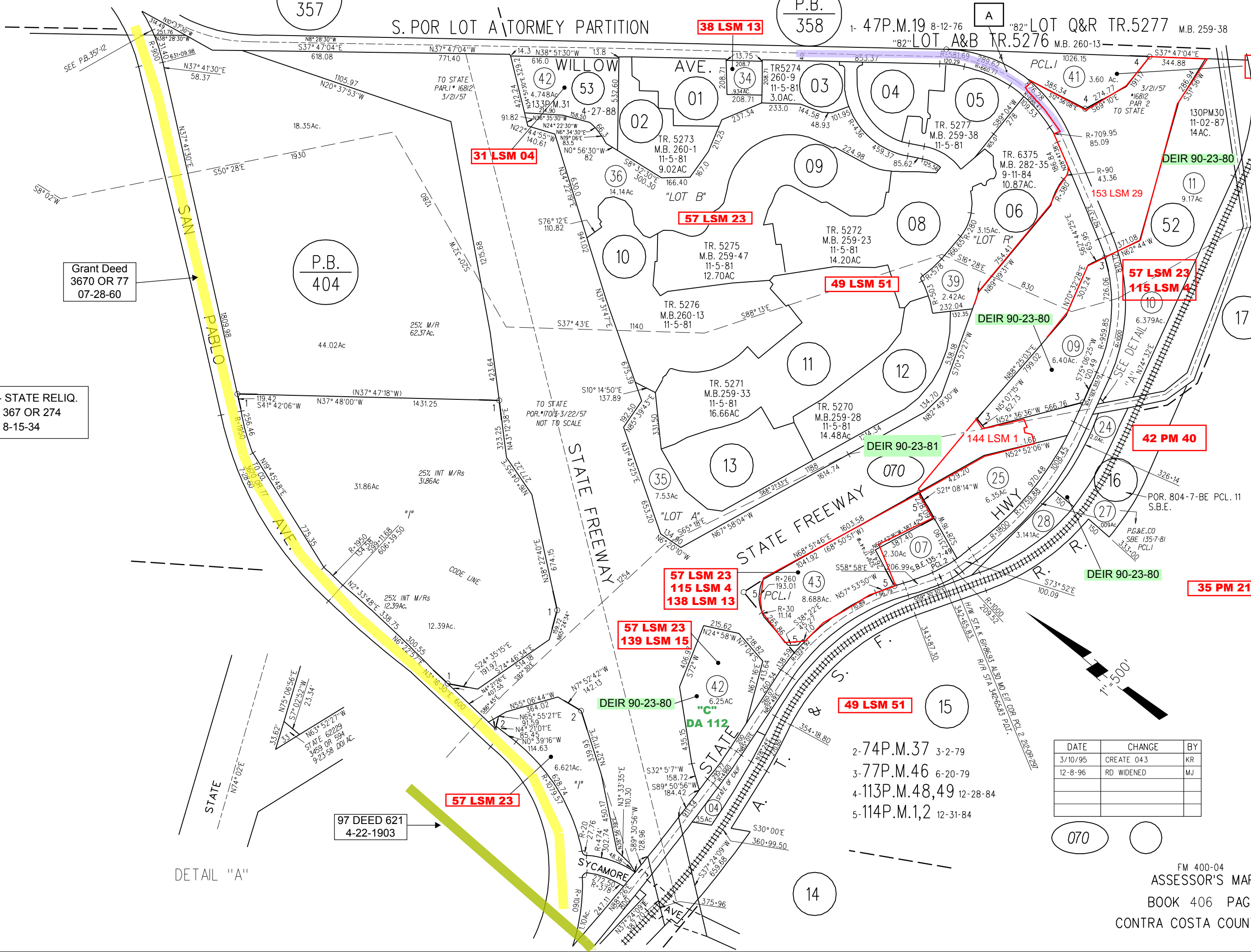


S. POR LOT A TORMEY PARTITION

P.B. 358

1- 47P.M.19 8-12-76

"82" LOT Q&R TR.5277 M.B. 259-38  
"82" LOT A&B TR.5276 M.B. 260-13



Grant Deed  
3670 OR 77  
07-28-60

A - STATE RELIQ.  
367 OR 274  
8-15-34

P.B.  
404

97 DEED 621  
4-22-1903

DETAIL "A"

DATE	CHANGE	BY
3/10/95	CREATE 043	KR
12-8-96	RD WIDENED	MJ



- 2- 74P.M.37 3-2-79
- 3- 77P.M.46 6-20-79
- 4- 113P.M.48,49 12-28-84
- 5- 114P.M.1,2 12-31-84