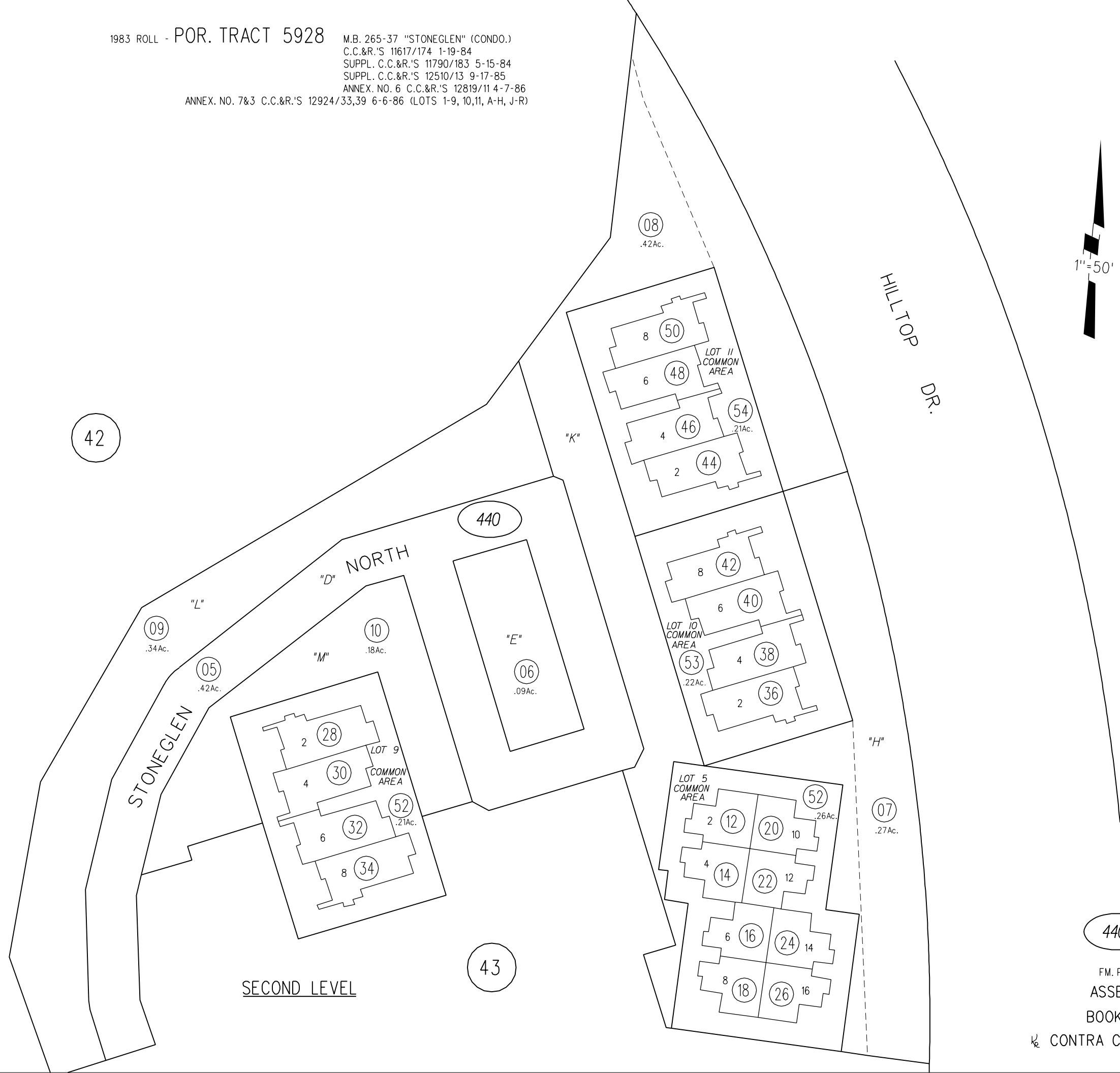


1983 ROLL - POR. TRACT 5928 M.B. 265-37 "STONEGLEN" (CONDO.)  
 C.C.&R.'S 11617/174 1-19-84  
 SUPPL. C.C.&R.'S 11790/183 5-15-84  
 SUPPL. C.C.&R.'S 12510/13 9-17-85  
 ANNEX. NO. 6 C.C.&R.'S 12819/11 4-7-86  
 ANNEX. NO. 7&3 C.C.&R.'S 12924/33,39 6-6-86 (LOTS 1-9, 10,11, A-H, J-R)



42

37

440

440

○

43

SECOND LEVEL