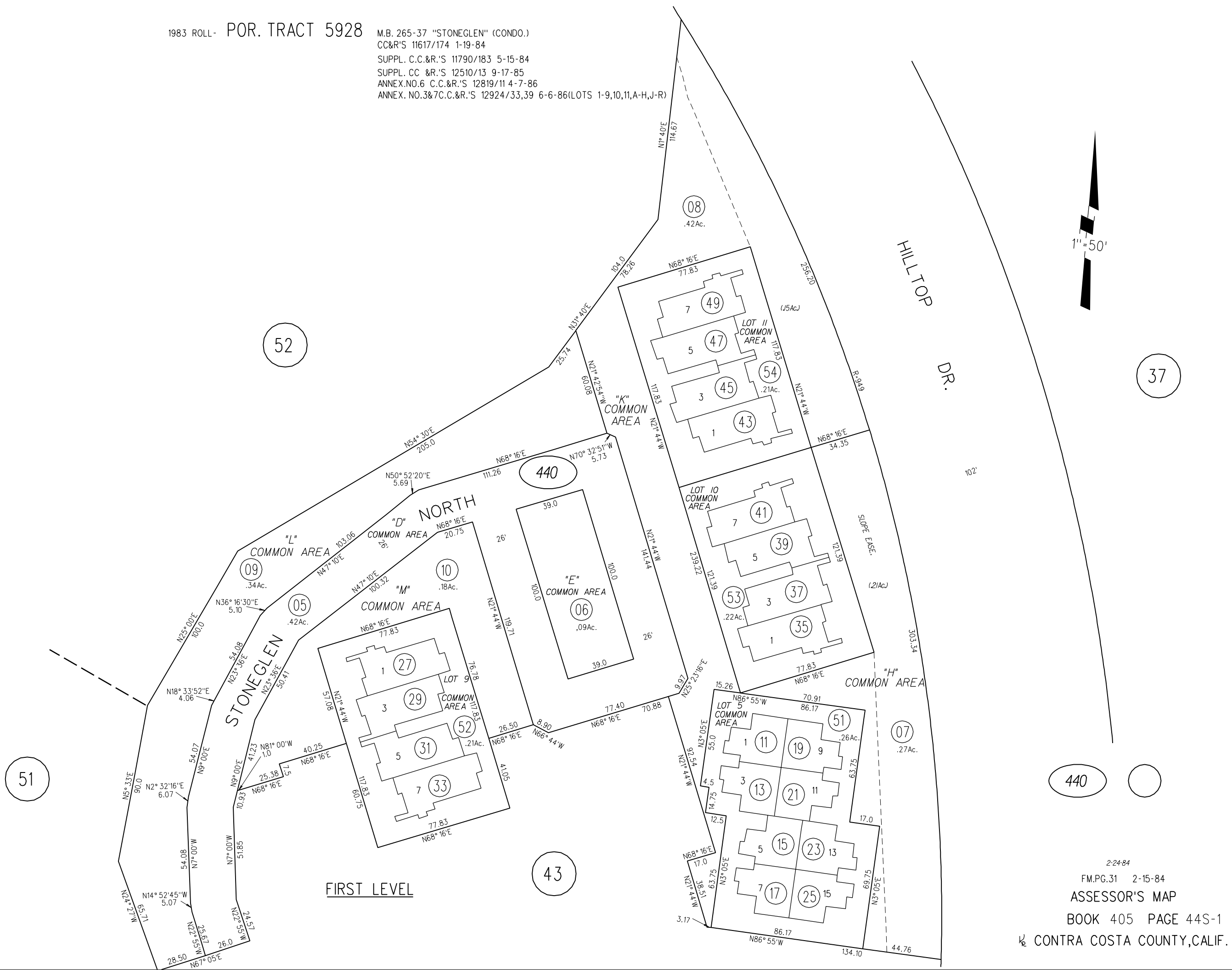


M.B. 265-37 "STONEGLEN" (CONDO.)
CC&R'S 11617/174 1-19-84
SUPPL. C.C.&R.'S 11790/183 5-15-84
SUPPL. CC &R.'S 12510/13 9-17-85
ANNEX.NO.6 C.C.&R.'S 12819/11 4-7-86
ANNEX. NO.3&7C.C.&R.'S 12924/33,39 6-6-86(LOTS 1-9,10,11,A-H,J-R)



1"=50'