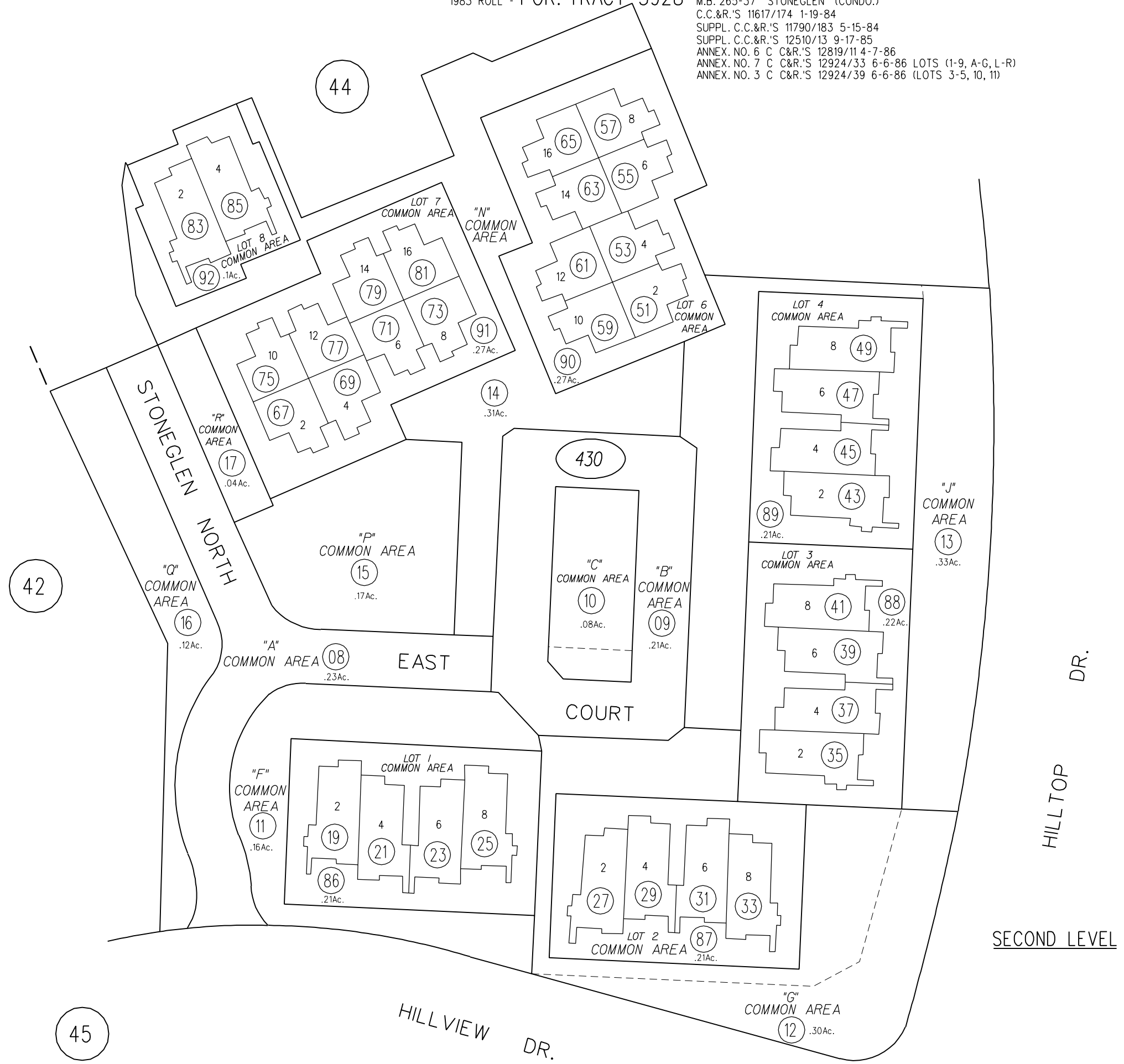


M.B. 265-37 "STONEGLEN" (CONDO.)  
C.C.&R.'S 11617/174 1-19-84  
SUPPL. C.C.&R.'S 11790/183 5-15-84  
SUPPL. C.C.&R.'S 12510/13 9-17-85  
ANNEX. NO. 6 C C&R.'S 12819/114 4-7-86  
ANNEX. NO. 7 C C&R.'S 12924/33 6-6-86 LOTS (1-9, A-G, L-R)  
ANNEX. NO. 3 C C&R.'S 12924/39 6-6-86 (LOTS 3-5, 10, 11)



42

44

37

430

45