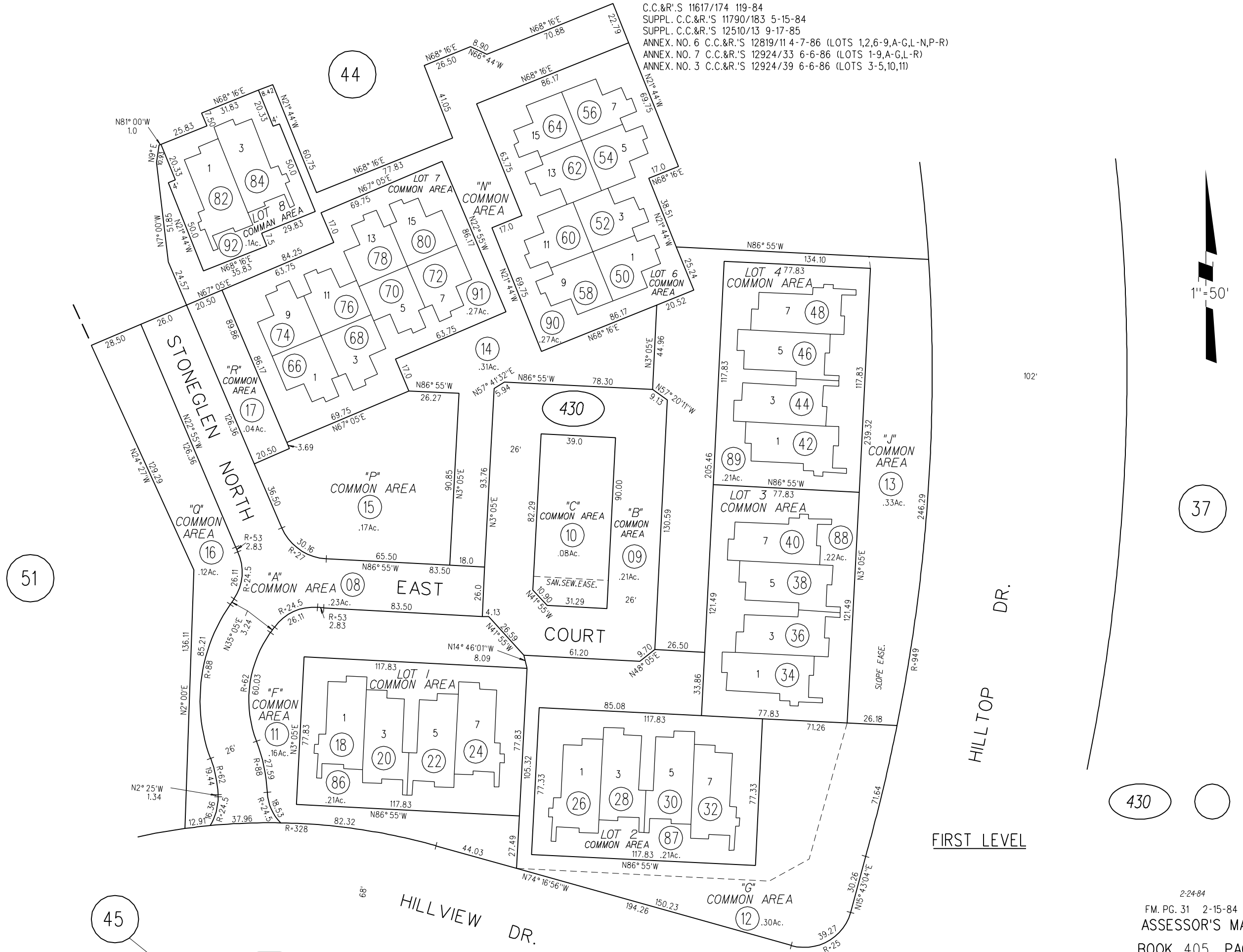


C.C.&R.'S 11617/174 119-84
SUPPL. C.C.&R.'S 11790/183 5-15-84
SUPPL. C.C.&R.'S 12510/13 9-17-85
ANNEX. NO. 6 C.C.&R.'S 12819/11 4-7-86 (LOTS 1,2,6-9,A-G,L-N,P-R)
ANNEX. NO. 7 C.C.&R.'S 12924/33 6-6-86 (LOTS 1-9,A-G,L-R)
ANNEX. NO. 3 C.C.&R.'S 12924/39 6-6-86 (LOTS 3-5,10,11)



1" = 50'

37

430

45